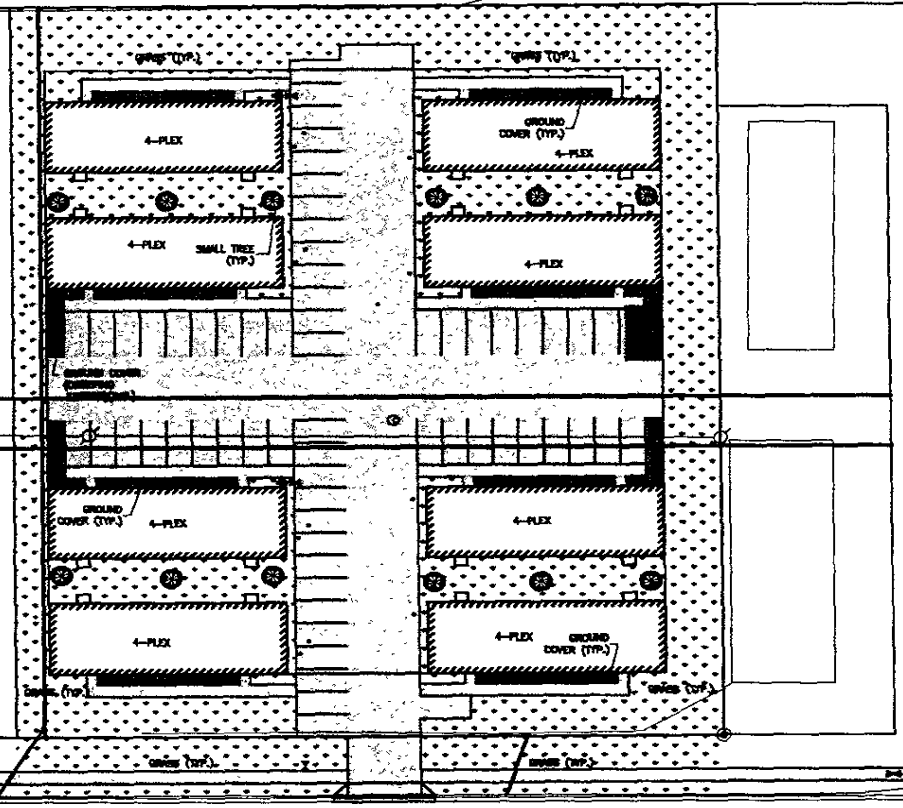



04RZ062

Lot Area = 72,718 sq. ft.  
 Blk Area = 2381 X 8 = 19,808 sq. ft.  
 Pallets Required = 53,908  
 Pallets Provided  
 Gravel = 3272 sq. yd. @ 10 pt./sq. yd. = 32,720 pt.  
 Ground Cover (Draping Juniper) = 283 sq. yd. @ 100 pts./sq. yd. = 28,300 pt.  
 Small Trees (Palmetto Ash) = 12 trees @ 800 pt./tree = 9,600 pt.  
 Total Pallets Provided = 65,020 pt.



EAST WATERTOWN STREET

NORTH  
 SCALE: 1" = 30'  




TSP Three, Inc.  
 400 Kansas City Street  
 Rapid City, SD 57701  
 phone: (605) 343-8102  
 fax: (605) 343-7189  
 www.tspinc.com

Architecture  
 Engineering  
 Construction

EAST WATERTOWN  
 STREET 4-PLEXES  
 RAPID CITY, SD

PREPARED BY: [Signature]  
 CHECKED BY: [Signature]  
 DATE: [Date]

SITE LANDSCAPE  
 PLAN

C-105

PRELIMINARY-NOT FOR CONSTRUCTION