

04RZ060

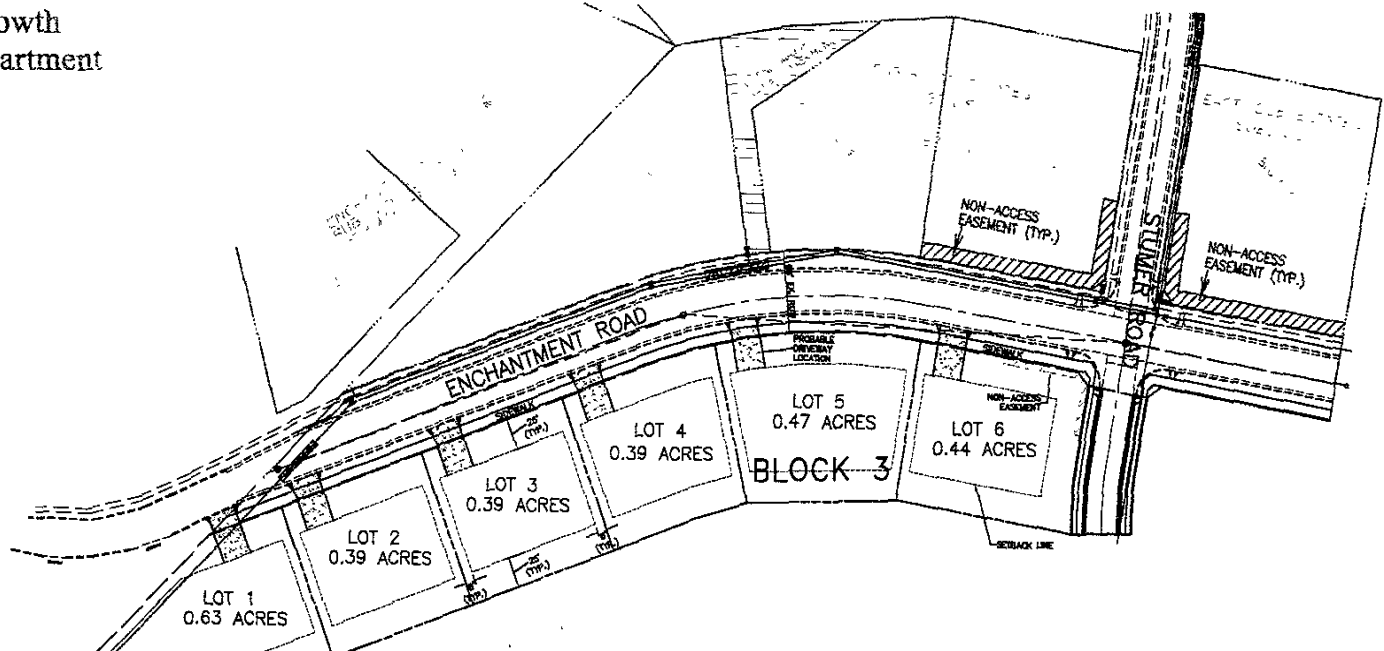
RECEIVED

DEC 10 2004

Rapid City Growth
Management Department

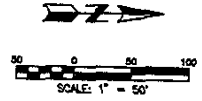
PLANNED RESIDENTIAL DEVELOPMENT EASTRIDGE ESTATES SUBDIVISION

LOTS 1-6, BLOCK 3
LOCATED IN THE NW1/4NE1/4, SECTION 24, T1N, R7E, B.H.M.,
CITY OF RAPID CITY, PENNINGTON COUNTY, SOUTH DAKOTA



BUILDING SETBACKS
 FRONT SETBACK - 25.0'
 CORNER SETBACK - 25.0'
 REAR SETBACK - 25.0'
 SIDE SETBACK - 5.0'

SITE DATA
 TOTAL AREA - 2.85 ACRES
 LOTS - 6
 DENSITY - 2.1 DWELLING UNIT PER ACRE
 BUILDING FOOTPRINT NOT TO EXCEED 30% OF TOTAL LOT AREA
 APPROVED FUTURE LAND USE 0.7 DWELLING UNIT PER ACRE



D.D.I.
DREAM DESIGN INTERNATIONAL, INC.
 PROFESSIONAL STRUCTURAL & CIVIL ENGINEERING CONSULTANTS
 606 KANSAS CITY BL., SUITE 4, RAPID CITY, SD 57701
 PH. 605-342-0288 FAX 605-342-0248 EMAIL: eng@dreamdesigninc.com