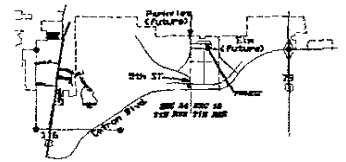


04PL184

Notes:
 Use 2004 City of Rapid City Standard Specifications & Details unless otherwise noted.
 6" PVC Sewer Typ.
 8", 12" PVC Water Typ. (6" in cul-de-sac w/ city approval)
 Palo Verde Elev. 3846
 Std. C&G, 4 ft prop line sidewalk, ROW and pavement within city stream.
 LDR 2 with mix of single family and townhome lots (> 17,000 +/-)



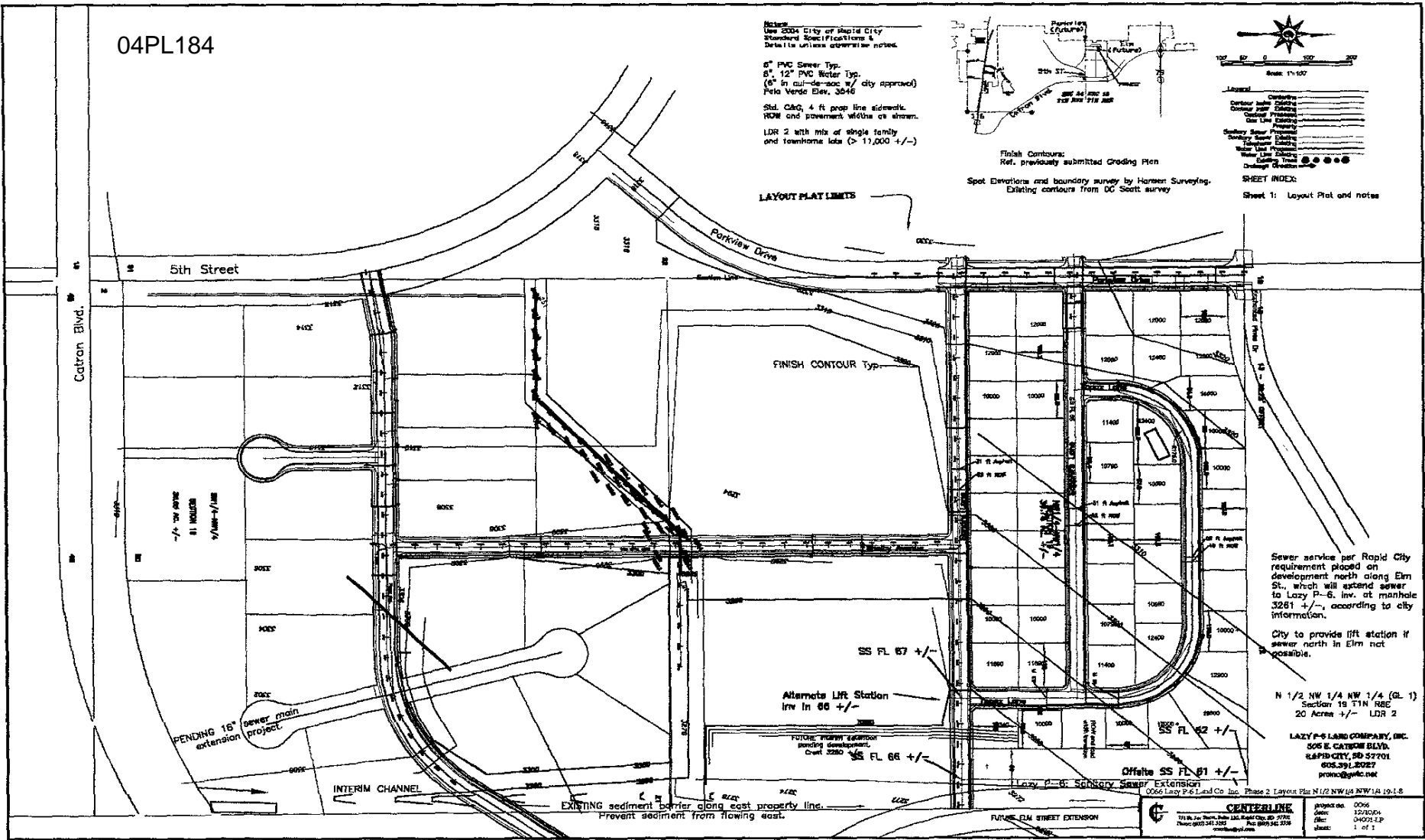
Legend:

Contour	Existing
Contour	Proposed
Centerline	Proposed
Sanitary Sewer	Proposed
Water Main	Proposed
Water Line	Proposed
Electric	Proposed
Drainage	Proposed

Finish Contours:
 Ref. previously submitted Grading Plan
 Spot Elevations and boundary survey by Hansen Surveying, Existing contours from DC Sertt survey

SHEET INDEX:
 Sheet 1: Layout Plat and notes

LAYOUT PLAT LIMITS



Sewer service per Rapid City requirement placed on development north along Elm St., which will extend sewer to Lazy P-6. Inv. at manhole 3281 +/-, according to city information.

City to provide lift station if sewer north in Elm not possible.

N 1/2 NW 1/4 NW 1/4 (G.L. 1)
 Section 19 T1N R6E
 20 Acres +/- LDR 2

LAZY P-6 LAND COMPANY, INC.
 506 E. CATRON BLVD.
 S.F. 570-222, 50 S.F. 7701
 505.391.8227
 pronoy@lpc.net

PENDING 18" sewer main project extension

SS FL 67 +/-
 Alternate LIR Station
 Inv In 66 +/-

SS FL 66 +/-
 FUTURE: interim station pending development. Elev 3280

Offsite SS FL 61 +/-
 Lazy P-6 Sanitary Sewer Extension

EXISTING sediment barrier along east property line. Prevent sediment from flowing east.

0266 Lazy P-6 Land Co. Inc. Phase 2 Layout Plat N 1/2 NW 1/4 NW 1/4 sp. 1-8

CENTERLINE
 710 S.W. 2nd Street, Suite 100, Portland, OR 97204
 Phone: (503) 241-3333 Fax: (503) 241-3336
 www.centerline.com

project no. 0266
 date: 12/10/04
 file: 040212.P
 sheet: 1 of 3