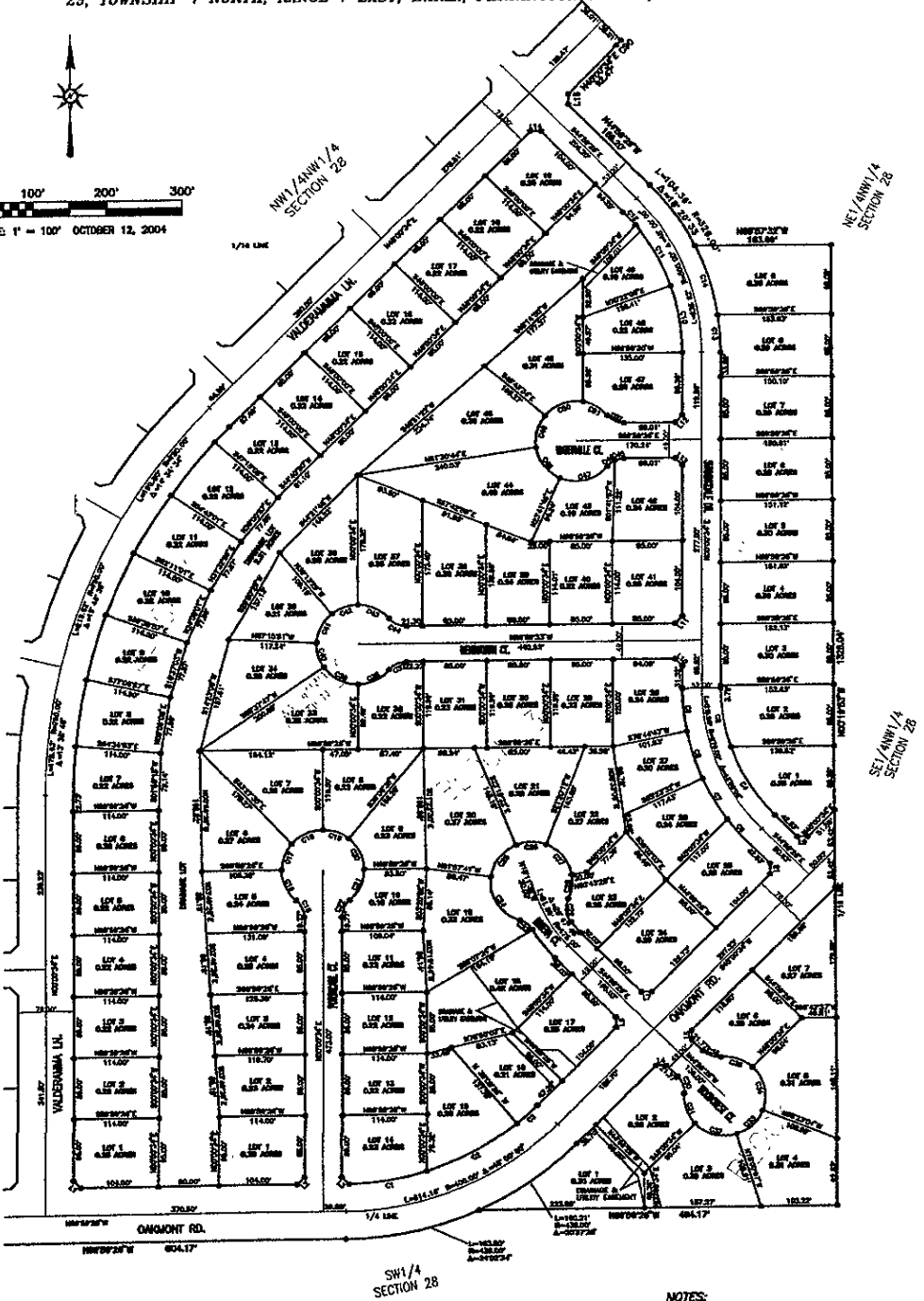
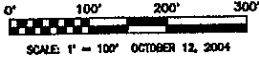


PLAT OF REDROCK MEADOWS (PHASE 1)

LOTS 1-7, BLOCK 1; LOTS 1-9, BLOCK 2; LOTS 1-49, BLOCK 3; LOTS 1-19, BLOCK 4; LOTS 1-31, BLOCK 5; LOTS 1-2, BLOCK 6; LOTS 1-2, BLOCK 7; LOT1, BLOCK 8; DEDICATED STREETS AND DRAINAGE LOT LOCATED IN THE NW1/4 NW1/4, SW1/4 NW1/4 AND NE1/4 SW1/4 OF SECTION 28 AND THE NE1/4 SE1/4, SE1/4 NW1/4 OF SECTION 29, TOWNSHIP 1 NORTH, RANGE 7 EAST, B.H.M., PENNINGTON COUNTY, SOUTH DAKOTA



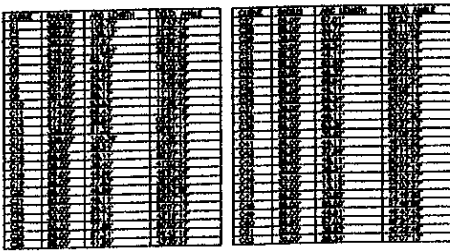
NOTES:

1. MAJOR DRAINAGE AND UTILITY EASEMENTS ARE HEREBY ESTABLISHED BY WIDE ON THE INTERIOR SIDE OF ALL LOT LINES AND RIGHT-OF-WAY. (EXCEPT WHERE MAJOR DRAINAGE EASEMENTS ARE LOCATED)
2. TOTAL PLATED AREA: 48.81 ACRES; LOTS: 32.90 ACRES; DEDICATED PUBLIC RIGHT-OF-WAY: 11.6 ACRES; DRAINAGE LOT: 2.31 ACRES.
3. ANY MAJOR DRAINAGE EASEMENT SHOWN HEREON SHALL BE KEPT FREE OF ALL OBSTRUCTIONS INCLUDING BUT NOT LIMITED TO BUILDINGS, WALLS, FENCES, HEDGES, TREES, AND SHRUBS. THESE EASEMENTS GRANT TO ALL PUBLIC AUTHORITIES THE RIGHT TO CONSTRUCT, OPERATE, MAINTAIN, INSPECT AND REPAIR SUCH IMPROVEMENTS AND STRUCTURES AS IT DEEMS EXPEDIENT TO FACILITATE DRAINAGE FROM ANY SOURCE.
4. NON-ACCESS EASEMENTS ARE HEREBY ESTABLISHED ALONG THE FIRST FIFTY FEET OF CORNER LOTS OR AS INDICATED HEREON.

LEGEND

- BOUNDS SET 5/8" NEAR 1974 SURVEY CAP MARKED "RESURV"
- BOUNDS FOUND SURVEY MONUMENT

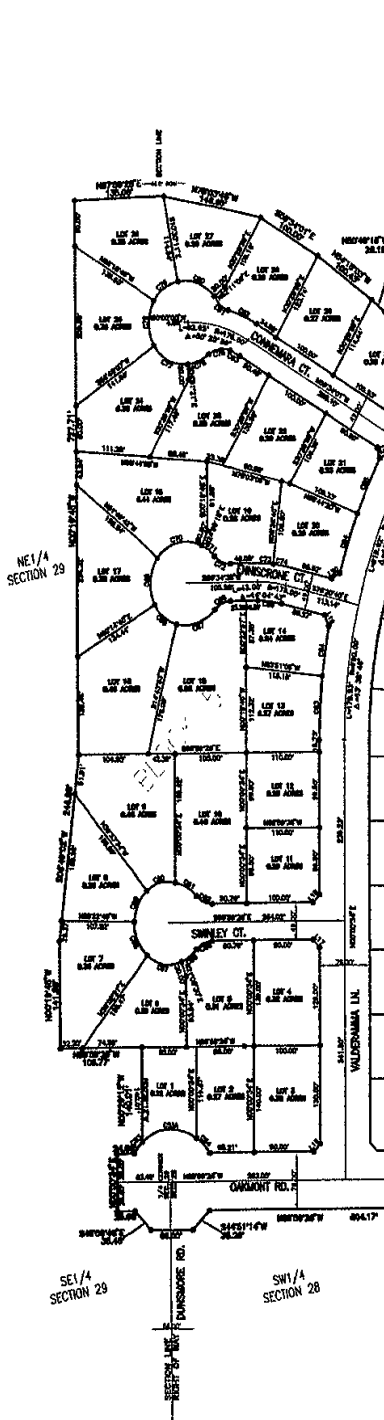
LOT NO.	ACRES	AREA	PERCENT
1	0.25	0.25	0.51
2	0.25	0.25	0.51
3	0.25	0.25	0.51
4	0.25	0.25	0.51
5	0.25	0.25	0.51
6	0.25	0.25	0.51
7	0.25	0.25	0.51
8	0.25	0.25	0.51
9	0.25	0.25	0.51
10	0.25	0.25	0.51
11	0.25	0.25	0.51
12	0.25	0.25	0.51
13	0.25	0.25	0.51
14	0.25	0.25	0.51
15	0.25	0.25	0.51
16	0.25	0.25	0.51
17	0.25	0.25	0.51
18	0.25	0.25	0.51
19	0.25	0.25	0.51
20	0.25	0.25	0.51
21	0.25	0.25	0.51
22	0.25	0.25	0.51
23	0.25	0.25	0.51
24	0.25	0.25	0.51
25	0.25	0.25	0.51
26	0.25	0.25	0.51
27	0.25	0.25	0.51
28	0.25	0.25	0.51
29	0.25	0.25	0.51
30	0.25	0.25	0.51
31	0.25	0.25	0.51
32	0.25	0.25	0.51
33	0.25	0.25	0.51
34	0.25	0.25	0.51
35	0.25	0.25	0.51
36	0.25	0.25	0.51
37	0.25	0.25	0.51
38	0.25	0.25	0.51
39	0.25	0.25	0.51
40	0.25	0.25	0.51
41	0.25	0.25	0.51
42	0.25	0.25	0.51
43	0.25	0.25	0.51
44	0.25	0.25	0.51
45	0.25	0.25	0.51
46	0.25	0.25	0.51
47	0.25	0.25	0.51
48	0.25	0.25	0.51
49	0.25	0.25	0.51
50	0.25	0.25	0.51
51	0.25	0.25	0.51
52	0.25	0.25	0.51
53	0.25	0.25	0.51
54	0.25	0.25	0.51
55	0.25	0.25	0.51
56	0.25	0.25	0.51
57	0.25	0.25	0.51
58	0.25	0.25	0.51
59	0.25	0.25	0.51
60	0.25	0.25	0.51
61	0.25	0.25	0.51
62	0.25	0.25	0.51
63	0.25	0.25	0.51
64	0.25	0.25	0.51
65	0.25	0.25	0.51
66	0.25	0.25	0.51
67	0.25	0.25	0.51
68	0.25	0.25	0.51
69	0.25	0.25	0.51
70	0.25	0.25	0.51
71	0.25	0.25	0.51
72	0.25	0.25	0.51
73	0.25	0.25	0.51
74	0.25	0.25	0.51
75	0.25	0.25	0.51
76	0.25	0.25	0.51
77	0.25	0.25	0.51
78	0.25	0.25	0.51
79	0.25	0.25	0.51
80	0.25	0.25	0.51
81	0.25	0.25	0.51
82	0.25	0.25	0.51
83	0.25	0.25	0.51
84	0.25	0.25	0.51
85	0.25	0.25	0.51
86	0.25	0.25	0.51
87	0.25	0.25	0.51
88	0.25	0.25	0.51
89	0.25	0.25	0.51
90	0.25	0.25	0.51
91	0.25	0.25	0.51
92	0.25	0.25	0.51
93	0.25	0.25	0.51
94	0.25	0.25	0.51
95	0.25	0.25	0.51
96	0.25	0.25	0.51
97	0.25	0.25	0.51
98	0.25	0.25	0.51
99	0.25	0.25	0.51
100	0.25	0.25	0.51



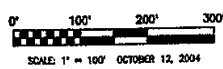
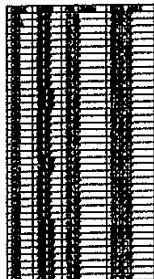
PLAT OF REDROCK MEADOWS (PHASE I)

04PL165

LOTS 1-7, BLOCK 1; LOTS 1-9, BLOCK 2; LOTS 1-49, BLOCK 3; LOTS 1-19, BLOCK 4;
 LOTS 1-31, BLOCK 5; LOTS 1-2, BLOCK 6; LOTS 1-2, BLOCK 7; LOT 1, BLOCK 8;
 DEDICATED STREETS AND DRAINAGE LOT LOCATED IN THE NW1/4 NW1/4, SW1/4 NW1/4
 AND NE1/4 SW1/4 OF SECTION 28 AND THE NE1/4 SE1/4, SE1/4 NW1/4 OF SECTION
 29, TOWNSHIP 1 NORTH, RANGE 7 EAST, B.H.M., PENNINGTON COUNTY, SOUTH DAKOTA



NW1/4 NW1/4 SECTION 28
 SW1/4 NW1/4 SECTION 28



SCALE: 1" = 100' OCTOBER 12, 2004

LEGEND

- DENOTES SET 5/8" REBAR WITH SURVEY CAP MARKED "RLS397"
- DENOTES FOUND SURVEY MONUMENT

NOTES:

1. MINOR DRAINAGE AND UTILITY EASEMENTS ARE HEREBY ESTABLISHED 6" WIDE ON THE INTERIOR SIDE OF ALL LOT LINES AND RIGHT-OF-WAY, (EXCEPT WHERE MAJOR DRAINAGE EASEMENTS ARE LOCATED)
2. TOTAL PLATTED AREA: 46.81 ACRES; LOTS: 32.90 ACRES; DEDICATED PUBLIC RIGHT-OF-WAY: 11.6 ACRES; DRAINAGE LOT: 2.31 ACRES.
3. ANY MAJOR DRAINAGE EASEMENT SHOWN HEREON SHALL BE KEPT FREE OF ALL OBSTRUCTIONS INCLUDING BUT NOT LIMITED TO BUILDINGS, WALLS, FENCES, HEDGES, TREES, AND SHRUBS. THESE EASEMENTS GRANT TO ALL PUBLIC AUTHORITIES THE RIGHT TO CONSTRUCT, OPERATE, MAINTAIN, INSPECT AND REPAIR SUCH IMPROVEMENTS AND STRUCTURES AS IT DEEMS EXPEDIENT TO FACILITATE DRAINAGE FROM ANY SOURCE.
4. NON-ACCESS EASEMENTS ARE HEREBY ESTABLISHED ALONG THE FIRST FIFTY FEET OF CORNER LOTS OR AS INDICATED HEREON.