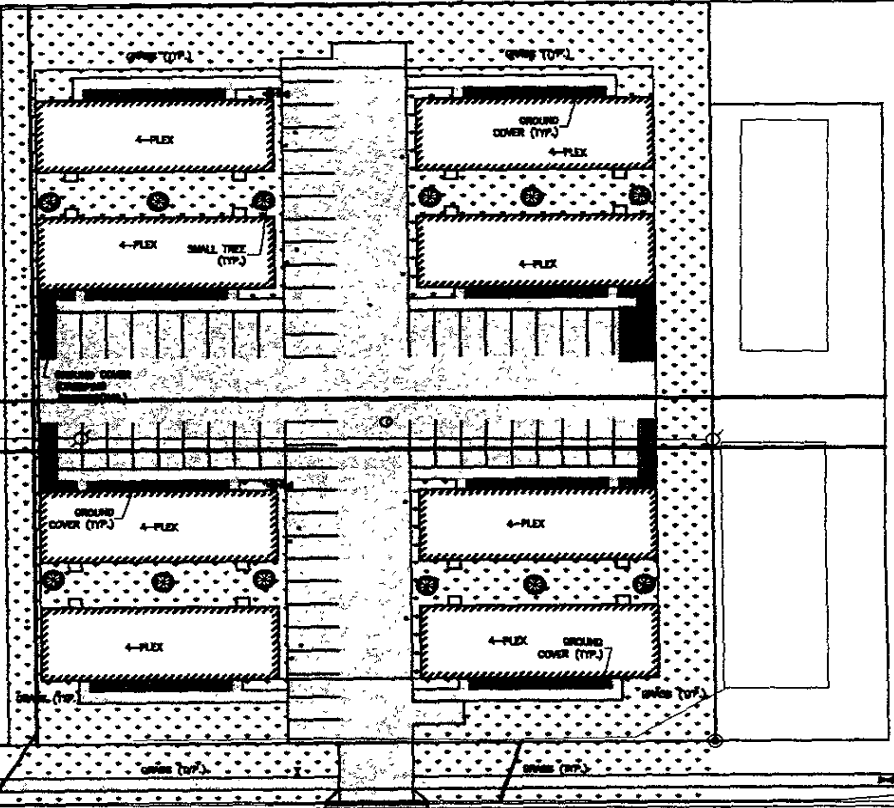


04CA066

Lot area	=	72,719 s.f.
Reg. Area = 2351 X 8	=	18,808 s.f.
Pellets Required	=	83,008
Pellets Provided		
Grass = 3272 sq. yd.	=	33,720 sq. yd.
@ 10 pt./sq. yd.		
Ground Cover (Crawling Juniper)		
= 263 sq. yd. @ 100 pt./sq. yd.	=	26,300 pt.
Small Trees (Palmers Ash)	=	6000 pt.
= 12 trees @ 500 pt./tree.		
Total Pellets Provided	=	65,020 pt.



EAST WATERTOWN STREET

SCALE 1" = 30'

TSP
Divide to Unite Together
 TSP, Inc.
 600 Kansas City Street
 Rapid City, SD 57701
 phone: (605) 343-6102
 fax: (605) 343-7188
 www.tspinc.com
 Architecture
 Engineering
 Construction

EAST WATERTOWN STREET 4-PLEXES
 RAPID CITY, SD

SITE LANDSCAPE PLAN

C-105