

PLAT OF
**LOTS 15 THRU 17 OF BLOCK 1, LOTS 7 THRU 19 OF BLOCK 2,
 AND LOT 2 THRU 6 OF BLOCK 3,**
KENNSINGTON HEIGHTS SUBDIVISION
 (formerly a portion of Lot B of "Government" Lot 4)

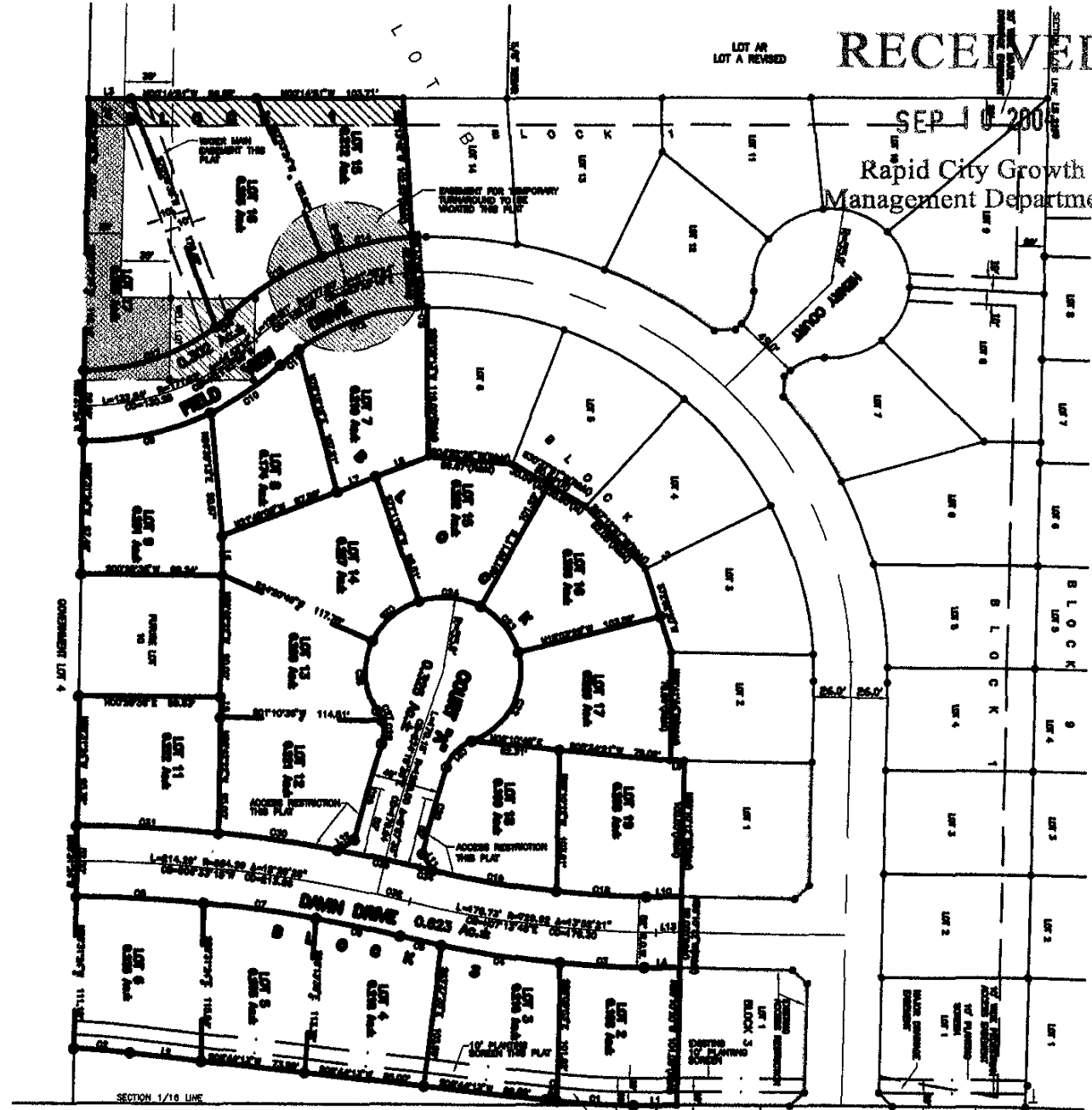
04PL129

LOCATED IN "GOVERNMENT" LOT 4
 SECTION 18, T1N, R8E, BHM,
 RAPID CITY, PENNINGTON COUNTY, SOUTH DAKOTA

RECEIVED

SEP 10 2004

Rapid City Growth
 Management Department



SEPTMBER 10, 2004
 N.T.S.

TRACT B OF PARCEL C
 MK SUBDIVISION

UTILITY EASEMENTS AS
 SHOWN IN PLAT BOOK
 27 PAGE 74

BY YOUR
 UTILITY EASEMENT

BALANCE OF TRACT A
 OF PARCEL C
 MK SUBDIVISION