

**RECEIVED**  
 OCT 19 2004  
 Rapid City Growth Management Department

**ELECTRICAL REQUIREMENTS**

1. MENARD INC. TO SUPPLY ALL LIGHTING FIXTURES AND POLES
2. CONTRACTOR TO SUPPLY NECESSARY PHOTOCELLS IN ALL AREAS (APPROVED BY MENARD INC.)
3. ALL EXTERIOR UNDERGROUND WIRING SHALL BE IN PVC CONDUIT OR AS ALLOWED BY CODE OR AS NOTED AND ALL CONDUIT TO BE BURIED A MINIMUM OF 18" IN PIVE CONDUIT OR AS ALLOWED BY CODE OR AS NOTED
4. SEE SPECIFICATIONS FOR ADDITIONAL ELECTRICAL REQUIREMENTS
5. ELECTRICAL CONTRACTOR TO SUPPLY AND INSTALL (1) ALL GROUND WIRE CONNECTED TO THE POWER MULTI GROUNDERS NEARBY TO GROUND THE BUILDING FACILITIES PER ALL CITY SPECIFICATIONS
6. CONTRACTOR NOT TO LAY ELECTRICAL CONDUIT OVER A UTILITY LINE (E.G. STORM WATER DRAINAGE) UNLESS A MINIMUM OF 8" IS MAINTAINED
7. CONTRACTOR TO RUN WIRING SUPPLY AND TERMINATE CONTACTS AND ZONE EXPANSION AND PANELS AS NEEDED
8. ALL WAREHOUSE ROOFER MAIN DOORS ALL GATES SPRINKLER SYSTEM FLOWERS FLOWERS LOW AIR AND LOW TEMPERATURE SENSORS TIED INTO EX STING STORE SECURITY SYSTEM AND MAKE FULLY OPERATIONAL
9. SECURITY FOR ELECTRICAL LOADS OF WAREHOUSE CENTER SHIPPING AREA
10. CONTRACTOR TO SUPPLY AND INSTALL ALL GATES AND LOCKS AND MAKE UP TO THE STORES SECURITY PANEL FOR A COMPLETE OPERATIONAL SYSTEM
11. ELECTRICAL AND SECURITY CONDUIT FOR THE NEW WAREHOUSE SHIPPING AREA IS TO BE RUN AT THE ROOF LEVEL AND INSURE THE WIRING TO THE EXISTING ELECTRICAL ROOM AND CONDUIT MAKE THE WIRING WHITE IN THE EXISTING WAREHOUSE
12. CONTRACTOR TO RELOCATE EXISTING LIGHTING TO 30' POLES (400 WATT MAX) WITH PHOTOCELLS ON THIS SITE
13. CONTRACTOR TO RELOCATE EXISTING LIGHTING TO 30' POLES (400 WATT MAX) WITH PHOTOCELLS ON THIS SITE
14. CONTRACTOR TO RELOCATE EXISTING LIGHTING TO 30' POLES (400 WATT MAX) WITH PHOTOCELLS ON THIS SITE
15. CONTRACTOR TO RELOCATE EXISTING LIGHTING TO 30' POLES (400 WATT MAX) WITH PHOTOCELLS ON THIS SITE
16. CONTRACTOR TO RELOCATE EXISTING LIGHTING TO 30' POLES (400 WATT MAX) WITH PHOTOCELLS ON THIS SITE

**GENERAL NOTES**

1. ALL STRUCTURES ARE TO FACE OF CURB OR CENTER OF PAINT STRIPE
2. CONTRACTOR TO FILL ALL UTILITY TRENCHES TO SUB GRADE WITH CLEAN SLOPE 42 GA PHONE ELECT ETC
3. CONTRACTOR WILL BE RESPONSIBLE FOR SOIL SETTLEMENT DUE TO UNDERGROUND CONNECTIONS
4. TEMPORARY CHAIN LINK FENCE PANELS 8' HIGH AND SECURITY CHAIN LINK FENCE 10' TALL APPLIED AND INSTALLED BY CONTRACTOR. PERMANENT 14' HIGH GREEN CHAIN LINK FENCE MATERIAL SUPPLIED BY MENARD INC. INSTALLED BY CONTRACTOR
5. CONTRACTOR WILL SUPPLY, INSTALL, AND MAINTAIN ALL SECURITY AND SPRINKLER MONITORING EQUIPMENT UP TO AUTHORIZATION TO BE PROVIDED BY MENARD PROJECT MANAGER
6. CONTRACTOR WILL BE RESPONSIBLE FOR ALL SECURITY AND SPRINKLER MONITORING EQUIPMENT UP TO AUTHORIZATION TO BE PROVIDED BY MENARD PROJECT MANAGER
7. CONTRACTOR WILL BE RESPONSIBLE FOR ALL SECURITY AND SPRINKLER MONITORING EQUIPMENT UP TO AUTHORIZATION TO BE PROVIDED BY MENARD PROJECT MANAGER
8. CONTRACTOR WILL BE RESPONSIBLE FOR ALL SECURITY AND SPRINKLER MONITORING EQUIPMENT UP TO AUTHORIZATION TO BE PROVIDED BY MENARD PROJECT MANAGER
9. CONTRACTOR WILL BE RESPONSIBLE FOR ALL SECURITY AND SPRINKLER MONITORING EQUIPMENT UP TO AUTHORIZATION TO BE PROVIDED BY MENARD PROJECT MANAGER
10. CONTRACTOR WILL BE RESPONSIBLE FOR ALL SECURITY AND SPRINKLER MONITORING EQUIPMENT UP TO AUTHORIZATION TO BE PROVIDED BY MENARD PROJECT MANAGER
11. CONTRACTOR WILL BE RESPONSIBLE FOR ALL SECURITY AND SPRINKLER MONITORING EQUIPMENT UP TO AUTHORIZATION TO BE PROVIDED BY MENARD PROJECT MANAGER
12. CONTRACTOR WILL BE RESPONSIBLE FOR ALL SECURITY AND SPRINKLER MONITORING EQUIPMENT UP TO AUTHORIZATION TO BE PROVIDED BY MENARD PROJECT MANAGER
13. CONTRACTOR WILL BE RESPONSIBLE FOR ALL SECURITY AND SPRINKLER MONITORING EQUIPMENT UP TO AUTHORIZATION TO BE PROVIDED BY MENARD PROJECT MANAGER
14. CONTRACTOR WILL BE RESPONSIBLE FOR ALL SECURITY AND SPRINKLER MONITORING EQUIPMENT UP TO AUTHORIZATION TO BE PROVIDED BY MENARD PROJECT MANAGER
15. CONTRACTOR WILL BE RESPONSIBLE FOR ALL SECURITY AND SPRINKLER MONITORING EQUIPMENT UP TO AUTHORIZATION TO BE PROVIDED BY MENARD PROJECT MANAGER
16. CONTRACTOR WILL BE RESPONSIBLE FOR ALL SECURITY AND SPRINKLER MONITORING EQUIPMENT UP TO AUTHORIZATION TO BE PROVIDED BY MENARD PROJECT MANAGER

**LEGEND**

—	1	EXIST 200V WPS COVERS WOOD WARD L.W. C.F. REMOVE AND SALVAGE FOR MENARD INC.
●	2	NEW 87V WPS DISCONNECT W/ LAMP ELECTRICAL TO VOLTAGE BOX FOR 120V LIGHT
⊗	3	NEW 200V WPS PULLING LOT LIGHTING ON 42' WHEEL MARCH (2x2x8)
□	4	EXIST 200V WPS WALL PLATE TO BE REMOVED AND RELOCATED FOR MENARD INC.
○	5	RELOCATED 200V WPS WALL PLATE MOUNTED ON 42' WHEEL MARCH
■	6	NEW 200 WATT 87V VOLT WALL PLATE MOUNTED ON 42' WHEEL MARCH

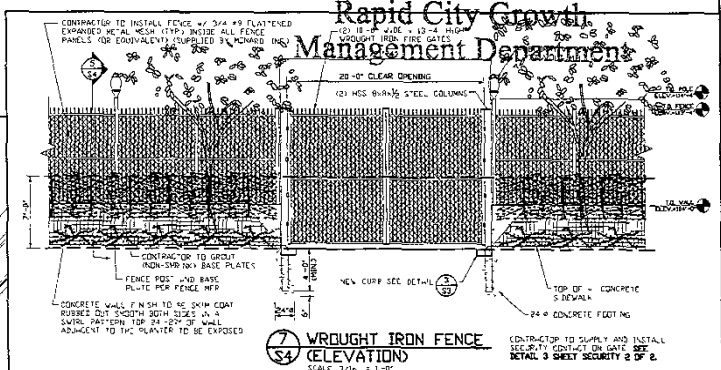
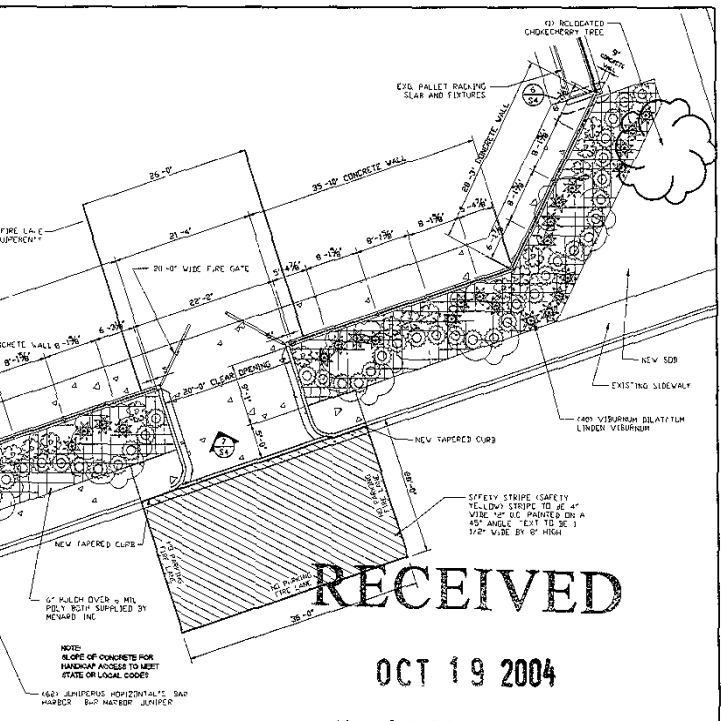
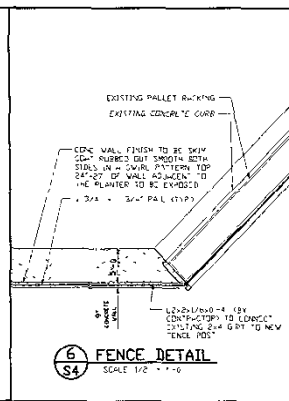
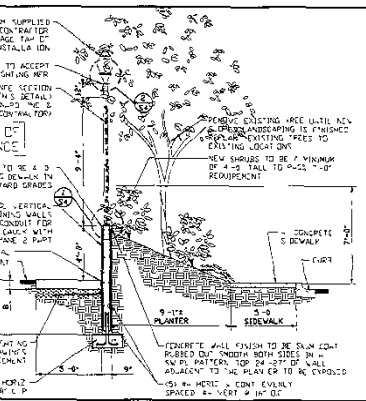
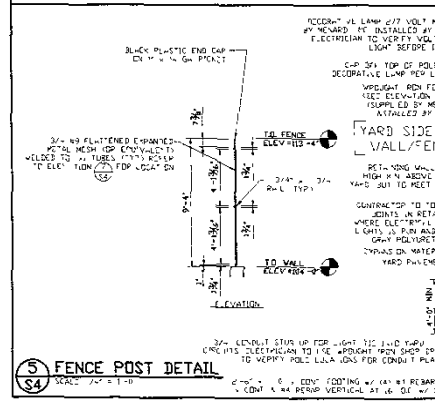
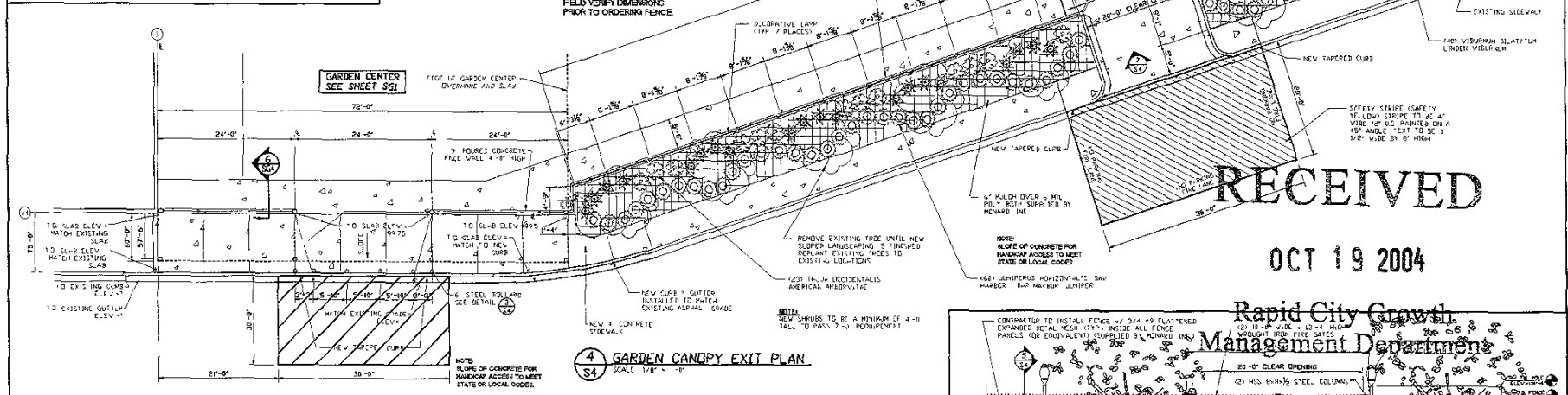
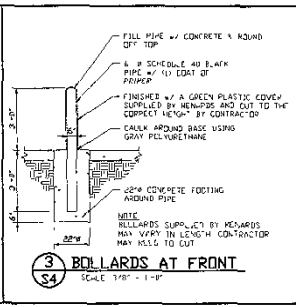
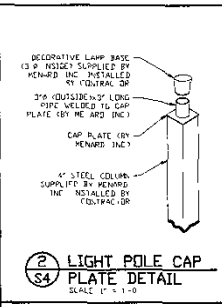
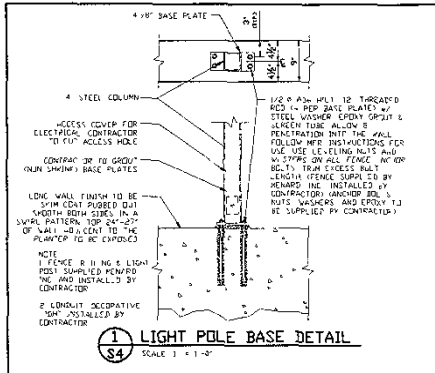
<b>MENARD INC.</b>		PROJECT TITLE	RAPID CITY, SD
STORE DESIGN DEPARTMENT		SHEET TITLE	UTILITY & ELECTRICAL
CAD CLAUDE WISCONSIN		DATE	08/01/04
SCALE		BY	08/01/04
DRAWN BY		DATE	08/01/04
CHECKED BY		DATE	08/01/04
APPROVED BY		DATE	08/01/04
DATE		DATE	DATE
DATE		DATE	DATE
DATE		DATE	DATE

**UTILITY & ELECTRICAL SITE PLAN**

1.0956± SQ FT  
 25.17± ACRES

1. ONCE THE EXISTING GAS METER HAS BEEN RELOCATED CONTRACTOR IS RESPONSIBLE TO PATCH ALL HOLES IN THE WALL USING ANY OTHER TYPE OF RESTORATION. SEE ITEM 16 ABOVE FOR MORE INFO ON RESTORATION CONTRACTOR TO PAINT GAS METER GRAY.

2. CONTRACTOR IS RESPONSIBLE TO COMPLETE ALL RESTORATION AND ANY WORK NOT PERFORMED BY UTILITY CONTRACTOR TO PAINT GAS METER GRAY WITH A FULLY COATED 1/2" G.P. SEWAGE.



RECEIVED  
OCT 19 2004

Rapid City Growth Management Department

<b>REWARD INC.</b>		PROJECT TITLE	
STORE DESIGN DEPARTMENT		RAPID CITY SD	
DAN CLARE WISCONSIN		SHEET TITLE	
SCALE DRAWN BY DATE		SITE DETAILS	
1/8" = 1'-0" JCW 10/8-24/04			
REVISIONS		HAS ONE MORE SHEET TO BE SUBMITTED	
NO DATE	DESCRIPTION	BY	CHECKED BY
1			
2			
3			