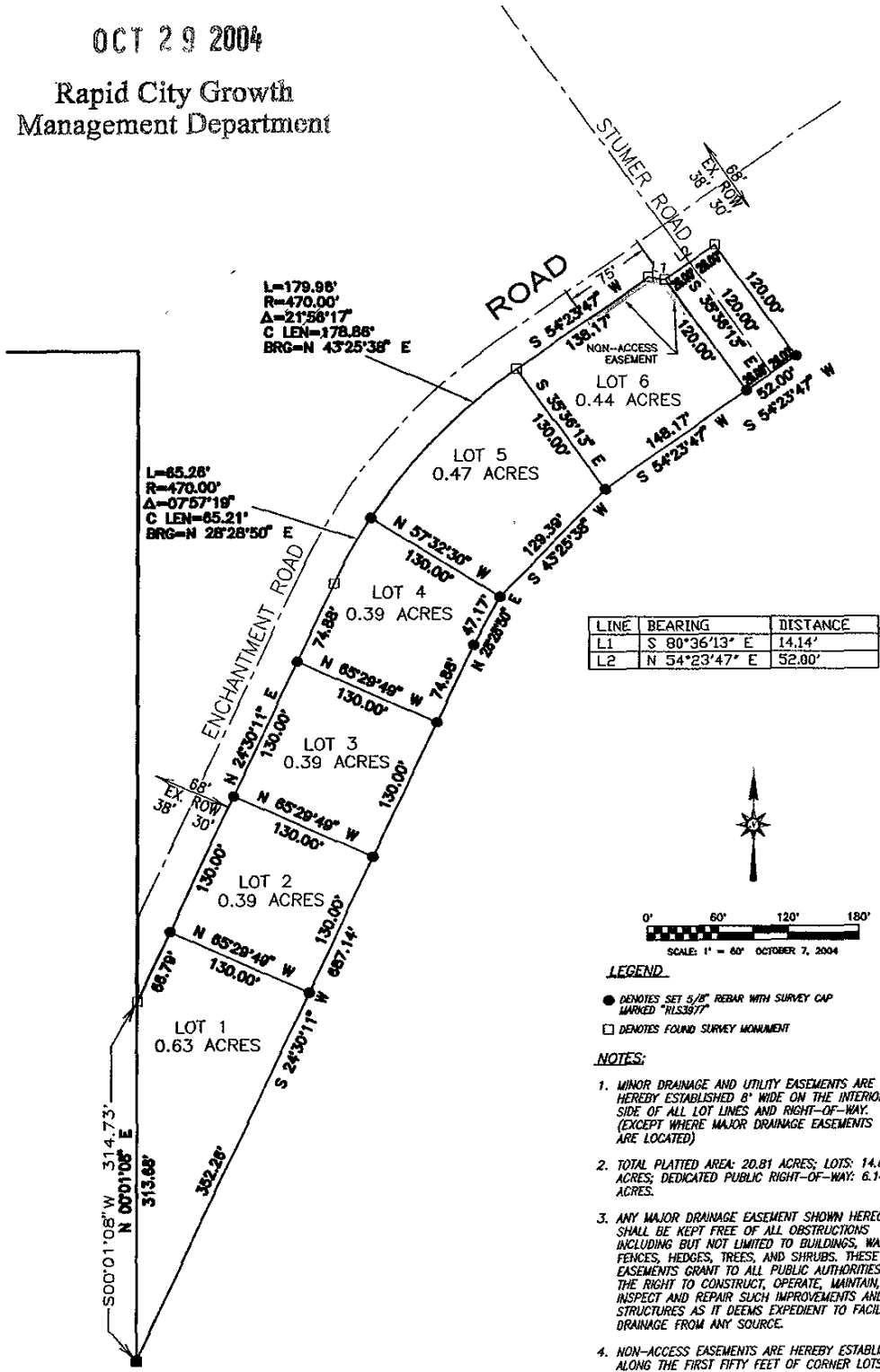


**PLAT OF EASTRIDGE SUBDIVISION**  
 LOTS 1-6, BLOCK 3; AND DEDICATED STREET  
 LOCATED IN THE NW 1/4, NE 1/4, SECTION 24, T11N, R7E, B.H.M.,  
 CITY OF RAPID CITY, PENNINGTON COUNTY, SOUTH DAKOTA

RECEIVED

OCT 29 2004

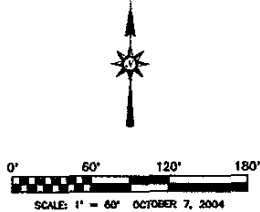
Rapid City Growth  
 Management Department



L=179.98'  
 R=470.00'  
 Δ=21°56'17"  
 C LEN=178.86'  
 BRG=N 43°25'38" E

L=65.28'  
 R=470.00'  
 Δ=07°57'19"  
 C LEN=65.21'  
 BRG=N 28°28'50" E

LINE	BEARING	DISTANCE
L1	S 80°36'13" E	14.14'
L2	N 54°23'47" E	52.00'



**LEGEND**

- DENOTES SET 5/8" REBAR WITH SURVEY CAP MARKED "R15397"
- DENOTES FOUND SURVEY MONUMENT

**NOTES:**

1. MINOR DRAINAGE AND UTILITY EASEMENTS ARE HEREBY ESTABLISHED 8" WIDE ON THE INTERIOR SIDE OF ALL LOT LINES AND RIGHT-OF-WAY, (EXCEPT WHERE MAJOR DRAINAGE EASEMENTS ARE LOCATED)
2. TOTAL PLATTED AREA: 20.81 ACRES; LOTS: 14.67 ACRES; DEDICATED PUBLIC RIGHT-OF-WAY: 6.14 ACRES.
3. ANY MAJOR DRAINAGE EASEMENT SHOWN HEREON SHALL BE KEPT FREE OF ALL OBSTRUCTIONS INCLUDING BUT NOT LIMITED TO BUILDINGS, WALLS, FENCES, HEDGES, TREES, AND SHRUBS. THESE EASEMENTS GRANT TO ALL PUBLIC AUTHORITIES THE RIGHT TO CONSTRUCT, OPERATE, MAINTAIN, INSPECT AND REPAIR SUCH IMPROVEMENTS AND STRUCTURES AS IT DEEMS EXPEDIENT TO FACILITATE DRAINAGE FROM ANY SOURCE.
4. NON-ACCESS EASEMENTS ARE HEREBY ESTABLISHED ALONG THE FIRST FIFTY FEET OF CORNER LOTS OR AS INDICATED HEREON.