

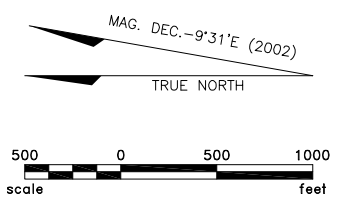
RUNWAY 14/32		RUNWAY DATA		RUNWAY 5/23	
EXISTING	FUTURE	ITEM	EXISTING	FUTURE	
C III	C IV	APPROACH CATEGORY & DESIGN GROUP	A I	A I	
8700'x150'	8700'x150'	RUNWAY DIMENSIONS (Length x Width)	3600'x75'	3600'x75'	
0.55977	0.55977	EFFECTIVE GRADIENT (%)	0.85556	0.85556	
140,000(SW) 190,000(DW) 300,000(TW)	140,000(SW) 190,000(DW) 300,000(TW)	PAVEMENT STRENGTH (lbs.)	12,500(SW)	12,500(SW)	
1 Mi./2400'(RVR)	2400'(RVR)/2400'(RVR)	APPROACH VISIBILITY MINIMUMS	VISUAL/VISUAL	VISUAL/VISUAL	
NONE	NONE	RUNWAY THRESHOLD DISPLACEMENT	NONE	NONE	
NONE	NONE	RUNWAY STOPWAY/CLEARWAY	NONE	NONE	
34:1/50:1	50:1/50:1	PART 77 APPROACH SURFACE (Slope)	20:1/20:1	20:1/20:1	
10,700'x500'	10,700'x500'	RUNWAY SAFETY AREA (Length x Width)	4080'x120'	4080'x120'	
10,700'x800'	10,700'x800'	RUNWAY OBJECT FREE AREA (Length x Width)	4080'x250'	4080'x250'	
9100'x400'	9100'x400'	OBSTACLE FREE ZONE (Length x Width)	4000'x250'	4000'x250'	
36'	36'	BRL (Building Height Assumption)	25'	25'	
NONE/50:1	50:1/50:1	OFZ INNER APPROACH SLOPE	NONE	NONE	
40'V-6:1to150'	40'V-6:1to150'	OFZ INNER TRANSITIONAL SLOPE	NA	NA	
HIRL, MITL	HIRL, MITL	RUNWAY & TAXIWAY LIGHTING	MIRL, MITL	MIRL, MITL	
REIL/MALSR	MALSR/MALSR	RUNWAY APPROACH LIGHTING	NONE/NONE	NONE/NONE	
NP/PRECISION	PRECISION/PRECISION	RUNWAY & TAXIWAY MARKING (Type)	VISUAL	VISUAL	
PCC-Grooved	PCC-Grooved	LANDING SURFACE (Type)	BIT.(PFC)	BIT.(PFC)	
REIL/MALSR PAPI(4)/PAPI(4) VORTAC/ILS: ILS GPS/VORTAC, NDB	REIL/MALSR PAPI(4)/PAPI(4) VORTAC/ILS: ILS GPS/VORTAC, NDB	NAVIGATION AIDS (Visual)	PAPI(4)/PAPI(4)	PAPI(4)/PAPI(4)	
		NAVIGATION AIDS (Electronic)	NONE	NONE	

SW = SINGLE WHEEL DW = DUAL WHEEL DTW = DUAL TANDEM WHEEL  
 LATITUDE & LONGITUDE - NAD 83  
 VERTICAL DATUM - NGVD 29

- MODIFICATIONS TO "FAA AIRPORT DESIGN STANDARDS"**
- (09/24/70) RUNWAY 14-32 CENTERLINE TAXIWAY SEPARATION DISTANCE
  - (11/23/70) OPERATIONAL RESTRICTION PROHIBITING SIMULTANEOUS USE OF RUNWAY 14-32 AND PARALLEL TAXIWAY BY LARGE AIRCRAFT
  - (09/15/83) ADJUSTMENT OF RUNWAY 14-32 CENTERLINE TO HOLDING DISTANCES
  - (10/22/03) CLARIFICATION OF RUNWAY 14-32 CENTERLINE TO HOLDING DISTANCES

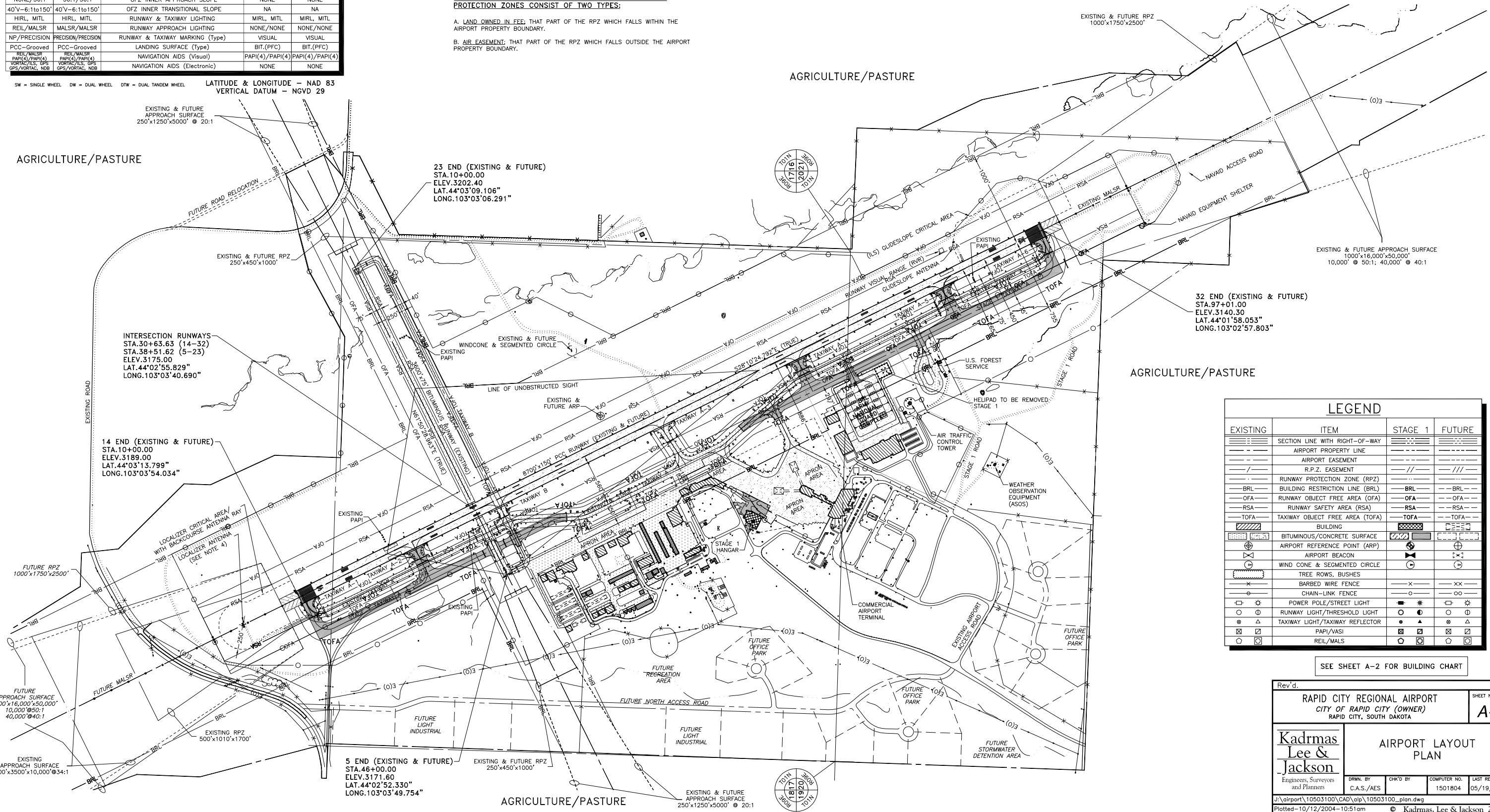
**AIRPORT OWNERSHIP OF EXISTING AND STAGE 1 RUNWAY PROTECTION ZONES CONSIST OF TWO TYPES:**

- A. LAND OWNED IN FEE; THAT PART OF THE RPZ WHICH FALLS WITHIN THE AIRPORT PROPERTY BOUNDARY.  
 B. AIR EASEMENT; THAT PART OF THE RPZ WHICH FALLS OUTSIDE THE AIRPORT PROPERTY BOUNDARY.



AIRPORT DATA		
EXISTING	ITEM	FUTURE
C III	SERVICE LEVEL	C IV
3202.40	AIRPORT ELEVATION	3202.40
44°02'43.183"	ARP-LATITUDE (NAD '83)	44°02'43.183"
103°03'26.531"	ARP-LONGITUDE (NAD '83)	103°03'26.531"
86.0°F	MEAN MAX. TEMP. - HOTTEST MONTH	86.0°F
ASOS	ON-SITE WEATHER INDICATION	ASOS
100LL/JET A	FUEL FACILITY	100LL/JET A
ILS/GPS/VORTAC/NDB	TERMINAL NAVIGATIONAL AIDS	ILS/GPS/VORTAC/NDB
Ø	OBSTRUCTIONS	Ø

SEE RUNWAY PROTECTION ZONE SHEETS FOR OBSTRUCTIONS.



LEGEND			
EXISTING	ITEM	STAGE 1	FUTURE
---	SECTION LINE WITH RIGHT-OF-WAY	---	---
---	AIRPORT PROPERTY LINE	---	---
---	AIRPORT EASEMENT	---	---
---	R.P.Z. EASEMENT	---	---
---	RUNWAY PROTECTION ZONE (RPZ)	---	---
---	BUILDING RESTRICTION LINE (BRL)	---	---
---	RUNWAY OBJECT FREE AREA (OFA)	---	---
---	RUNWAY SAFETY AREA (RSA)	---	---
---	TAXIWAY OBJECT FREE AREA (TOFA)	---	---
---	BUILDING	---	---
---	BITUMINOUS/CONCRETE SURFACE	---	---
---	AIRPORT REFERENCE POINT (ARP)	---	---
---	AIRPORT BEACON	---	---
---	WIND CONE & SEGMENTED CIRCLE	---	---
---	TREE ROWS, BUSHES	---	---
---	BARBED WIRE FENCE	---	---
---	CHAIN-LINK FENCE	---	---
---	POWER POLE/STREET LIGHT	---	---
---	RUNWAY LIGHT/THRESHOLD LIGHT	---	---
---	TAXIWAY LIGHT/TAXIWAY REFLECTOR	---	---
---	PAPI/VASI	---	---
---	REIL/MALS	---	---

SEE SHEET A-2 FOR BUILDING CHART

Rev'd.		RAPID CITY REGIONAL AIRPORT		SHEET NO.	
		CITY OF RAPID CITY (OWNER)		A-1	
		RAPID CITY, SOUTH DAKOTA			
Kadmas Lee & Jackson		AIRPORT LAYOUT PLAN			
Engineers, Surveyors and Planners		DRWN. BY	CHK'D BY	COMPUTER NO.	LAST REVISED
		C.A.S./AES		1501804	05/19/2004
J:\airport\10503100\CAD\alp\10503100_plan.dwg (ALP)					
Plotted - 10/12/2004 - 10:51am © Kadmas, Lee & Jackson 2004					