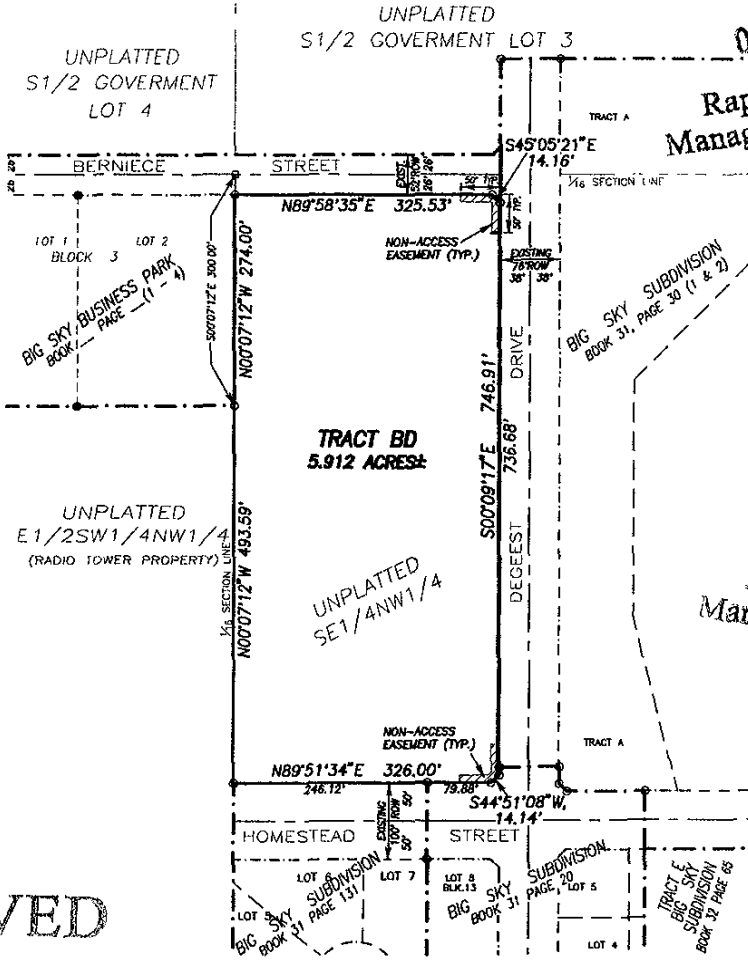


PART OF THE UNPLATTED PORTION OF THE SE1/4NW1/4 OF SECTION 3, T1N, R8E, B.H.M., RAPID CITY, PENNINGTON COUNTY, SOUTH DAKOTA

RECEIVED

OCT 15 2004

Rapid City Growth Management Department



OCT 29 2004

Rapid City Growth Management Department

RECEIVED

OCT 29 2004

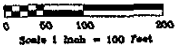
Rapid City Growth Management Department

LEGEND

- DENOTES SET 5/8" REBAR WITH SURVEY CAP MARKED "RLS 3977"
- DENOTES FOUND 5/8" REBAR WITH SURVEY CAP MARKED "RLS 3977"
- DENOTES FOUND SURVEY MONUMENT AS NOTED

NOTES:

1. MAJOR DRAINAGE AND UTILITY EASEMENTS ARE HEREBY ESTABLISHED 8' WIDE ON THE INTERIOR SIDE OF ALL LOT LINES AND RIGHT-OF-WAY. (EXCEPT WHERE MAJOR DRAINAGE EASEMENTS ARE LOCATED)
2. TOTAL PLATTED AREA: 5.912 ACRES
3. ANY MAJOR DRAINAGE EASEMENT SHOWN HEREON SHALL BE KEPT FREE OF ALL OBSTRUCTIONS INCLUDING BUT NOT LIMITED TO BUILDINGS, WALLS, FENCES, HEDGES, TREES, AND SHRUBS. THESE EASEMENTS GRANT TO ALL PUBLIC AUTHORITIES THE RIGHT TO CONSTRUCT, OPERATE, MAINTAIN, INSPECT AND REPAIR SUCH IMPROVEMENTS AND STRUCTURES AS IT DEEMS EXPEDIENT TO FACILITATE DRAINAGE FROM ANY SOURCE.
4. NON-ACCESS EASEMENTS ARE HEREBY ESTABLISHED ALONG THE FIRST FIFTY FEET OF CORNER LOTS OR AS INDICATED HEREON.



	<b>PREPARED BY:</b> ARLETH & ASSOCIATES	382 MAIN STREET DEADWOOD, SD 57732 605-578-1637	<b>JOB NO.</b> 04-0004	<b>DATE:</b> 09/30/04 <b>SCALE:</b> <b>DRAWN:</b> WRD	<b>APPROVED:</b> JMA <b>DWG:</b> HomeCerdPhS	PREPARED FOR: DREAM DESIGN INTERNATIONAL, INC 528 KANSAS CITY STREET, SUITE A RAPID CITY, SOUTH DAKOTA 57101 (605) 248-0538