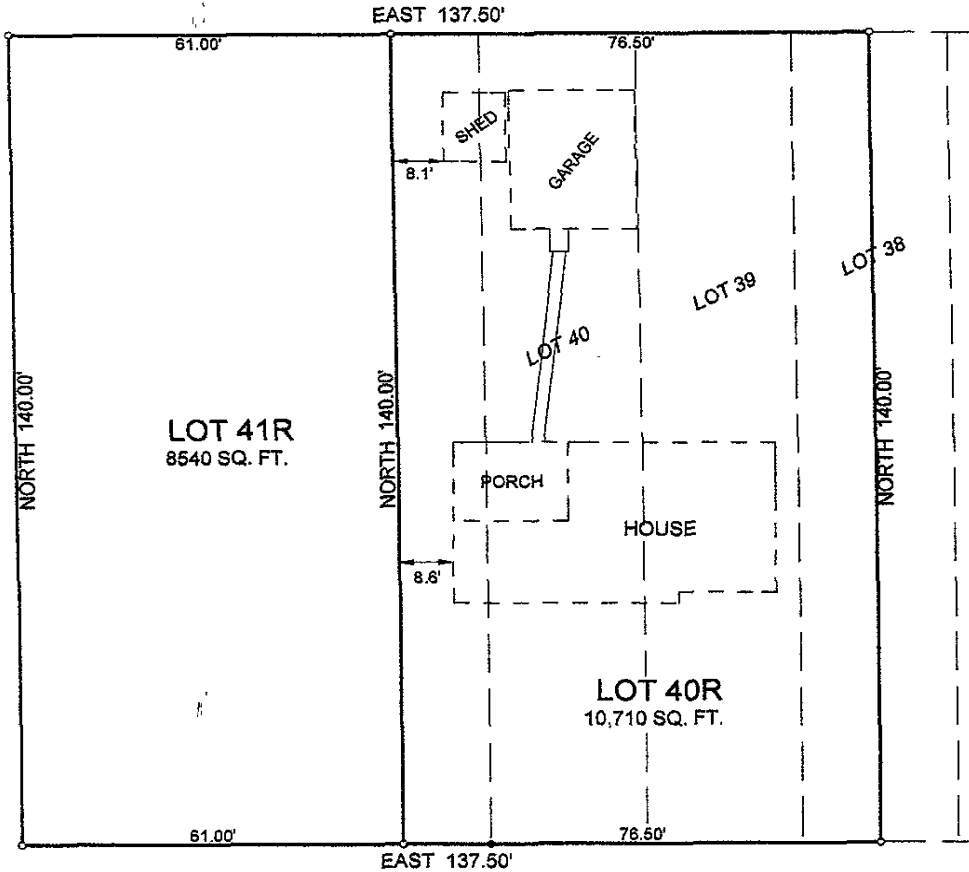


04SV065

20' ALLEY

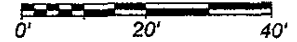


HALL STREET -- 60' R.O.W.

RECEIVED

OCT 25 2004

Rapid City Growth
Management Department



Prepared by:
Hanson Surveying & Mapping
832 Horace Mann Drive
Rapid City, SD 57701
605-388-9652

October 25, 2004

LAYOUT PLAT

LOTS 40R & 41R IN BLOCK 6 OF HALL S
(FORMERLY WEST HALF OF LOT 38, AN
39 THRU 41 IN BLOCK 6 OF HALL SUBD
LOCATED IN GOVT. LOT 3 OF SECTION
RAPID CITY, PENNINGTON COUNTY, SD