

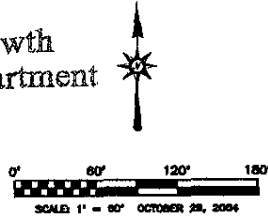
PLAT OF EASTRIDGE SUBDIVISION

LOTS 2A - 7A AND LOTS 1B TO 7B BLOCK 1, AND LOTS 1A TO 9A AND LOTS 1B - 9B BLOCK 2, FORMERLY A PORTION OF EASTRIDGE SUBDIVISION TRACT 1 AND OUTLOT A, AND PREVIOUSLY UNPLATTED LAND RESIDING IN W1/2NE1/4 AND E1/2NW1/4 SECTION 24, T1N, R8E, B.H.M. PENNINGTON COUNTY, RAPID CITY, SOUTH DAKOTA

RECEIVED

OCT 29 2004

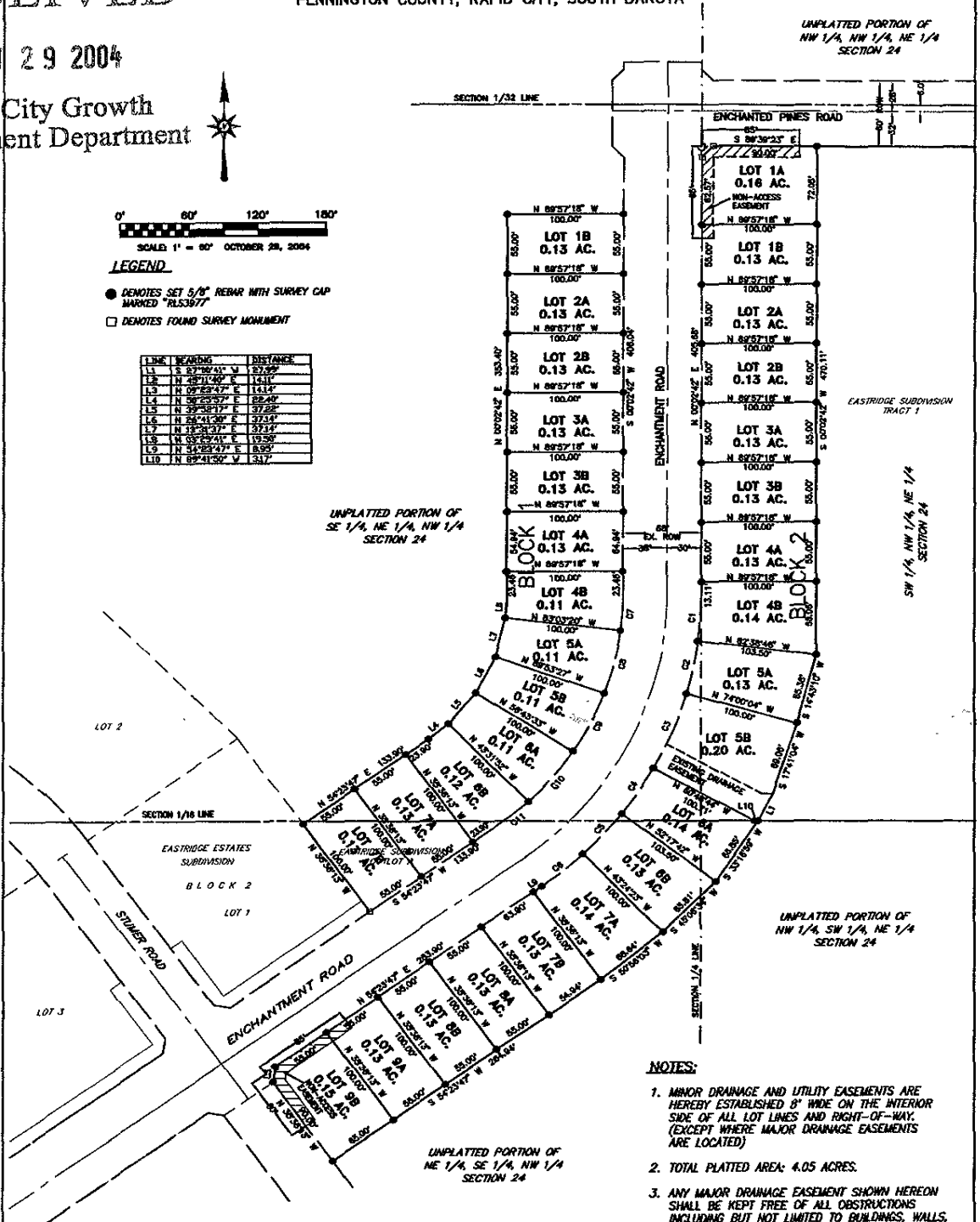
Rapid City Growth Management Department



LEGEND

- DENOTES SET 5/8" REBAR WITH SURVEY CAP MARKED "RL53977"
- DENOTES FOUND SURVEY MONUMENT

LINE	BEARING	DISTANCE
L1	S 87°30'41" W	212.55
L2	N 88°11'40" E	1431.7
L3	N 02°22'47" E	1434.5
L4	N 88°52'57" E	88.40
L5	N 88°51'18" E	37.58
L6	N 88°51'00" E	37.64
L7	N 88°51'18" E	37.24
L8	N 88°52'01" E	19.26
L9	N 88°52'47" E	8.95
L10	N 88°41'50" W	51.7



UNPLATTED PORTION OF SE 1/4, NE 1/4, NW 1/4 SECTION 24

UNPLATTED PORTION OF NW 1/4, NW 1/4, NE 1/4 SECTION 24

UNPLATTED PORTION OF NW 1/4, SW 1/4, NE 1/4 SECTION 24

UNPLATTED PORTION OF NE 1/4, SE 1/4, NW 1/4 SECTION 24

NOTES:

- MINOR DRAINAGE AND UTILITY EASEMENTS ARE HEREBY ESTABLISHED BY WIDE ON THE INTERIOR SIDE OF ALL LOT LINES AND RIGHT-OF-WAY, (EXCEPT WHERE MAJOR DRAINAGE EASEMENTS ARE LOCATED)
- TOTAL PLATTED AREA: 4.05 ACRES.
- ANY MAJOR DRAINAGE EASEMENT SHOWN HEREON SHALL BE KEPT FREE OF ALL OBSTRUCTIONS INCLUDING BUT NOT LIMITED TO BUILDINGS, WALLS, FENCES, HEDGES, TREES, AND SHRUBS. THESE EASEMENTS GRANT TO ALL PUBLIC AUTHORITIES THE RIGHT TO CONSTRUCT, OPERATE, MAINTAIN, INSPECT AND REPAIR SUCH IMPROVEMENTS AND STRUCTURES AS IT DEEMS EXPEDIENT TO FACILITATE DRAINAGE FROM ANY SOURCE.
- NON-ACCESS EASEMENTS ARE HEREBY ESTABLISHED ALONG THE FIRST FIFTY FEET OF CORNER LOTS OR AS INDICATED HEREON.

CURVE	RADIUS	DELTA ANGLE	ARC LENGTH	CHORD BEARING	CHORD LEN
C1	330.00	07°18'24"	41.86	N 03°49'24" E	41.86
C2	330.00	08°40'50"	50.00	N 11°30'10" E	48.92
C3	330.00	13°01'33"	75.02	N 22°30'20" E	74.88
C4	330.00	08°40'50"	50.00	N 33°12'33" E	48.92
C5	330.00	08°40'50"	50.00	N 42°06'43" E	48.92
C6	330.00	08°00'36"	44.14	N 50°23'24" E	44.10
C7	382.00	08°53'58"	31.45	N 03°28'41" E	31.52
C8	382.00	13°08'53"	60.20	N 13°51'37" E	60.07
C9	382.00	13°08'53"	60.20	N 26°43'00" E	60.07
C10	282.00	13°11'41"	60.24	N 38°52'19" E	60.07
C11	282.00	07°58'30"	34.22	N 50°28'57" E	34.22