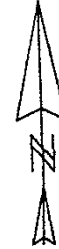


RECEIVED

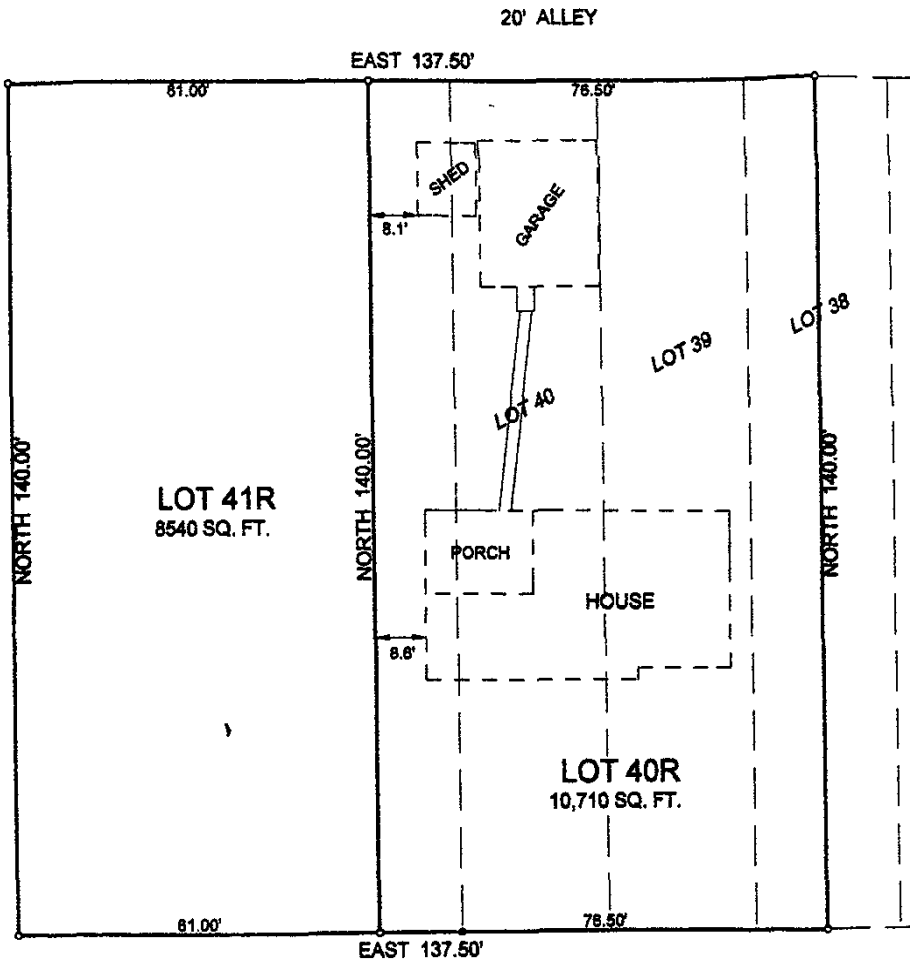
OCT 25 2004

Rapid City Growth  
Management Department



Prepared by:  
Hanson Surveying & Mapping  
832 Horace Mann Drive  
Rapid City, SD 57701  
605-388-9652

October 25, 2004



HALL STREET -- 60' R.O.W.

LAYOUT PLAT

LOTS 40R & 41R IN BLOCK 6 OF HALL SUBDIVISION  
(FORMERLY WEST HALF OF LOT 38, AND ALLOTMENTS 39 THRU 41 IN BLOCK 6 OF HALL SUBDIVISION)  
LOCATED IN GOVT. LOT 3 OF SECTION 4, T1N, R10E,  
RAPID CITY, PENNINGTON COUNTY, SOUTH DAKOTA