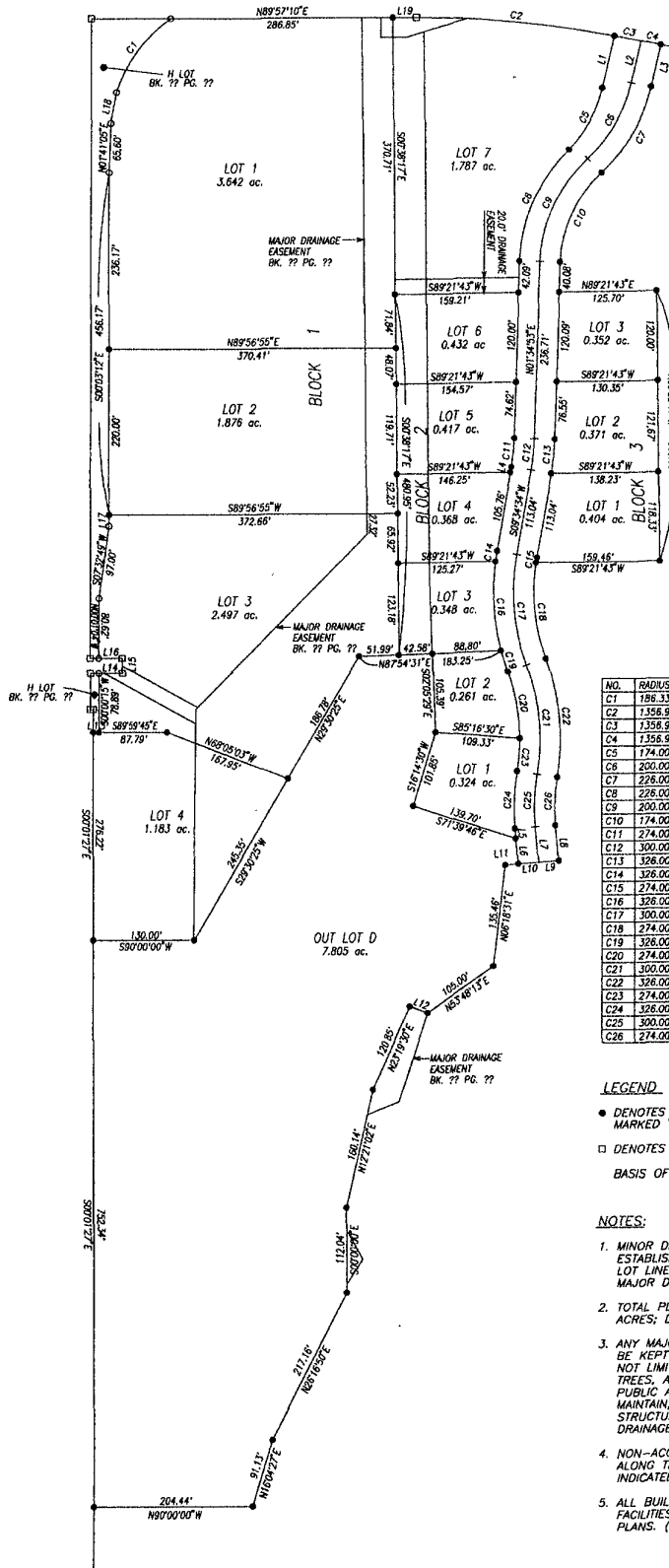
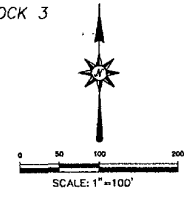


PLAT OF STONEY CREEK SOUTH SUBDIVISION
 INCLUDING LOTS 1-4, BLOCK 1 AND OUTLOT D; LOTS 1-7, BLOCK 2;
 LOTS 1-3, BLOCK 3
 OF STONEY CREEK SUBDIVISION AND DEDICATED BENDT DRIVE
 AND MAJOR DRAINAGE EASEMENTS LOCATED
 IN THE NW 1/4 OF THE SW 1/4 AND THE SW 1/4 OF THE SW 1/4
 OF SECTION 22, T1N, R7E, BHM
 RAPID CITY, PENNINGTON COUNTY, SOUTH DAKOTA



NO.	DIRECTION	DISTANCE
L1	S 12°19'03" W	72.02'
L2	N 12°19'03" E	58.00'
L3	N 12°19'03" E	57.83'
L4	N 05°34'30" E	7.28'
L5	S 04°38'33" W	13.31'
L6	N 04°38'33" W	33.97'
L7	N 04°38'33" W	47.28'
L8	N 04°38'33" W	47.28'
L9	S 85°21'27" W	26.00'
L10	S 85°21'27" W	26.00'
L11	S 85°21'27" W	17.30'
L12	S 68°58'39" E	24.58'
L13	N 89°59'45" W	7.37'
L14	N 89°59'45" W	41.00'
L15	S 00°00'15" W	20.00'
L16	N 89°59'45" W	41.00'
L17	N 02°03'12" W	14.87'
L18	N 10°21'22" E	42.18'
L19	S 89°57'10" W	29.87'

NO.	RADIUS	DELTA ANGLE	ARC L.	TANGENT	CHORD DIR.	CHORD L.
C1	186.33	37°57'15"	123.43	64.08	S 34°54'16" E	121.19
C2	1358.92	10°53'03"	257.77	129.27	N 84°36'19" E	257.38
C3	1358.92	01°28'41"	35.00	17.50	S 78°25'27" E	35.00
C4	1358.92	01°09'53"	26.00	13.00	S 77°08'10" E	26.00
C5	174.00	33°17'45"	95.04	48.74	S 2°55'58" E	93.86
C6	200.00	33°41'44"	117.62	60.57	S 29°09'56" W	115.93
C7	228.00	33°41'44"	132.91	68.44	S 29°09'56" W	131.00
C8	228.00	42°01'56"	185.79	86.83	S 22°35'51" W	182.10
C9	200.00	44°25'55"	155.10	81.68	S 23°47'50" W	151.24
C10	174.00	44°25'55"	134.93	71.06	S 23°47'50" W	131.58
C11	274.00	07°59'41"	38.23	19.12	S 05°34'43" E	38.20
C12	326.00	07°59'41"	41.86	20.93	S 05°34'43" E	41.83
C13	326.00	07°59'41"	45.49	22.79	S 05°34'43" E	45.45
C14	326.00	02°30'13"	14.25	7.12	N 08°19'27" E	14.24
C15	274.00	01°30'00"	7.17	3.59	S 08°49'34" W	7.17
C16	326.00	21°12'41"	120.69	61.04	S 03°32'00" E	120.00
C17	300.00	28°58'29"	151.54	77.42	S 04°53'40" E	149.93
C18	274.00	27°28'29"	131.23	66.90	S 05°38'40" E	129.98
C19	326.00	05°13'54"	29.74	14.88	N 10°45'07" W	29.73
C20	274.00	10°59'52"	90.85	45.86	S 09°51'58" E	90.44
C21	300.00	28°07'11"	147.23	75.13	S 05°18'19" E	145.76
C22	326.00	28°07'11"	159.99	81.64	S 05°18'19" E	158.39
C23	274.00	08°07'18"	43.62	21.86	N 04°11'37" E	43.58
C24	326.00	13°23'48"	76.22	38.29	S 02°03'22" W	76.05
C25	300.00	13°23'48"	70.15	35.23	S 02°03'22" W	69.99
C26	274.00	13°23'48"	64.07	32.18	S 02°03'22" W	63.92

LEGEND

- DENOTES SET 5/8" REBAR WITH SURVEY CAP MARKED "RLS 3977"
- DENOTES FOUND SURVEY MONUMENT

BASIS OF BEARING: PER PREVIOUSLY RECORDED PLAT(S).

NOTES:

- MINOR DRAINAGE AND UTILITY EASEMENTS ARE HEREBY ESTABLISHED 10' WIDE ON THE INTERIOR SIDE OF ALL LOT LINES AND RIGHT-OF-WAY (EXCEPT WHERE MAJOR DRAINAGE EASEMENTS ARE LOCATED)
- TOTAL PLATTED AREA: 23.459 ACRES; LOTS: 22.076 ACRES; DEDICATED PUBLIC RIGHT-OF-WAY: 1.383 ACRES.
- ANY MAJOR DRAINAGE EASEMENT SHOWN HEREON SHALL BE KEPT FREE OF ALL OBSTRUCTIONS INCLUDING BUT NOT LIMITED TO BUILDINGS, WALLS, FENCES, HEDGES, TREES, AND SHRUBS. THESE EASEMENTS GRANT TO ALL PUBLIC AUTHORITIES THE RIGHT TO CONSTRUCT, OPERATE, MAINTAIN, INSPECT AND REPAIR SUCH IMPROVEMENTS AND STRUCTURES AS IT DEEMS EXPEDIENT TO FACILITATE DRAINAGE FROM ANY SOURCE.
- NON-ACCESS EASEMENTS ARE HEREBY ESTABLISHED ALONG THE FIRST FIFTY FEET OF CORNER LOTS OR AS INDICATED HEREON.
- ALL BUILDERS SHALL MAINTAIN EXISTING DRAINAGE FACILITIES IN ACCORDANCE TO APPROVED CONSTRUCTION PLANS. (RAPID CITY ENR. DIV. REQUESTED NOTE)

C:\DDI-PROJECTS\SOUTH-BENDT-SOUTH\PLAT\PLAT.dwg, Layout1, 5/8/2003 3:37:24 PM, 1:2.31041