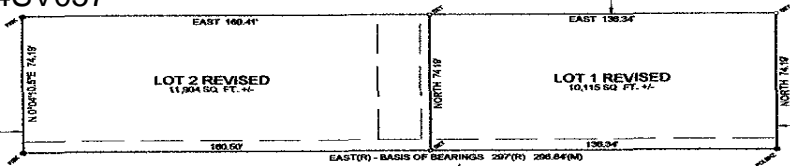


04SV057

WEST RAPID STREET (64' R.O.W.)

32nd STREET (66' R.O.W.)

VALE STREET (60' R.O.W.)



LOT 2 REVISED
11,904 SQ. FT. +/-

LOT 1 REVISED
10,115 SQ. FT. +/-

LOT A
OF LOT 3

LOT B
OF LOT 3

