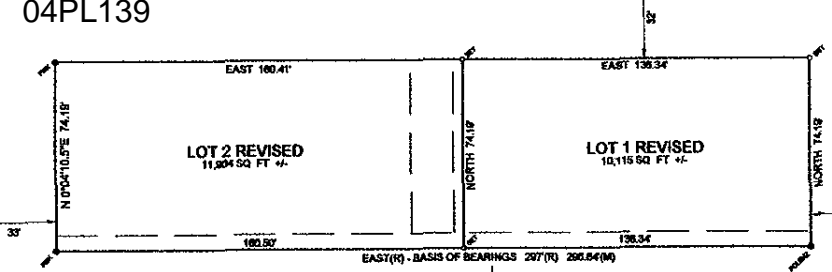


04PL139

WEST RAPID STREET (84' R.O.W.)

32ND STREET (66' R.O.W.)

VALE STREET (60' R.O.W.)



LOT 2 REVISED
11,804 SQ FT +/-

LOT 1 REVISED
10,115 SQ FT +/-

LOT A
OF LOT 3

LOT B
OF LOT 3

