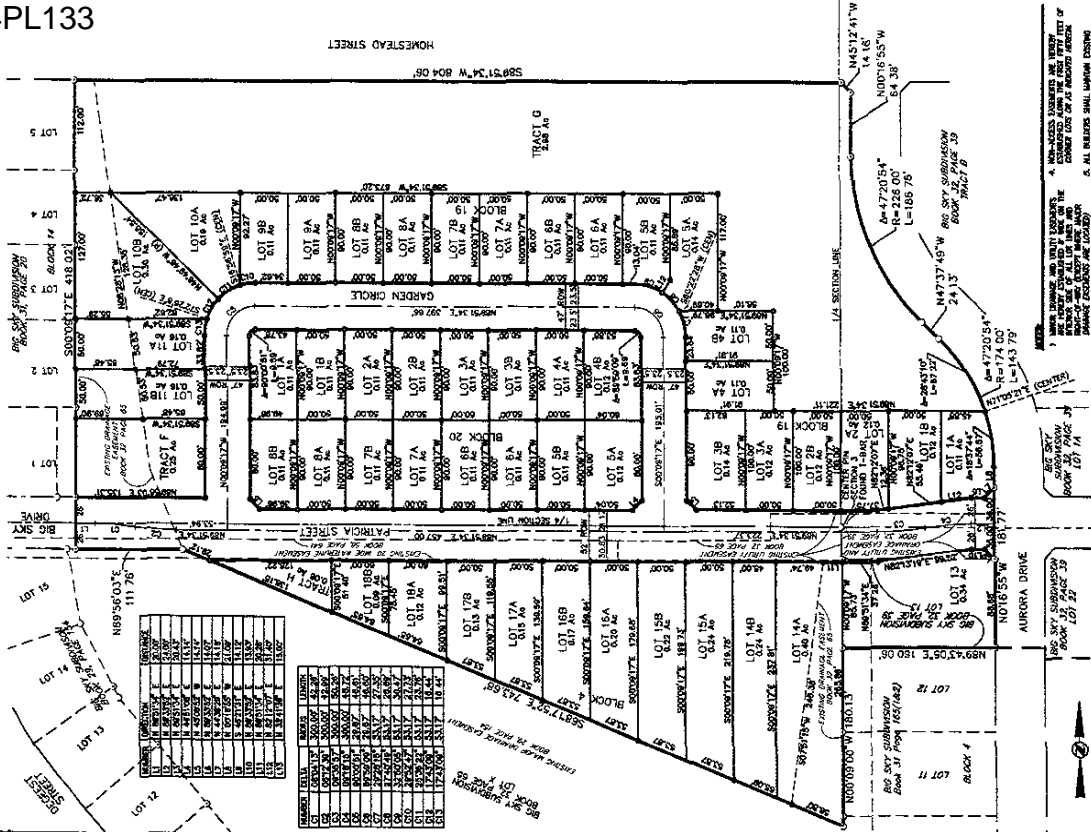


04PL133

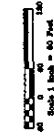
PLAT OF BIG SKY SUBDIVISION

REPLAT OF TRACT E AND LOT 13, BLOCK 4, BIG SKY SUBDIVISION
TRACTS H, LOTS 13A-18A, LOTS 13B-18B, BLOCK 4, TRACTS F AND G, LOTS 1A-11A, LOTS 1B-11B, BLOCK 1B;
TRACTS M, LOTS 1A-6A, LOTS 1B-6B, BLOCK 20; AND DEDICATED STREETS
LOCATED IN THE SASSANUKA AND NEAUNWA SECTIONS 3, 7IN, 8E, B.H.M.
PENNINGTON COUNTY, CITY OF RAPID CITY, SOUTH DAKOTA



TRACT	AREA	ACRES
TRACT A	300.00	6.88
TRACT B	300.00	6.88
TRACT C	300.00	6.88
TRACT D	300.00	6.88
TRACT E	300.00	6.88
TRACT F	300.00	6.88
TRACT G	300.00	6.88
TRACT H	300.00	6.88
TRACT I	300.00	6.88
TRACT J	300.00	6.88
TRACT K	300.00	6.88
TRACT L	300.00	6.88
TRACT M	300.00	6.88
TRACT N	300.00	6.88
TRACT O	300.00	6.88
TRACT P	300.00	6.88
TRACT Q	300.00	6.88
TRACT R	300.00	6.88
TRACT S	300.00	6.88
TRACT T	300.00	6.88
TRACT U	300.00	6.88
TRACT V	300.00	6.88
TRACT W	300.00	6.88
TRACT X	300.00	6.88
TRACT Y	300.00	6.88
TRACT Z	300.00	6.88

TRACT	AREA	ACRES
TRACT A	300.00	6.88
TRACT B	300.00	6.88
TRACT C	300.00	6.88
TRACT D	300.00	6.88
TRACT E	300.00	6.88
TRACT F	300.00	6.88
TRACT G	300.00	6.88
TRACT H	300.00	6.88
TRACT I	300.00	6.88
TRACT J	300.00	6.88
TRACT K	300.00	6.88
TRACT L	300.00	6.88
TRACT M	300.00	6.88
TRACT N	300.00	6.88
TRACT O	300.00	6.88
TRACT P	300.00	6.88
TRACT Q	300.00	6.88
TRACT R	300.00	6.88
TRACT S	300.00	6.88
TRACT T	300.00	6.88
TRACT U	300.00	6.88
TRACT V	300.00	6.88
TRACT W	300.00	6.88
TRACT X	300.00	6.88
TRACT Y	300.00	6.88
TRACT Z	300.00	6.88



Prepared for:

Design Design International, Inc.
3201 Avenue City Center, Suite 4
Rapid City, SD 57701
605-343-3300



PREPARED BY:
ARMY & ASSOCIATES

802 MAIN STREET
DEADWOOD, SD 57732
605-939-1807

JOB NO. 04-0031

DATE: 08/20/04
SCALE: 1" = 80'
DRAWN BY: [REDACTED]

APPROVED: [REDACTED]
DATE: ESTIMATED: 08-15-2004

LEGEND

- Delineates wet 3/4" or more with 30% or more water content.
- Delineates Found Survey Monument

1. THESE PLATS, MAPS AND SURVEY INSTRUMENTS SHALL BE KEPT OF RECORD IN THE OFFICE OF THE REGISTERED PROFESSIONAL SURVEYOR FOR THE COUNTY OF PENNINGTON, SOUTH DAKOTA.
2. TOTAL PLATTED AREA: 1312 ACRES. (SEE PLAT FOR DETAILS.)
3. ALL RIGHTS SHALL REMAIN WITH THE ORIGINAL GRANTOR UNLESS OTHERWISE SPECIFIED ON THESE PLATS.
4. ALL RIGHTS SHALL REMAIN WITH THE ORIGINAL GRANTOR UNLESS OTHERWISE SPECIFIED ON THESE PLATS.
5. ALL RIGHTS SHALL REMAIN WITH THE ORIGINAL GRANTOR UNLESS OTHERWISE SPECIFIED ON THESE PLATS.
6. ALL RIGHTS SHALL REMAIN WITH THE ORIGINAL GRANTOR UNLESS OTHERWISE SPECIFIED ON THESE PLATS.
7. ALL RIGHTS SHALL REMAIN WITH THE ORIGINAL GRANTOR UNLESS OTHERWISE SPECIFIED ON THESE PLATS.
8. ALL RIGHTS SHALL REMAIN WITH THE ORIGINAL GRANTOR UNLESS OTHERWISE SPECIFIED ON THESE PLATS.
9. ALL RIGHTS SHALL REMAIN WITH THE ORIGINAL GRANTOR UNLESS OTHERWISE SPECIFIED ON THESE PLATS.
10. ALL RIGHTS SHALL REMAIN WITH THE ORIGINAL GRANTOR UNLESS OTHERWISE SPECIFIED ON THESE PLATS.