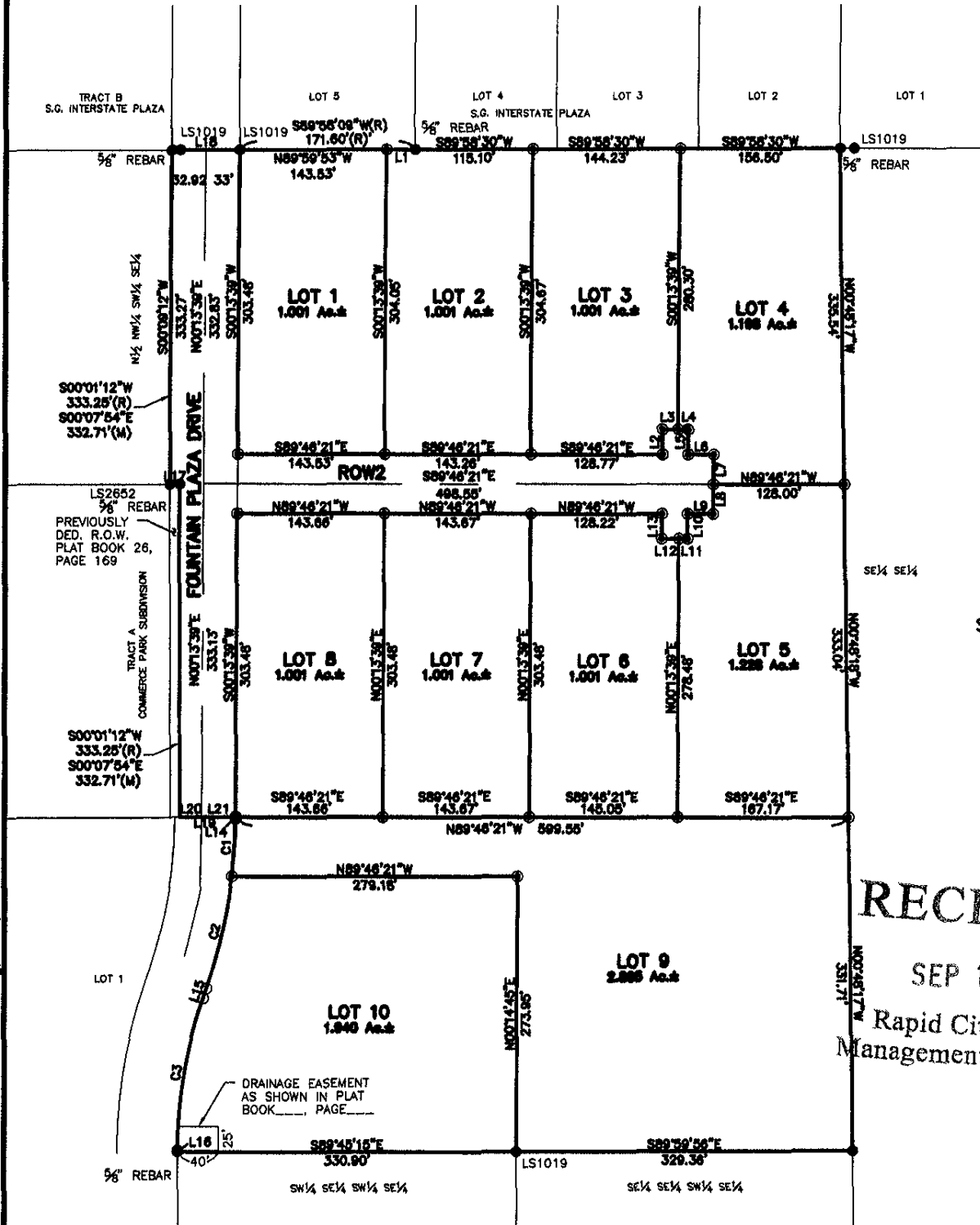


PLAT OF
LOTS 1 THROUGH 10, BLOCK 2,
COMMERCE PARK SUBDIVISION

(FORMERLY IN THE NE 1/4 OF THE SW 1/4 OF THE SE 1/4, AND THE N 1/2 OF THE SE 1/4 OF THE SW 1/4 OF THE SE 1/4, ALL IN SECTION 27, T1N, R7E)
LOCATED IN THE E 1/2 OF THE SW 1/4 OF THE SE 1/4,
SECTION 27, T1N, R7E, B.H.M.,
RAPID CITY, PENNINGTON COUNTY, SOUTH DAKOTA



SEPTEMBER 10, 2004
NO SCALE

RECEIVED
SEP 10 2004
Rapid City Growth
Management Department