

RECEIVED

AUG 27 2004

Rapid City Growth
Management Department

PRELIMINARY PLAT OF
LOTS 8, 9, 10 AND 11 OF BLOCK 3;
AND LOTS 5, 6, 7, AND 8 OF BLOCK 4;
AND DEDICATED RIGHT-OF-WAY OF PARK MEADOWS SUBDIVISION
LOCATED IN THE NE1/4 OF SE1/4, SECTION 7, T1N, R8E, B.H.M.
RAPID CITY, PENNINGTON COUNTY, SOUTH DAKOTA



1830 West Fulton Street
Rapid City, SD 57702
1021 Jackson Avenue
Rapid City, SD 57701
Phone: (605) 341-7800
celco@celcoinc.com

CELCO
Engineering Services, Inc.

DESIGNED: []
CHECKED: []
APPROVED: []
DATE: 8/23/04

PRELIMINARY PLAT

SHEET DESCRIPTION

PARK MEADOWS SUBDIVISION
PAPER 3
RAPID CITY, SOUTH DAKOTA

PROJECT

SHEET

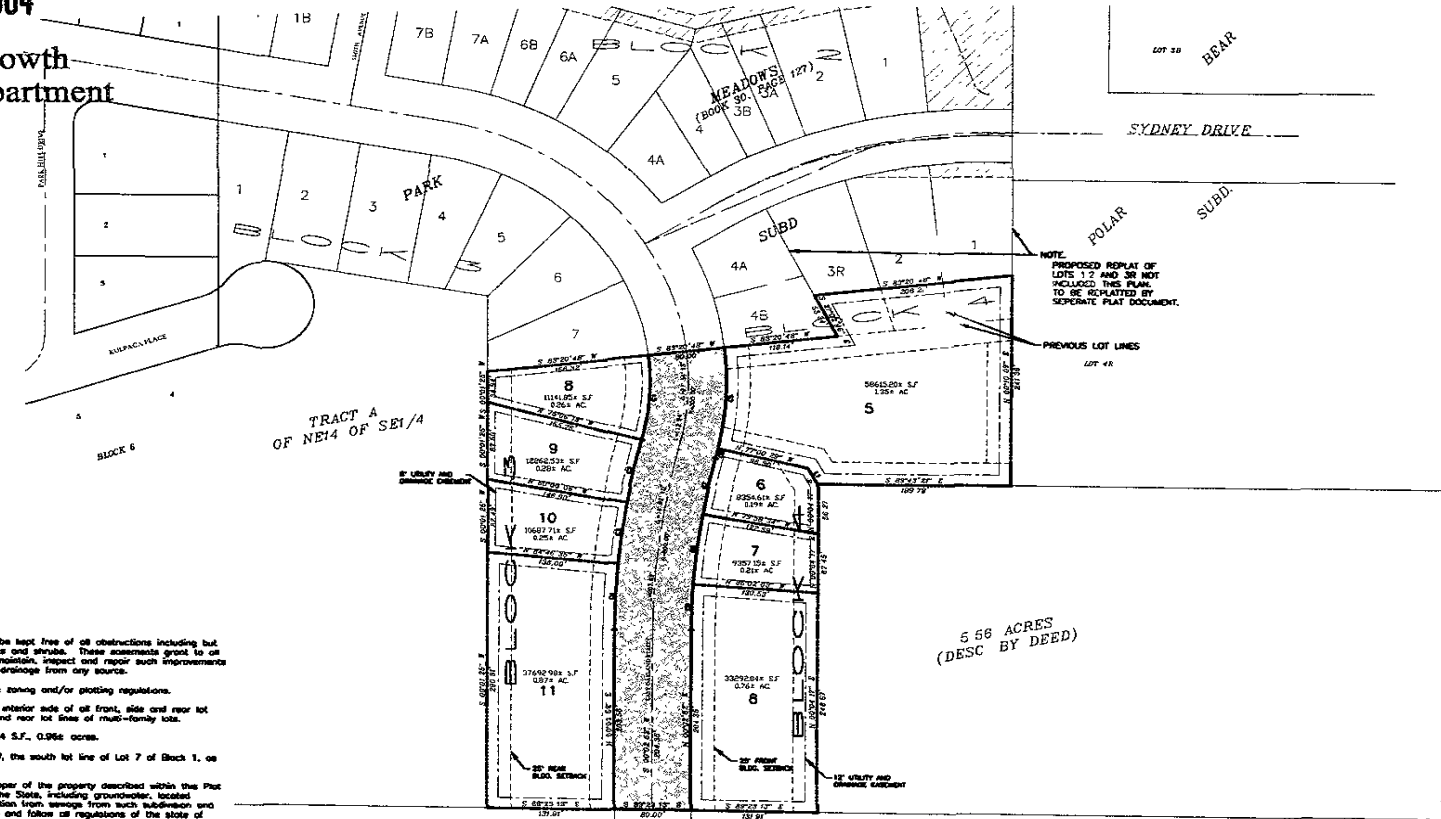
3



GRID PATTERN: EXISTING MAJOR DRAINAGE CATCHMENT
DASHED LINE: DEDICATED RIGHT-OF-WAY

NOTES:

- All major drainage easements shown hereon shall be kept free of all obstructions including but not limited to buildings, walls, fences, hedges, trees and shrubs. These easements grant to or public authorities the right to construct, operate, maintain, inspect and repair such improvements and structures as it deems expedient to facilitate drainage from any source.
- Building Setback requirements are as stated in the zoning and/or plotting regulations.
- Utility and Minor Drainage Easements - 5' on the interior side of all front, side and rear lot lines. 12' on the exterior side of all front, side and rear lot lines of multi-family lots.
- Total right-of-way dedicated by this plat: 41961.24 S.F., 0.956 acres.
- Scale of Bearing: Record bearing of S 83°07'45" W, the south lot line of Lot 7 of Block 1, as shown on the plat of Park Meadows Subdivision.
- Pursuant to SDC1, §-3-6.1 and §-3-3.2, The Developer of the property described within the Plat shall be responsible for protecting any waters of the State, including groundwater, located adjacent to or within such plotted area from pollution from sewage from such subdivision and shall in prosecution of such protection conform to and follow all regulations of the state of South Dakota Department of Environment and Natural Resources relating to the same.



LOT A OF LOT 2
SUPERPUMPER ADDITION

LOT C OF LOT 2
SUPERPUMPER ADDITION

DATE PLAT FILED: 8/23/04 10:45 AM BY: CELCO ENGINEERING SERVICES, INC.