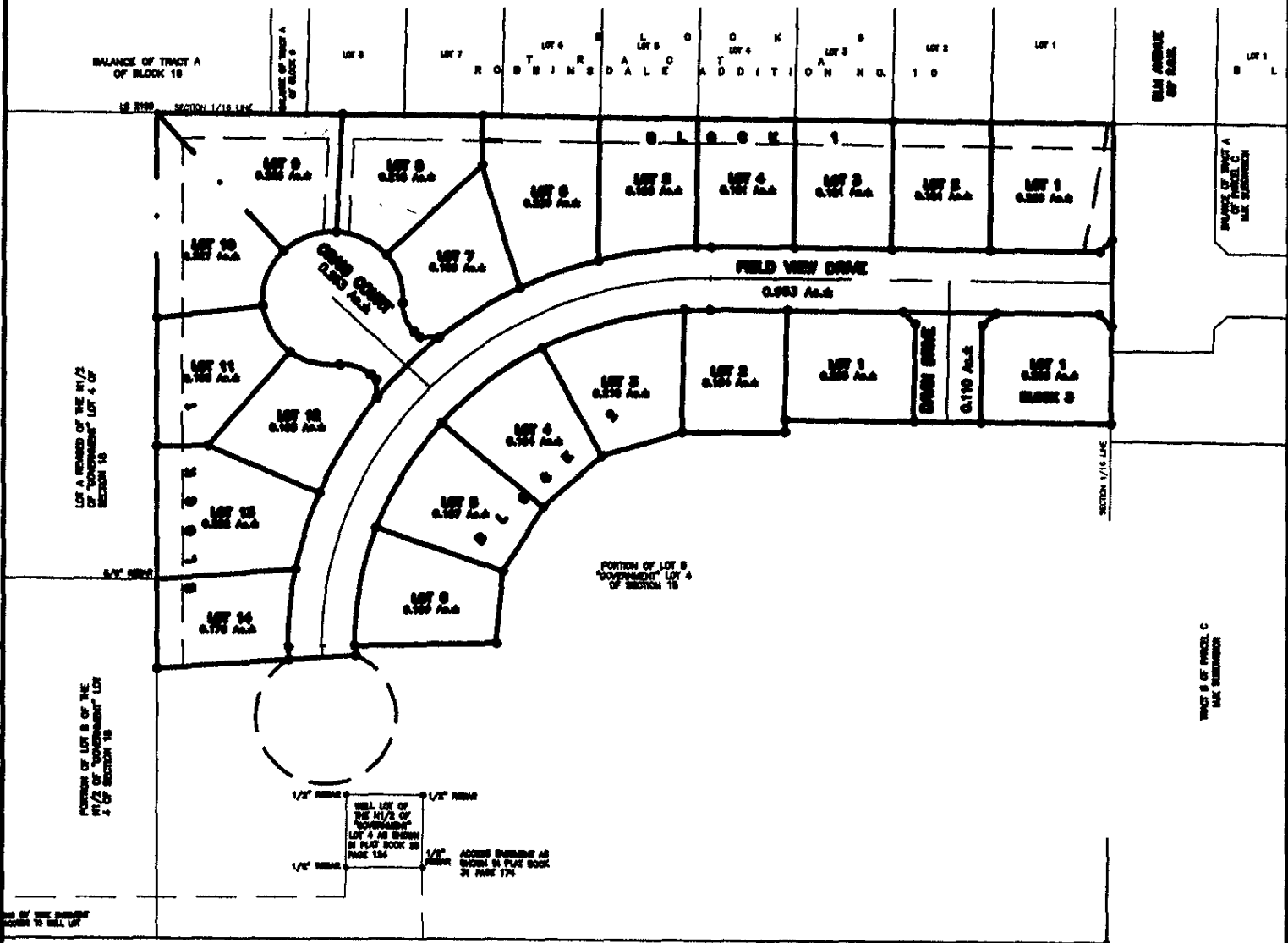


PLAT OF
LOTS 1 THRU 14 OF BLOCK 1, LOTS 1 THRU 6 OF BLOCK 2,
AND LOT 1 OF BLOCK 3
KENNSINGTON HEIGHTS SUBDIVISION

(formerly a portion of Lot B of Government Lot 4)
LOCATED IN THE SW 1/4 OF THE SW 1/4
SECTION 18, T1N, R8E, BHM
RAPID CITY, PENNINGTON COUNTY, SOUTH DAKOTA



JANUARY 9, 2004
N.T.S.