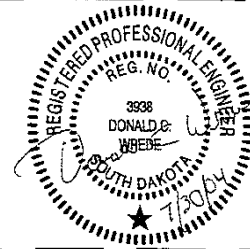
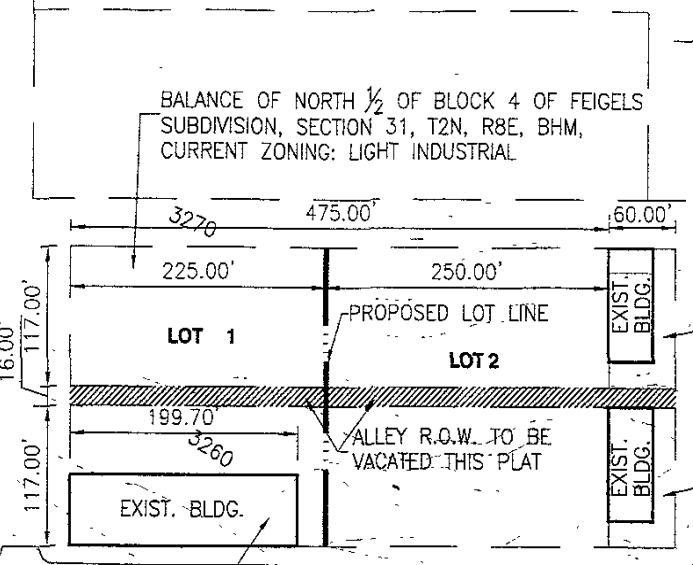


04SV049

### PROPOSED LOTS 1 AND 2 OF BLOCK 4 OF FEIGELS SUBDIVISION IN SECTION 31, T2N, R8E, B.H.M.



BALANCE OF NORTH 1/2 OF BLOCK 4 OF FEIGELS SUBDIVISION, SECTION 31, T2N, R8E, BHM, CURRENT ZONING: LIGHT INDUSTRIAL



LOT 1-2 OF FEIGELS SUBDIVISION, SECTION 31, T2N, R8E, BHM, CURRENT ZONING: LIGHT INDUSTRIAL

LOT 1-2 OF FEIGELS SUBDIVISION, SECTION 31, T2N, R8E, BHM, CURRENT ZONING: LIGHT INDUSTRIAL

BALANCE OF SOUTH 1/2 OF BLOCK 4 OF FEIGELS SUBDIVISION, SECTION 31, T2N, R8E, BHM. CURRENT ZONING: LIGHT INDUSTRIAL

E. MADISON STREET

N. SPRUCE STREET

N. CHERRY AVE.

E. WATERTOWN STREET

RILEY AVE.

E. NORTH STREET



TSP Three, Inc  
600 Kansas City Street  
Rapid City, SD 57701-2712  
P: (605) 343-9102  
F: (605) 343-7159  
E-Mail: tspthree@earthlink.net

E. WATERTOWN STREET 4-PLEXES 03040315

LAYOUT PLAT

Scale: 1"=100'