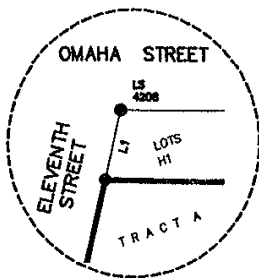


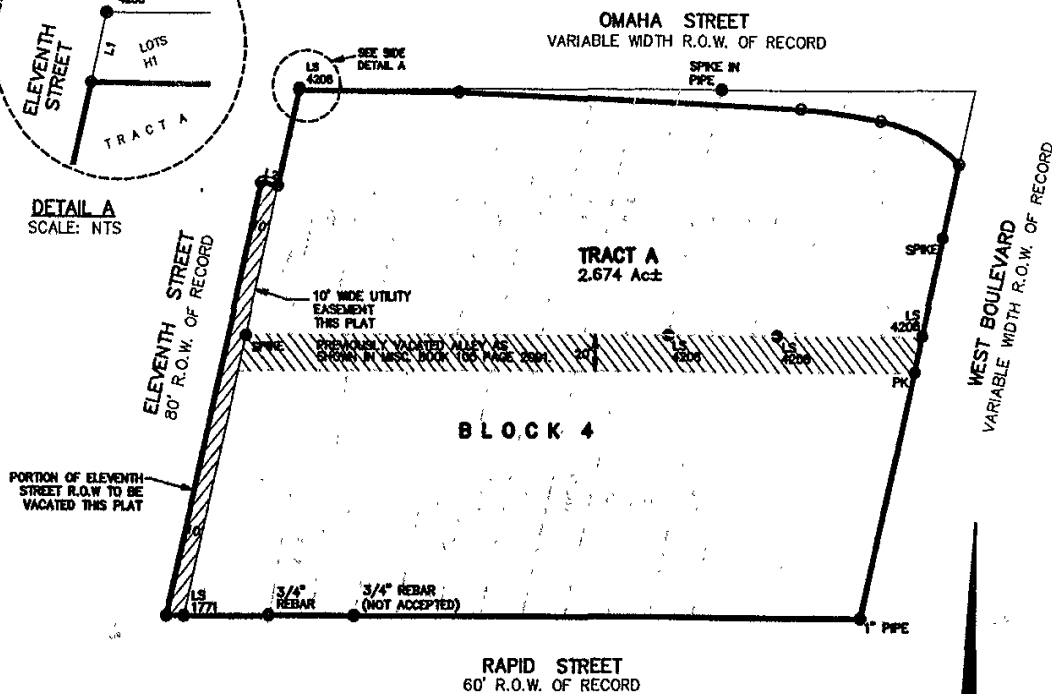
LAYOUT PLAT TRACT A OF BLOCK 4 RIVERSIDE ADDITION

(formerly Lots 1 thru 16, Lots 21 thru 28, Lots A thru F,
and vacated alley, all located in Block 4 of Riverside Addition,
and a portion of Eleventh St. Right-of-Way)

LOCATED IN SE1/4 OF SE1/4,
SECTION 35, T.2.N., R.7.E., B.H.M.,
RAPID CITY, PENNINGTON COUNTY, SOUTH DAKOTA



DETAIL A
SCALE: NTS



JULY 26, 2004



SCALE 1" = 100'

Renner Associates, LLC.

616 Sixth St. * Rapid City, SD 57701 * 605/721-7310

FAX: 605/721-7313 * E-MAIL: Gary@RennerAssoc.com

* Spearfish 605/717-0016 *



CITY HALL 1903