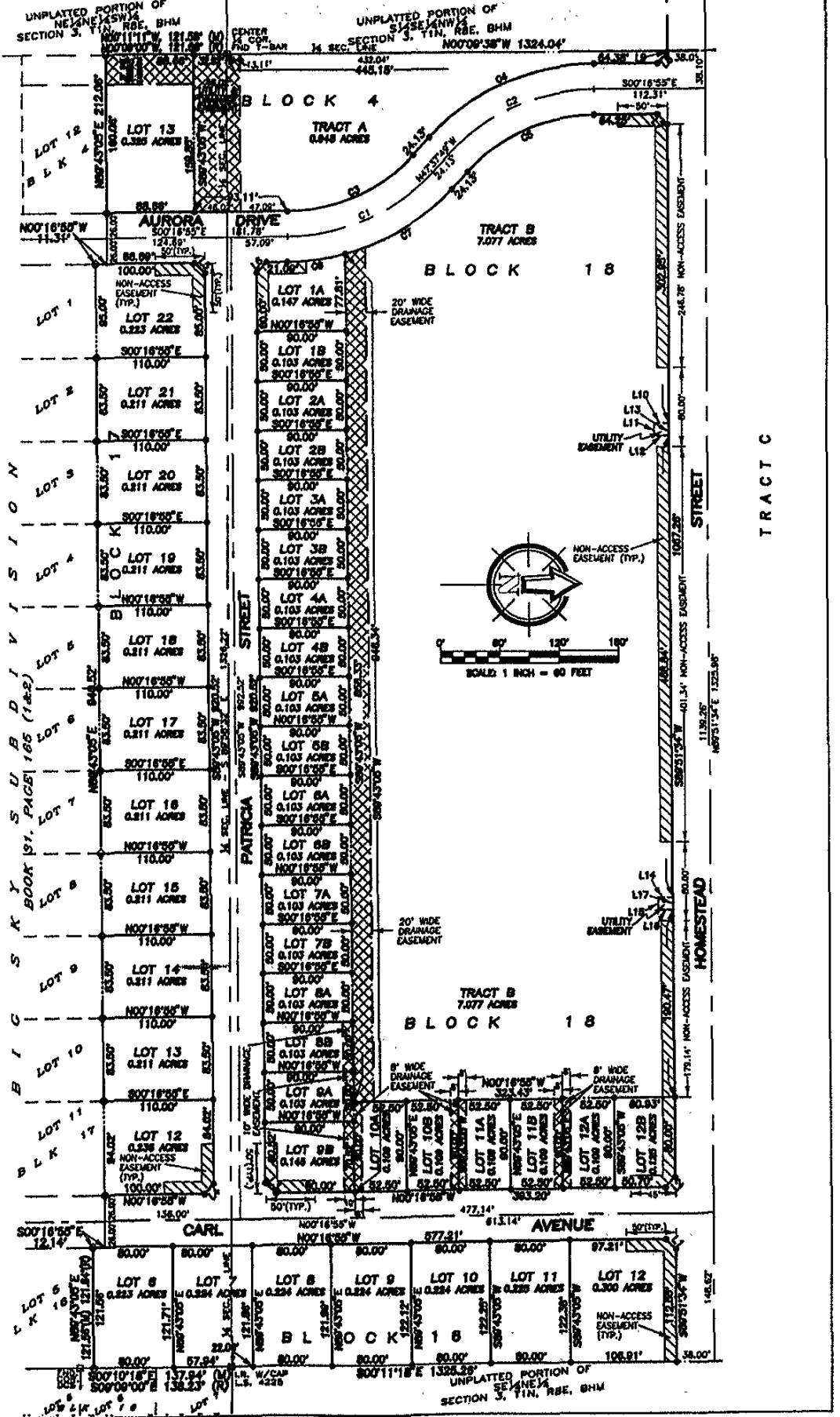


PLAT OF BIG SKY SUBDIVISION

LOT 13 & TRACT A, BLOCK 4; LOTS 6-12, BLOCK 16; LOTS 12-22, BLOCK 17; LOTS 1A-12A, LOTS 18-12B & TRACT B, BLOCK 18; TRACT C AND DEDICATED STREETS LOCATED IN THE N1/4, NW1/4 AND SW1/4 OF SECTION 3, T1N, R8E, B1M., CITY OF RAPID CITY, PENNINGTON COUNTY, SOUTH DAKOTA



TRACT C

HOMESTEAD STREET

TRACT B
BLOCK 18

UNPLATTED PORTION OF SECTION 3, T1N, R8E, B1M