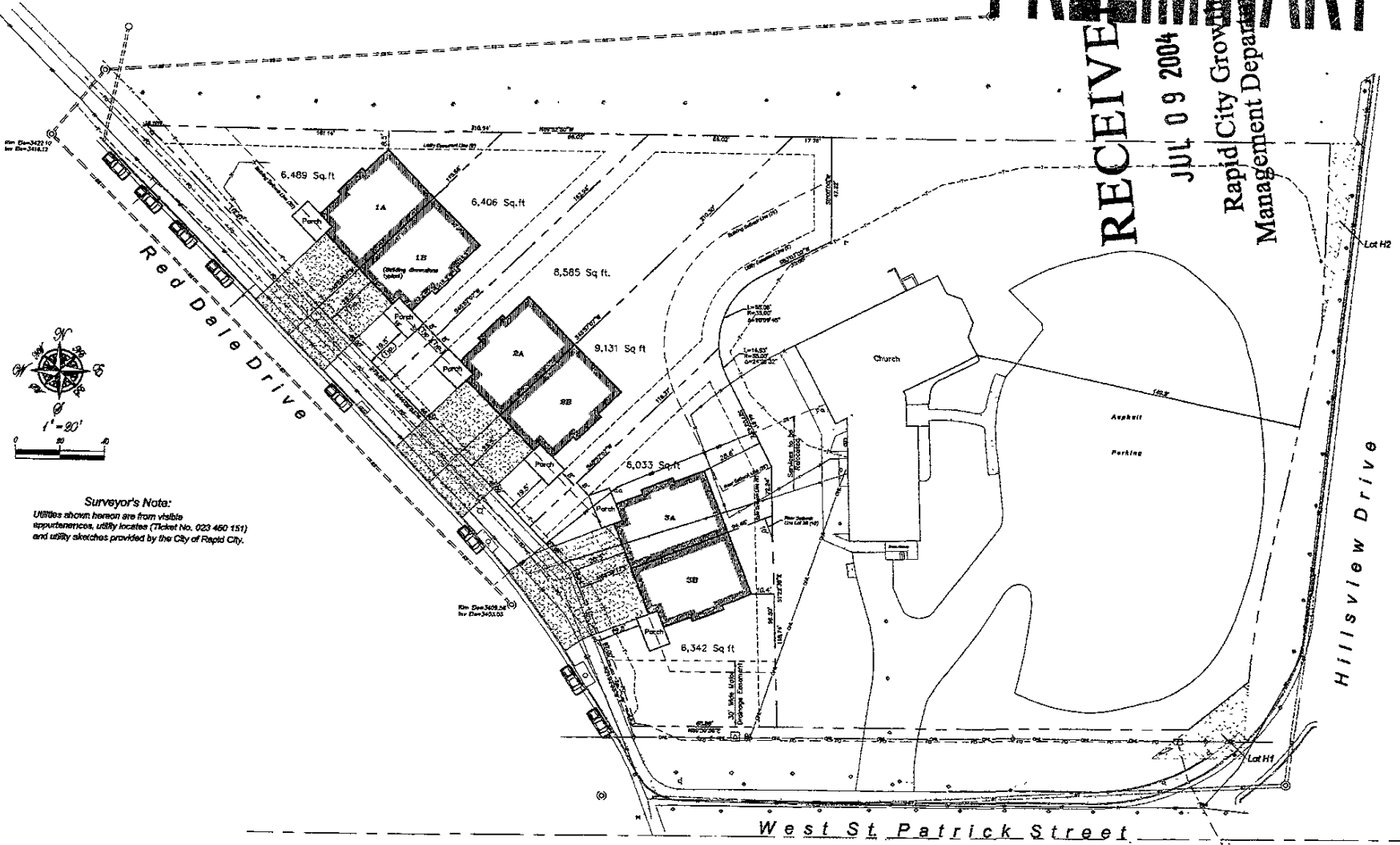


PRELIMINARY

RECEIVED
JUL 09 2004
Rapid City Growth
Management Department



Surveyor's Note:

Utilities shown hereon are from visible appurtenances, utility locates (Ticket No. 023 460 151) and utility sketches provided by the City of Rapid City.

See Plan 3428.24
for Plan 3453.00

Site Plan - Lot 1 - SW1/4 SW1/4 Section 4, T1N, R7E, BHM
Rapid City, South Dakota
Canyon Lake Church of God - 1829 Hillsview Drive

DESIGNED BY: JWF
DRAWN BY: BML/LAR
DATE: 7/20/04
CHECKED BY: JWF
FISK LAND SURVEYING
AND CONSULTING ENGINEERS, INC.

PROJECT No. 02322
1030 MAIN STREET, P.O. BOX 8154
RAPID CITY, SOUTH DAKOTA 57709
(605) 346-1358 FAX (605) 341-1112