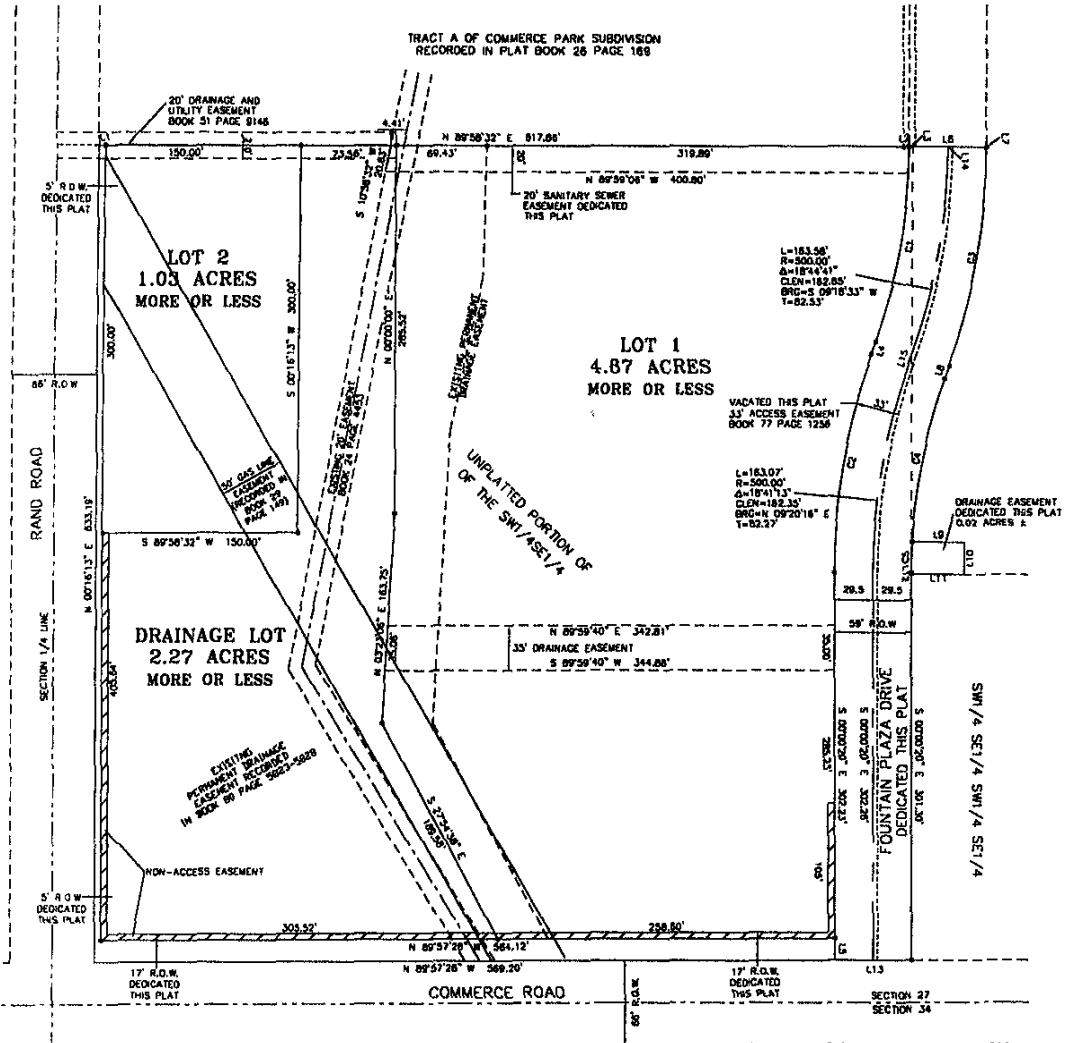


PLAT OF COMMERCE PARK SUBDIVISION  
INCLUDING LOT 1, LOT 2 AND DRAINAGE LOT, BLOCK 1  
AND DEDICATED STREETS

FORMERLY A PORTION OF THE UNPLATTED PORTION OF THE SW1/4 SE1/4 OF SECTION 27, T2N, R7E, B.H.M., RAPID CITY, PENNINGTON COUNTY, SOUTH DAKOTA

TRACT A OF COMMERCE PARK SUBDIVISION  
RECORDED IN PLAT BOOK 26 PAGE 168



| LINE | BEARING       | DISTANCE |
|------|---------------|----------|
| L1   | N 89°58'32" E | 3.22'    |
| L2   | N 89°58'32" E | 4.41'    |
| L3   | S 20°32'45" E | 0.66'    |
| L4   | S 18°40'32" W | 10.64'   |
| L5   | S 89°58'32" E | 7.00'    |
| L6   | N 89°58'32" E | 59.00'   |
| L7   | S 80°12'45" E | 0.64'    |
| L8   | S 18°40'32" W | 18.64'   |
| L9   | S 89°58'32" E | 19.50'   |
| L10  | S 80°14'37" W | 82.00'   |
| L11  | N 89°49'03" W | 40.00'   |
| L12  | N 89°58'32" W | 0.80'    |
| L13  | N 89°57'28" W | 561.12'  |
| L14  | S 80°32'49" E | 0.66'    |
| L15  | S 18°40'32" W | 18.64'   |

| CURVE | RADIUS  | DELTA ANGLE | ARC LENGTH | CHORD BEARING | CHORD LEN |
|-------|---------|-------------|------------|---------------|-----------|
| CD1   | 470.50' | 18°44'41"   | 183.03'    | N 09°18'33" E | 183.24'   |
| CD2   | 524.50' | 16°41'13"   | 173.30'    | N 09°20'18" E | 173.83'   |
| CD3   | 529.50' | 18°44'41"   | 173.23'    | N 09°18'33" E | 172.48'   |
| CD4   | 470.50' | 19°43'30"   | 128.42'    | N 17°48'13" E | 128.62'   |
| CD5   | 470.50' | 02°58'34"   | 24.03'     | N 01°27'27" E | 24.03'    |

- NOTES:
- MINOR DRAINAGE AND UTILITY EASEMENTS ARE HEREBY ESTABLISHED 8' WIDE ON THE INTERIOR SIDE OF ALL LOT LINES AND EXTERIOR OF RIGHT-OF-WAY. (EXCEPT WHERE MAJOR DRAINAGE EASEMENTS ARE LOCATED.)
  - ANY MAJOR DRAINAGE AND UTILITY EASEMENT SHOWN HEREON SHALL BE KEPT FREE OF ALL OBSTRUCTIONS INCLUDING BUT NOT LIMITED TO BUILDINGS, WALLS, FENCES, HEDGES, TREES AND SHRUBS. THESE EASEMENTS GRANT TO ALL PUBLIC AUTHORITIES THE RIGHT TO CONSTRUCT, OPERATE, MAINTAIN, INSPECT AND REPAIR SUCH IMPROVEMENTS AND STRUCTURES AS IT DEEMS EXPEDIENT TO FACILITATE DRAINAGE FROM ANY SOURCE.
  - TOTAL PLATTED AREA: 8.33 ACRES;  
TOTAL AREA OF LOTS PLATTED: 8.17 ACRES;  
TOTAL ROW ARE PLATTED: 116 ACRES



PREPARED FOR  
BREAM DESIGN INTERNATIONAL, INC  
528 KANSAS CITY STREET, SUITE 4  
RAPID CITY, SD 57701  
(605) 348-0538

PREPARED BY:  
**ARLETH & ASSOCIATES**

382 MAIN STREET  
DEADWOOD, SD 57732  
605-678-1837

JOB NO.  
8814

DATE: APRIL 18, 2004  
SCALE: 1" = 60'  
DRAWN: T. VIG

APPROVED: JMA

DWG: cmm-park-plat.dwg