

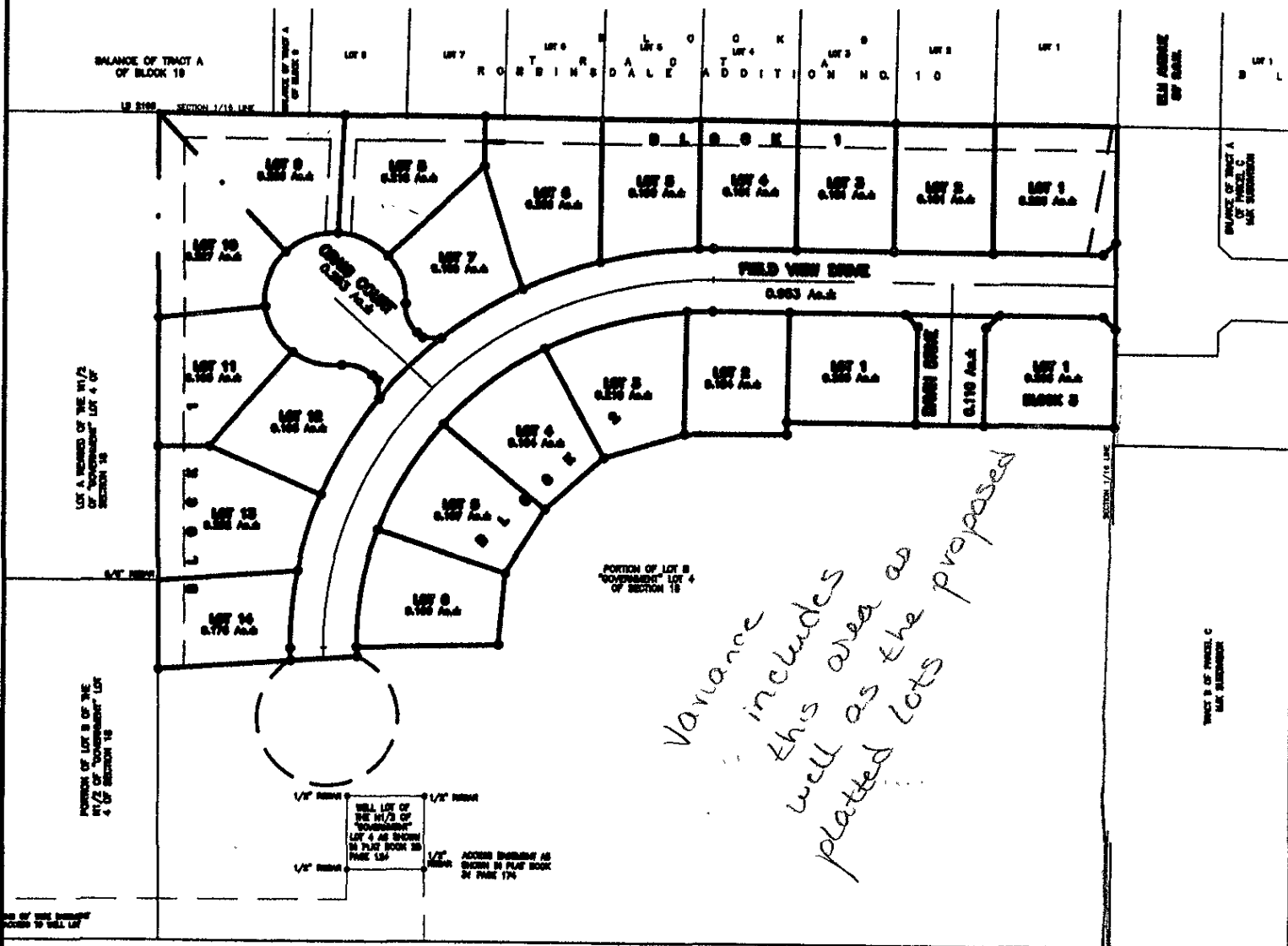
PLAT OF  
LOTS 1 THRU 14 OF BLOCK 1, LOTS 1 THRU 6 OF BLOCK 2,  
AND LOT 1 OF BLOCK 3  
KENNSINGTON HEIGHTS SUBDIVISION

(formerly a portion of Lot B of Government Lot 4)

LOCATED IN THE SW<sup>1</sup>/<sub>4</sub> OF THE SW<sup>1</sup>/<sub>4</sub>

SECTION 18, T1N, R8E, BHM

RAPID CITY, PENNINGTON COUNTY, SOUTH DAKOTA



*Variance includes this area as well as the proposed platted lots*



JANUARY 9, 2004

N.T.S.