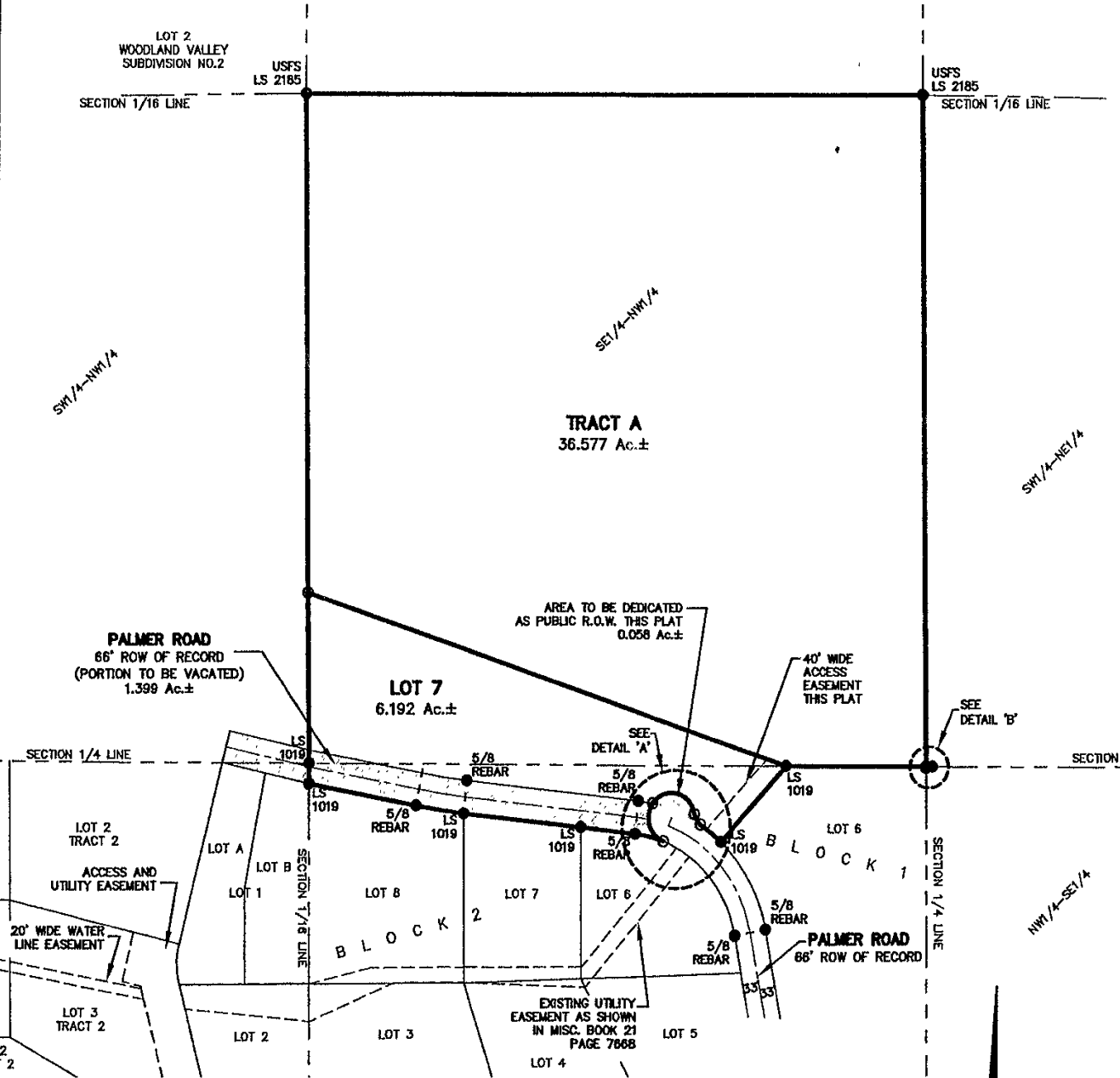


# PLAT OF LOT 7 OF BLOCK 1, & TRACT A, PALMER SUBDIVISION

(formerly the SE1/4 of the NW1/4, a portion of the NE1/4 of the SW1/4,  
and a portion of Palmer Road in Section 14.)

LOCATED IN THE SE1/4 OF THE NW1/4, and NE1/4 of the SW1/4,  
SECTION 14, T2N, R6E, BHM  
PENNINGTON COUNTY, SOUTH DAKOTA



## Renner Associates, LLC.

616 Sixth St. \* Rapid City, SD 57701 \* 605/721-7310  
FAX: 605/721-7313 \* E-MAIL: Gary@RennerAssoc.com  
\* Spearfish 605/717-0016 \*

MAY 18, 2004  
SCALE: 1"=200'



CITY HALL 1903