

FAIRMONT
BLVD.

EXISTING
80'
R.O.W.

80' R.O.W.
(CONT.)

3.23 AC.

R=150'

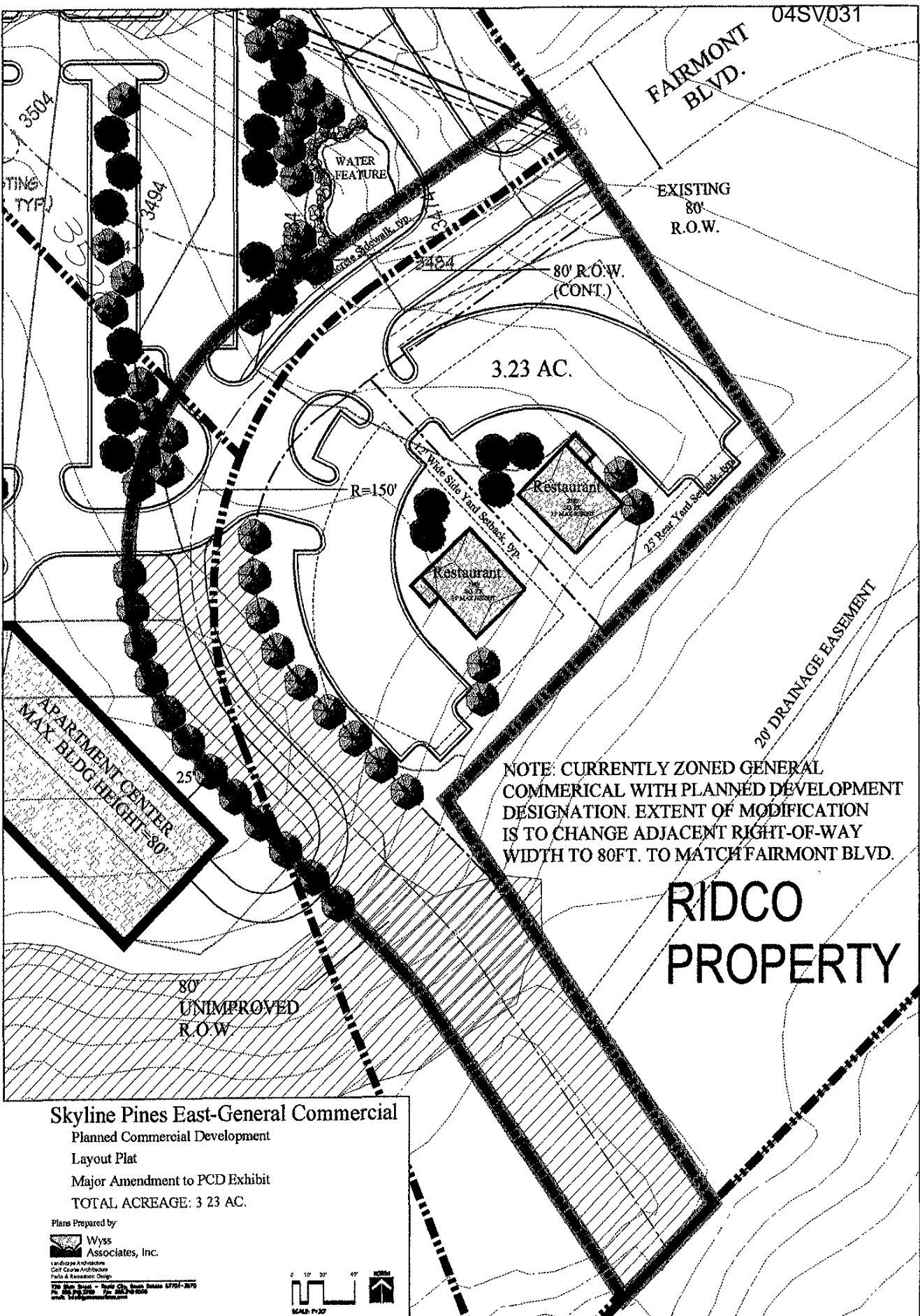
NOTE: CURRENTLY ZONED GENERAL
COMMERCIAL WITH PLANNED DEVELOPMENT
DESIGNATION. EXTENT OF MODIFICATION
IS TO CHANGE ADJACENT RIGHT-OF-WAY
WIDTH TO 80FT. TO MATCH FAIRMONT BLVD.

RIDCO
PROPERTY

20' DRAINAGE EASEMENT

80'
UNIMPROVED
R.O.W.

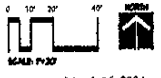
APARTMENT CENTER
MAX. BLDG HEIGHT=80'



Skyline Pines East-General Commercial
Planned Commercial Development
Layout Plat
Major Amendment to PCD Exhibit
TOTAL ACREAGE: 3.23 AC.

Plans Prepared by
Wyss Associates, Inc.
Landscape Architecture
Civil/Structural Architect
Patio & Recreation Design

2700 20th Street, Suite 200, Boulder, CO 80501
Tel: 303.440.1234 Fax: 303.440.1235
www.wyssassociates.com



March 26, 2004