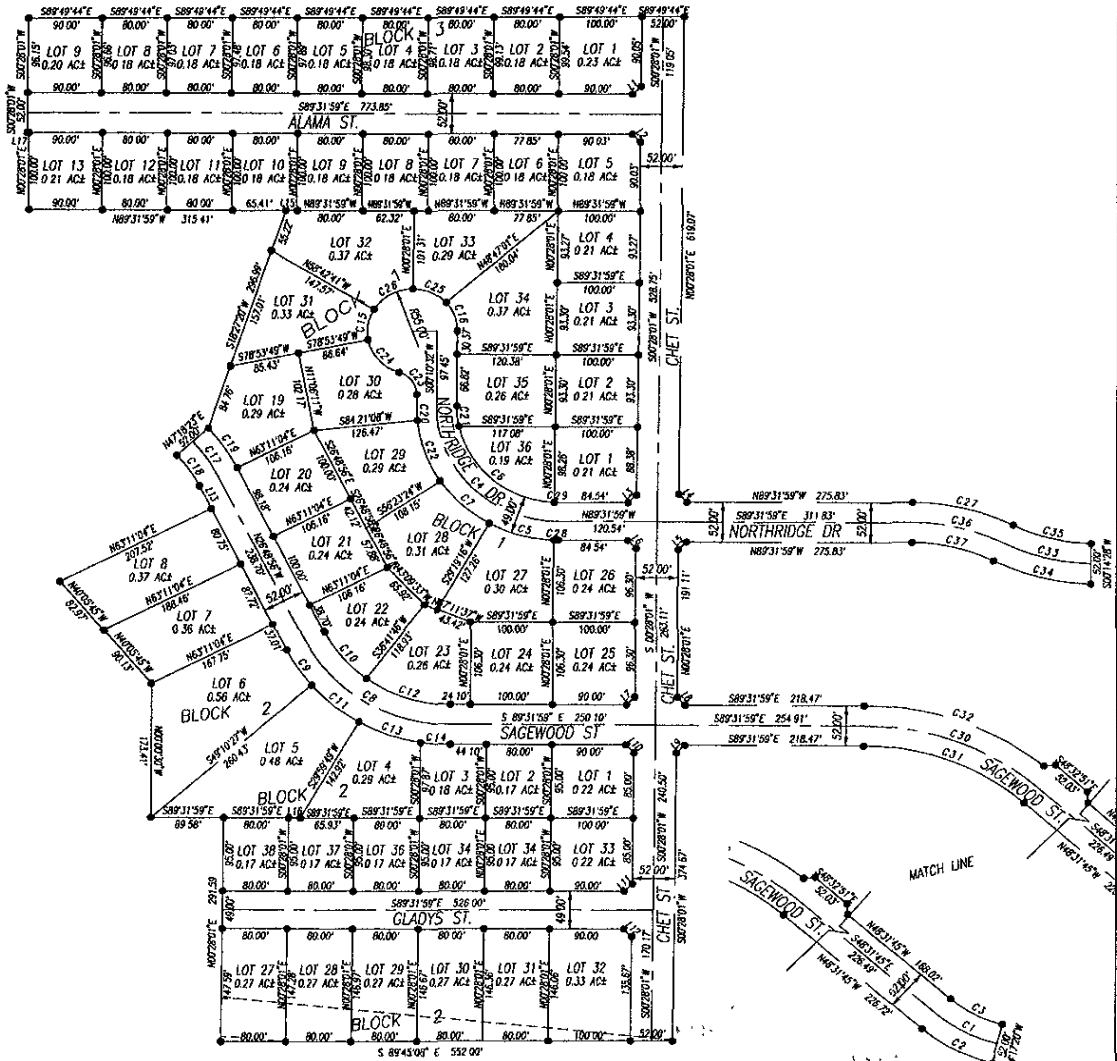


RAINBOW RIDGE SUBDIVISION
LOTS 1-8 & LOTS 33-38, BLK 1; LOTS 27-32, BLK 2,
LOTS 1-9, BLK 3;
LOCATED IN THE SW 1/4 NE 1/4 AND SE 1/4 NE 1/4
ALL IN SECTION 23, T2N, R7E, B.H.M.,
CITY OF RAPID CITY, PENNINGTON COUNTY, SOUTH DAKOTA

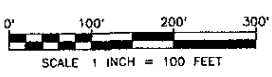


LEGEND

- DENOTES SET 5/8" REBAR WITH SURVEY CAP MARKED "RLS 3977"
- DENOTES FOUND SURVEY MONUMENT

NOTES:

- 1 MINOR DRAINAGE AND UTILITY EASEMENTS ARE HEREBY ESTABLISHED 8' WIDE ON THE INTERIOR SIDE OF ALL LOT LINES AND RIGHT-OF-WAY (EXCEPT WHERE MAJOR DRAINAGE EASEMENTS ARE LOCATED)
2. TOTAL PLATTED AREA: 20.81ACRES, LOTS: 14.67 ACRES, DEDICATED PUBLIC RIGHT-OF-WAY 6.14 ACRES.
3. ANY MAJOR DRAINAGE EASEMENT SHOWN HEREON SHALL BE KEPT FREE OF ALL OBSTRUCTIONS INCLUDING BUT NOT LIMITED TO BUILDINGS, WALLS, FENCES, HEDGES, TREES, AND SHRUBS. THESE EASEMENTS GRANT TO ALL PUBLIC AUTHORITIES THE RIGHT TO CONSTRUCT, OPERATE, MAINTAIN, INSPECT AND REPAIR SUCH IMPROVEMENTS AND STRUCTURES AS IT DEEMS EXPEDIENT TO FACILITATE DRAINAGE FROM ANY SOURCE
- 4 NON-ACCESS EASEMENTS ARE HEREBY ESTABLISHED ALONG THE FIRST FIFTY FEET OF CORNER LOTS OR AS INDICATED HEREON.



PREPARED BY:
ARLETH & ASSOCIATES

382 MAIN STREET
DEADWOOD, SD 57732
605-578-1637

JOB NO
03-0089

DATE JUNE 2004
SCALE: 1" = 100'
DRAWN

APPROVED: JMA
DWC RAINBOWRIDGE-PLAT DTC

PREPARED FOR:
DREAM VISION INTERNATIONAL, INC.
518 KANSAS CITY STREET, SUITE 4
RAPID CITY, SOUTH DAKOTA 57701
(605) 341-0510