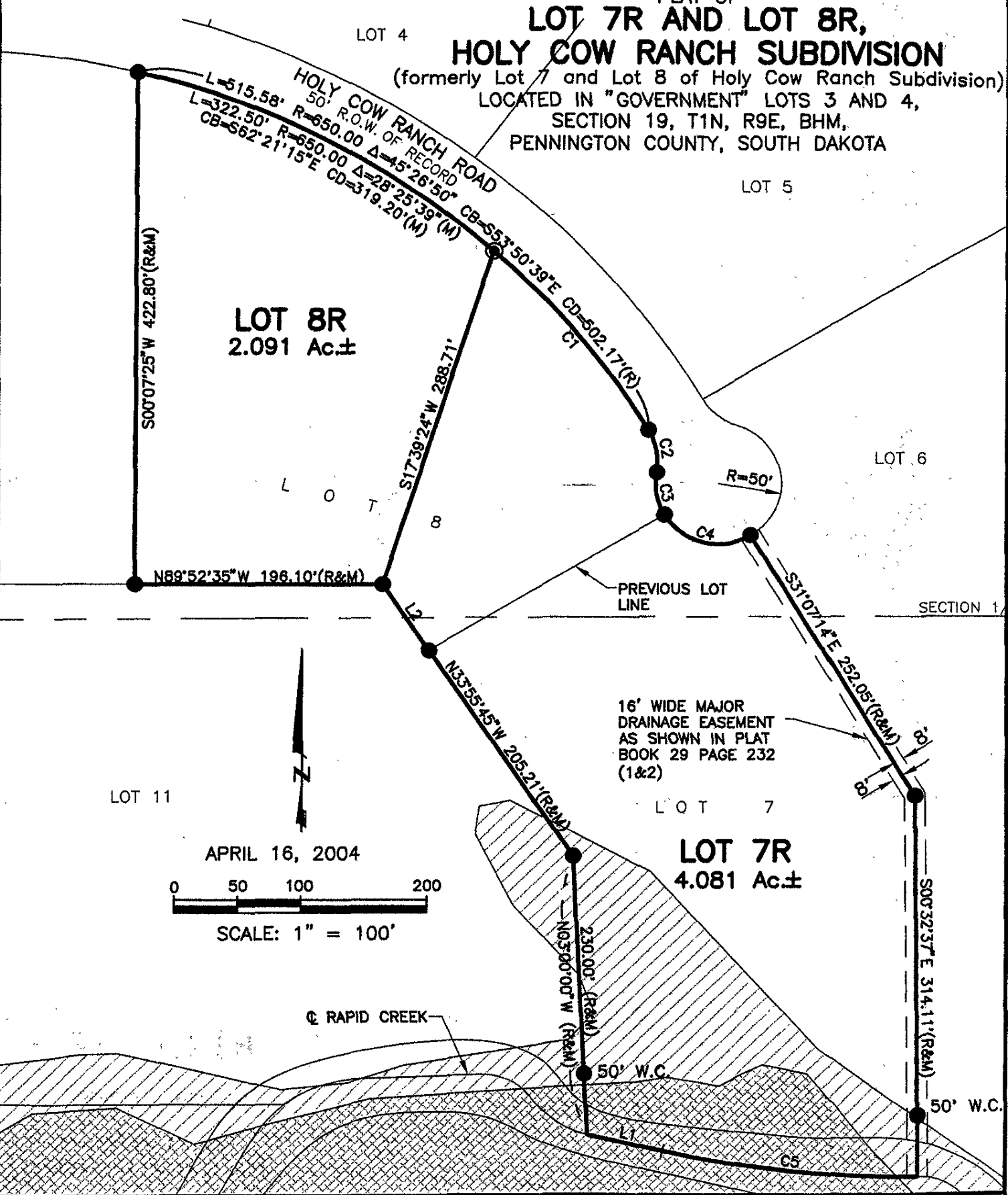


PLAT OF LOT 7R AND LOT 8R, HOLY COW RANCH SUBDIVISION

(formerly Lot 7 and Lot 8 of Holy Cow Ranch Subdivision)
LOCATED IN "GOVERNMENT" LOTS 3 AND 4,
SECTION 19, T1N, R9E, BHM,
PENNINGTON COUNTY, SOUTH DAKOTA



LOT 11

APRIL 16, 2004



SCALE: 1" = 100'

Ⓢ RAPID CREEK

16' WIDE MAJOR
DRAINAGE EASEMENT
AS SHOWN IN PLAT
BOOK 29 PAGE 232
(1&2)

LOT 7

LOT 7R
4.081 Ac.±