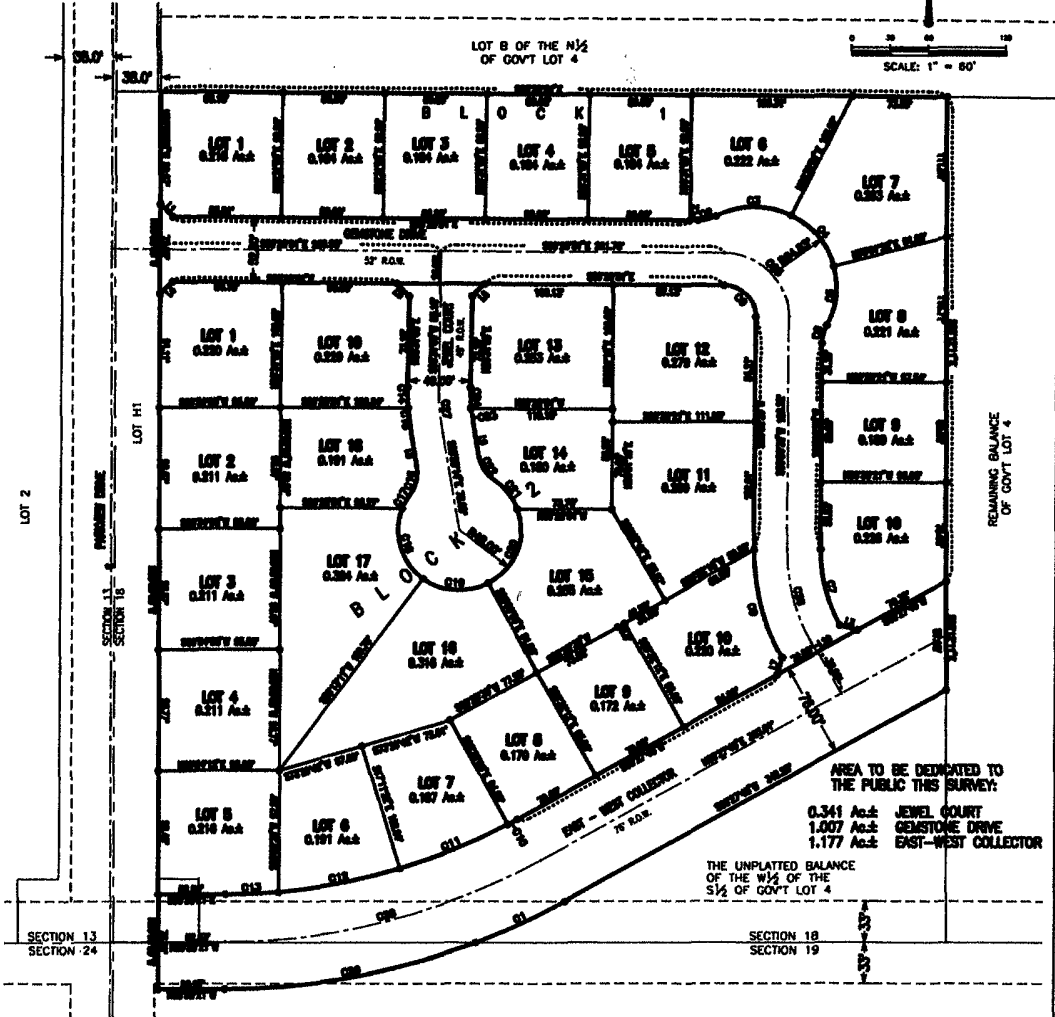


**PLAT OF LOTS 1 THRU 10 OF BLOCK 1
AND LOTS 1 THRU 19 OF BLOCK 2
OF STONERIDGE SUBDIVISION
(FORMERLY A PORTION OF THE W¹/₄ OF THE S¹/₂ OF GOVERNMENT LOT 4)
LOCATED IN THE SW¹/₄ OF THE SW¹/₄
OF SECTION 18, T1N, R0E, BHM
RAPID CITY, PENNINGTON COUNTY, SOUTH DAKOTA**



SCALE: 1" = 80'



AREA TO BE DEDICATED TO THE PUBLIC THIS SURVEY:
0.341 Acre: JEWEL COURT
1.007 Acre: GEMSTONE DRIVE
1.177 Acre: EAST-WEST COLLECTOR

THE UNPLATTED BALANCE OF THE W¹/₄ OF THE S¹/₂ OF GOV'T LOT 4

LINE	BEARING	LENGTH	BEARING	LENGTH	BEARING	LENGTH	BEARING	LENGTH
C1	N 89° 50' 00" E	12.42	N 89° 50' 00" E	12.42	N 89° 50' 00" E	12.42	N 89° 50' 00" E	12.42
C2	N 89° 50' 00" E	12.42	N 89° 50' 00" E	12.42	N 89° 50' 00" E	12.42	N 89° 50' 00" E	12.42
C3	N 89° 50' 00" E	12.42	N 89° 50' 00" E	12.42	N 89° 50' 00" E	12.42	N 89° 50' 00" E	12.42
C4	N 89° 50' 00" E	12.42	N 89° 50' 00" E	12.42	N 89° 50' 00" E	12.42	N 89° 50' 00" E	12.42
C5	N 89° 50' 00" E	12.42	N 89° 50' 00" E	12.42	N 89° 50' 00" E	12.42	N 89° 50' 00" E	12.42
C6	N 89° 50' 00" E	12.42	N 89° 50' 00" E	12.42	N 89° 50' 00" E	12.42	N 89° 50' 00" E	12.42
C7	N 89° 50' 00" E	12.42	N 89° 50' 00" E	12.42	N 89° 50' 00" E	12.42	N 89° 50' 00" E	12.42
C8	N 89° 50' 00" E	12.42	N 89° 50' 00" E	12.42	N 89° 50' 00" E	12.42	N 89° 50' 00" E	12.42
C9	N 89° 50' 00" E	12.42	N 89° 50' 00" E	12.42	N 89° 50' 00" E	12.42	N 89° 50' 00" E	12.42
C10	N 89° 50' 00" E	12.42	N 89° 50' 00" E	12.42	N 89° 50' 00" E	12.42	N 89° 50' 00" E	12.42
C11	N 89° 50' 00" E	12.42	N 89° 50' 00" E	12.42	N 89° 50' 00" E	12.42	N 89° 50' 00" E	12.42
C12	N 89° 50' 00" E	12.42	N 89° 50' 00" E	12.42	N 89° 50' 00" E	12.42	N 89° 50' 00" E	12.42
C13	N 89° 50' 00" E	12.42	N 89° 50' 00" E	12.42	N 89° 50' 00" E	12.42	N 89° 50' 00" E	12.42
C14	N 89° 50' 00" E	12.42	N 89° 50' 00" E	12.42	N 89° 50' 00" E	12.42	N 89° 50' 00" E	12.42
C15	N 89° 50' 00" E	12.42	N 89° 50' 00" E	12.42	N 89° 50' 00" E	12.42	N 89° 50' 00" E	12.42
C16	N 89° 50' 00" E	12.42	N 89° 50' 00" E	12.42	N 89° 50' 00" E	12.42	N 89° 50' 00" E	12.42
C17	N 89° 50' 00" E	12.42	N 89° 50' 00" E	12.42	N 89° 50' 00" E	12.42	N 89° 50' 00" E	12.42
C18	N 89° 50' 00" E	12.42	N 89° 50' 00" E	12.42	N 89° 50' 00" E	12.42	N 89° 50' 00" E	12.42
C19	N 89° 50' 00" E	12.42	N 89° 50' 00" E	12.42	N 89° 50' 00" E	12.42	N 89° 50' 00" E	12.42
C20	N 89° 50' 00" E	12.42	N 89° 50' 00" E	12.42	N 89° 50' 00" E	12.42	N 89° 50' 00" E	12.42
C21	N 89° 50' 00" E	12.42	N 89° 50' 00" E	12.42	N 89° 50' 00" E	12.42	N 89° 50' 00" E	12.42
C22	N 89° 50' 00" E	12.42	N 89° 50' 00" E	12.42	N 89° 50' 00" E	12.42	N 89° 50' 00" E	12.42
C23	N 89° 50' 00" E	12.42	N 89° 50' 00" E	12.42	N 89° 50' 00" E	12.42	N 89° 50' 00" E	12.42
C24	N 89° 50' 00" E	12.42	N 89° 50' 00" E	12.42	N 89° 50' 00" E	12.42	N 89° 50' 00" E	12.42
C25	N 89° 50' 00" E	12.42	N 89° 50' 00" E	12.42	N 89° 50' 00" E	12.42	N 89° 50' 00" E	12.42
C26	N 89° 50' 00" E	12.42	N 89° 50' 00" E	12.42	N 89° 50' 00" E	12.42	N 89° 50' 00" E	12.42
C27	N 89° 50' 00" E	12.42	N 89° 50' 00" E	12.42	N 89° 50' 00" E	12.42	N 89° 50' 00" E	12.42
C28	N 89° 50' 00" E	12.42	N 89° 50' 00" E	12.42	N 89° 50' 00" E	12.42	N 89° 50' 00" E	12.42
C29	N 89° 50' 00" E	12.42	N 89° 50' 00" E	12.42	N 89° 50' 00" E	12.42	N 89° 50' 00" E	12.42
C30	N 89° 50' 00" E	12.42	N 89° 50' 00" E	12.42	N 89° 50' 00" E	12.42	N 89° 50' 00" E	12.42

LINE	BEARING	LENGTH	BEARING	LENGTH
L1	N 89° 50' 00" E	12.42	N 89° 50' 00" E	12.42
L2	N 89° 50' 00" E	12.42	N 89° 50' 00" E	12.42
L3	N 89° 50' 00" E	12.42	N 89° 50' 00" E	12.42
L4	N 89° 50' 00" E	12.42	N 89° 50' 00" E	12.42
L5	N 89° 50' 00" E	12.42	N 89° 50' 00" E	12.42
L6	N 89° 50' 00" E	12.42	N 89° 50' 00" E	12.42
L7	N 89° 50' 00" E	12.42	N 89° 50' 00" E	12.42
L8	N 89° 50' 00" E	12.42	N 89° 50' 00" E	12.42
L9	N 89° 50' 00" E	12.42	N 89° 50' 00" E	12.42
L10	N 89° 50' 00" E	12.42	N 89° 50' 00" E	12.42

LEGEND
 • DENOTES SET 5/8" REBAR WITH SURVEY CAP MARKED "PLS 3077"
 □ DENOTES FOUND SURVEY MONUMENT
 BASIS OF BEARING:

NOTES
 1. MINOR DRAINAGE AND UTILITY EMBLEMERS ARE HEREBY EXTENDED TO BUILDINGS WITHIN THE INTERIOR SIZE OF ALL LOT LINES AND RIGHT-OF-WAY. (EXCEPT WHERE MAJOR DRAINAGE EMBLEMERS ARE LOCATED)
 2. TOTAL PLATTED AREA: ACRES
 3. ANY MAJOR DRAINAGE EMBLEMERS SHOWN HEREON SHALL BE KEPT FREE OF ALL OBSTRUCTIONS INCLUDING BUT NOT LIMITED TO BUILDINGS, WALLS, FENCES, HEDGES, TREES, AND SHRUBS. THESE EMBLEMERS GRANT TO ALL PUBLIC AUTHORITIES THE RIGHT TO CONSTRUCT, OPERATE, MAINTAIN, INSPECT AND REPAIR SUCH IMPROVEMENTS AND STRUCTURES AS IT DEEMS EXPEDIENT TO FACILITATE DRAINAGE FROM ANY SOURCE.