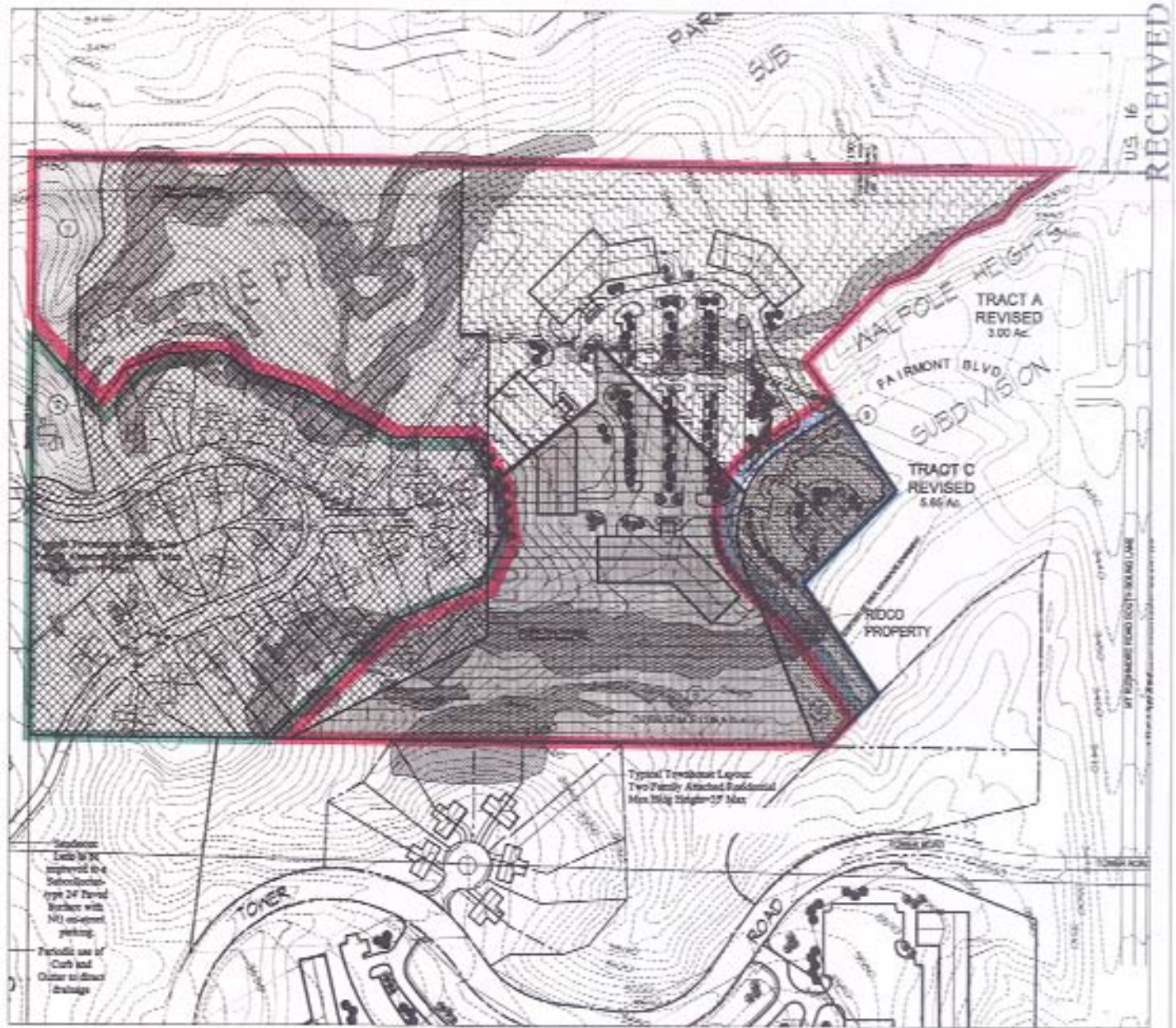


Skyline Pines East Proposed Tract Balance Rezone Exhibit

- KEY:**
- CURRENTLY PARK FOREST
 - CURRENTLY LDR
 - CURRENTLY GENERAL COMMERCIAL
 - CURRENTLY GENERAL COMMERCIAL
 - CURRENTLY MDR
 - PROPOSED (GENERAL) COMMERCIAL
 - PROPOSED LDRS RESIDENTIAL
 - PROPOSED OFFICE COMMERCIAL
- 1 AREA TO BE REZONED FROM PARK FOREST TO OFFICE COMMERCIAL
 - 2 AREA TO BE REZONED FROM PARK FOREST TO LDRS
 - 3 AREA TO BE REZONED FROM LDR TO OFFICE COMMERCIAL
 - 4 AREA TO BE REZONED FROM LDR TO OFFICE COMMERCIAL
 - 5 AREA TO BE REZONED FROM MDR TO LDRS
 - 6 AREA TO BE REZONED FROM MDR TO OFFICE COMMERCIAL
 - 7 AREA TO BE REZONED FROM (GENERAL) COMMERCIAL TO OFFICE COMMERCIAL
 - 8 AREA TO BE REZONED FROM MDR TO GENERAL COMMERCIAL
 - 9 AREA TO BE REZONED FROM OFFICE COMMERCIAL TO (GENERAL) COMMERCIAL

Wynn
Associates, Inc.
1000 Lakeside Drive
Rapid City, SD 57701
605.342.1111

April 8, 2006



RECEIVED
APR 7 2006
Rapid City Growth
Management Department