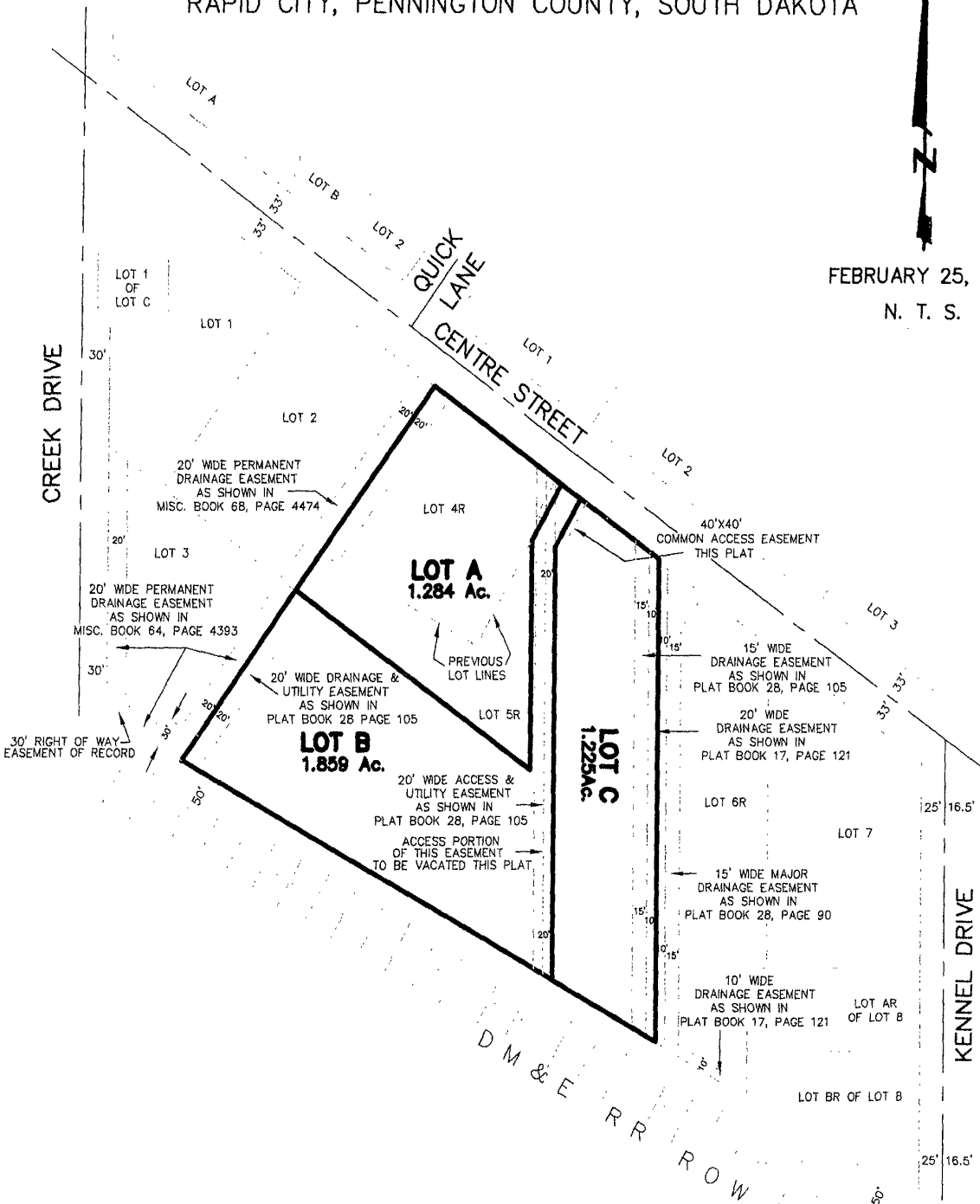


PLAT OF LOTS A, B & C OF LOTS 4R AND 5R SALE BARN SUBDIVISION

LOCATED IN SE1/4 OF NW1/4
SECTION 5, T1N, R8E, BHM
RAPID CITY, PENNINGTON COUNTY, SOUTH DAKOTA



FEBRUARY 25, 2004

N. T. S.



CITY HALL 1903

Renner Associates, LLC.

618 Sixth St. * Rapid City, SD 57701 * 605/721-7310
 FAX: 605/721-7313 * E-MAIL: Gary@RennerAssoc.com
 * Spearfish 605/717-0016 *