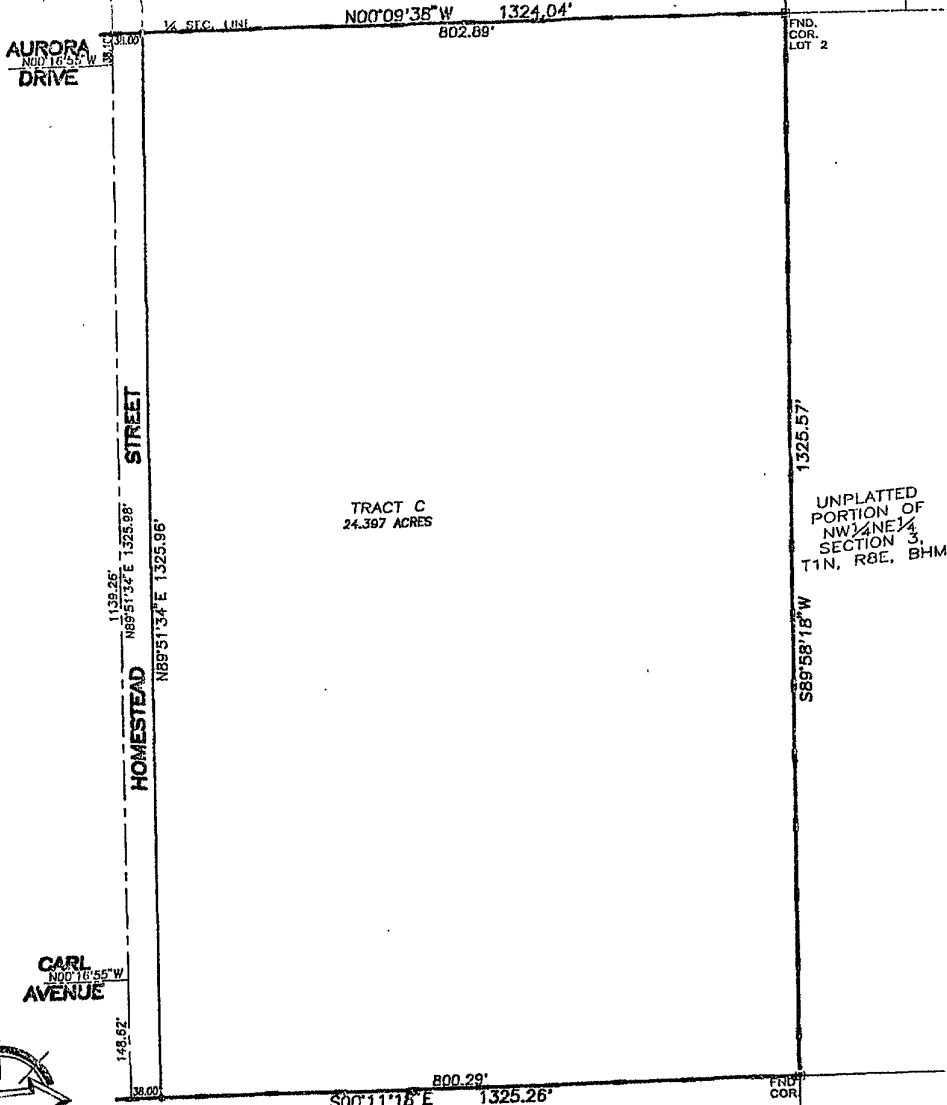


**PLAT OF BIG SKY SUBDIVISION**

LOT 13 & TRACT A, BLOCK 4;  
 LOTS 6-12, BLOCK 16;  
 LOTS 1A-12A, LOTS 1B-12B & TRACT B, BLOCK 18;  
 TRACT C AND DEDICATED STREETS  
 LOCATED IN THE NW<sup>1</sup>/<sub>4</sub>NE<sup>1</sup>/<sub>4</sub> AND SW<sup>1</sup>/<sub>4</sub>NE<sup>1</sup>/<sub>4</sub> OF SECTION 3, T1N, R8E, B.H.M.,  
 CITY OF RAPID CITY, PENNINGTON COUNTY, SOUTH DAKOTA

BIG SKY SUBDIVISION  
 HOOK ST. PAGE 50 (1 & 2)  
 TRACT A



FIND. COR. LOT 2

1325.57'

S89°58'18" W

FIND. COR.

UNPLATTED PORTION OF NW<sup>1</sup>/<sub>4</sub>NE<sup>1</sup>/<sub>4</sub> SECTION 3, T1N, R8E, BHM

TRACT C  
 24.397 ACRES

AURORA DRIVE  
 N90°16'55" W

HOMESTEAD STREET  
 N89°51'34" E 1325.98'

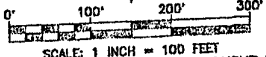
CARL AVENUE  
 N90°16'55" W

N00°09'38" W 1324.04'

802.89'

S00°11'18" E 1325.26'

800.29'



SCALE: 1 INCH = 100 FEET

UNPLATTED PORTION OF SE<sup>1</sup>/<sub>4</sub>NE<sup>1</sup>/<sub>4</sub> SECTION 3, T1N, R8E, BHM

RECEIVED

JAN 22 2004

Rapid City Planning Department

**LEGEND**

- ⊙ DENOTES SET 5/8" REBAR WITH SURVEY CAP MARKED "RLS 3977"
  - ◇ DENOTES FOUND 5/8" REBAR & CAP RLS 3977
  - DENOTES FOUND SURVEY MONUMENT
- BASIS OF BEARING: PER PREVIOUSLY RECORDED PLAT(S).

**CURVE TABLE**

NUMBER	RADIUS	DEFLECTION ANGLE	ARC LENGTH	TANGENT	CHORD BEARING	CHORD LENGTH
C1	200.00	47°20'54"	165.28	87.69	N23°57'22" W	160.61
C2	200.00	47°20'54"	165.28	87.69	N23°57'22" W	160.61
C3	200.00	47°20'54"	143.79	76.28	S23°57'22" E	139.73
C4	228.00	47°20'54"	186.76	99.08	S23°57'22" E	181.49
C5	228.00	47°20'54"	143.79	76.28	S23°57'22" E	139.73
C6	228.00	15°06'34"	59.60	29.87	S07°50'12" E	59.43
C7	228.00	32°14'21"	127.17	65.31	S31°30'39" E	125.48

**SHORT COURSE TABLE**

NUMBER	DIRECTION	DISTANCE
L1	S44°47'19" W	14.12'
L2	S45°12'41" E	14.16'
L3	N44°43'05" E	14.14'
L4	S45°16'55" E	14.14'
L5	S44°43'05" W	14.14'
L6	N45°16'55" W	14.14'
L7	N44°47'19" E	14.12'
L8	N45°12'41" W	14.16'
L9	S89°51'34" W	12.50'
L10	S00°06'26" E	14.50'
L11	S89°51'34" W	12.50'
L12	S00°06'26" E	14.50'
L13	S89°51'34" W	12.50'
L14	S00°06'26" E	14.50'
L15	N89°51'34" E	12.50'
L16	N00°06'26" W	14.50'
L17	N89°51'34" E	12.50'

RECEIVED  
 OCT 1

- NOTES:**
- MINOR DRAINAGE AND UTILITY EASEMENTS ARE HEREBY ESTABLISHED BY WIDE-ON THE INTERIOR SIDE-OF ALL LOT LINES AND RIGHT-OF-WAY, EXCEPT WHERE MAJOR DRAINAGE EASEMENTS ARE INDICATED.
  - TOTAL PLATTED AREA: 44.238 ACRES  
 LOTS AND TRACTS A & B: 14.880 ACRES  
 TRACT C (SCHOOL): 24.397 ACRES  
 DEDICATED PUBLIC RIGHT-OF-WAY: 4.861 ACRES
  - ANY MAJOR DRAINAGE EASEMENT SHOWN HEREOF SHALL BE KEPT FREE OF ALL OBSTRUCTIONS, INCLUDING BUT NOT LIMITED TO BUILDINGS, WALLS, FENCES, HEDGES, TREES, AND SHRUBS. THESE EASEMENTS GRANT TO ALL PUBLIC AUTHORITIES THE RIGHT TO CONSTRUCT, MAINTAIN, REPAIR AND REPLACE SUCH IMPROVEMENTS AND STRUCTURES AS IT DEEMS EXPEDIENT TO FACILITATE DRAINAGE FROM ANY SOURCE.
  - NON-ACCESS EASEMENTS ARE HEREBY ESTABLISHED ALONG THE FIRST FIFTY FEET OF CORNER LOTS OR AS INDICATED HEREOF.