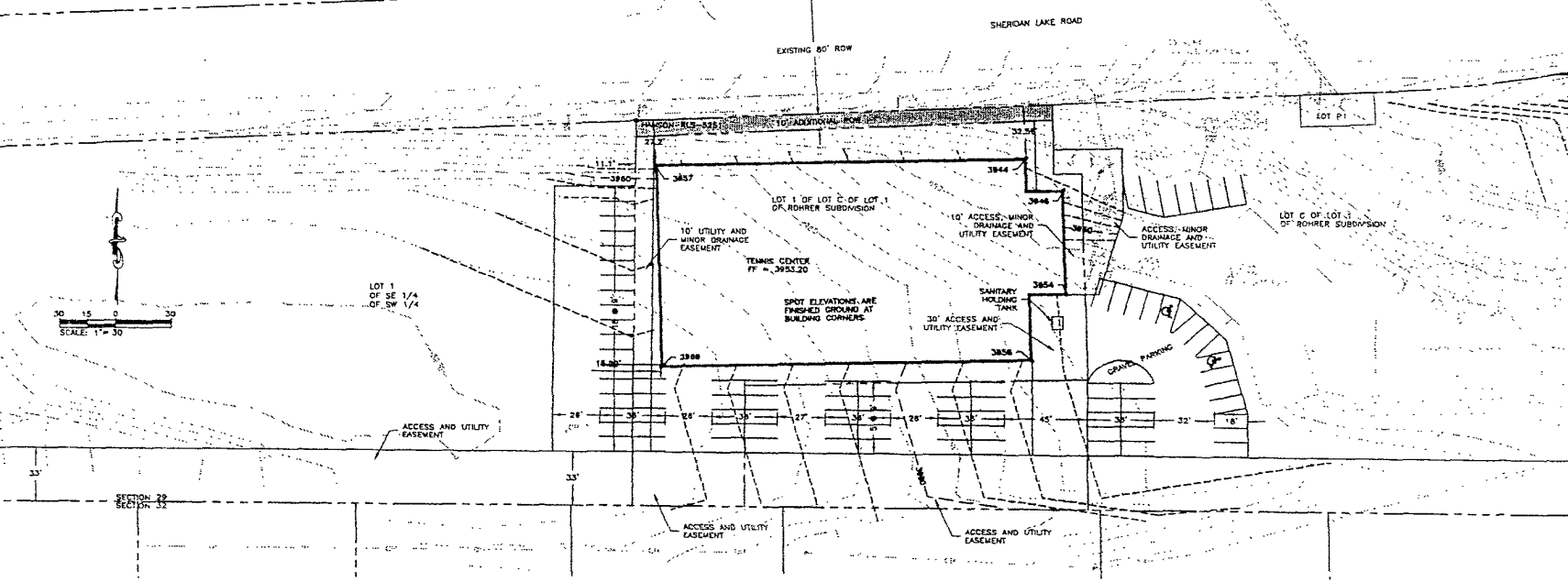


CP 3
5/8" REBAR
N = 5000.00
E = 5000.00
ELEV = 3982.40

CP 1
5/8" REBAR
N = 4846.42
E = 4935.08
ELEV = 3989.53

PARKING REQUIREMENTS
FITNESS CENTER/DAYCARE = 72 SPACES
TENNIS CENTER = 10 SPACES
82 SPACES
PARKING SHOWN = 85 SPACES

04PL039



EXISTING LEGEND

- FLAG POLE
- BOREHOLE
- MONITORING WELL
- PARKING METER
- TRAFFIC SIGNAL
- DELEGATOR
- CABLE TV OR TELEPHONE RISER
- CONFERIOUS TREE
- DECIDUOUS TREE
- BUSH
- HEDGE/TREE LINE
- 3 POLE SIGN
- 2 POLE SIGN
- 1 POLE SIGN
- MAILBOX
- POST / BOLLARD
- WAND MYSRANT
- WATER METER
- FIRE HYDRANT
- GATE W-LINE
- BUTTERFLY VALVE

- POST INDICATOR VALVE (P.I.V.)
- SPRINKLER HEAD
- CURB STOP
- TELEPHONE MANHOLE
- STORM SEWER MANHOLE
- SANITARY SEWER MANHOLE
- CLEAN OUT
- SET PROPERTY CORNER
- FOUND PROPERTY CORNER
- CONTROL POINT
- RIGHT-OF-WAY MARKER
- GAS VALVE
- GAS METER
- GAS MANHOLE
- ELECTRICAL MANHOLE
- LIGHT POLE
- GUY WIRE ANCHOR
- POWER POLE
- TYPE "E" INLET
- TYPE "B" INLET
- STORM SEWER JUNCTION BOX
- STUMP

- TELEPHONE LINE
- OVERHEAD LINES (P.W. LINE 60')
- POWER LINE
- GAS LINE
- FIBEROPTIC LINE
- CABLE TV LINE
- TRAFFIC CONDUIT LINE
- CHAINLINK FENCE
- BARBED WIRE FENCE
- WOOD FENCE
- GUARDRAIL
- SANITARY SEWER LINE
- FOR PIPES 18" AND LARGER
- STORM SEWER LINE
- FOR PIPES 18" AND LARGER
- WATER LINE
- FOR PIPES 18" AND LARGER
- PROPERTY LINE
- MAJOR CONTOUR
- MINOR CONTOUR

PROPOSED LEGEND

- 100--- MAJOR CONTOUR
- MINOR CONTOUR

UTILITIES

THE INFORMATION ON THESE DRAWINGS CONCERNING THE TYPE, SIZE, AND LOCATION OF UTILITIES HAS BEEN SHOWN BASED UPON THE BEST INFORMATION AVAILABLE. THE CONTRACTOR IS RESPONSIBLE FOR DETERMINING THE EXACT LOCATION OF ALL UTILITIES PRIOR TO BEGINNING CONSTRUCTION. THE CONTRACTOR IS RESPONSIBLE FOR PROTECTING ALL EXISTING UTILITIES IN PLACE. CONTRACTOR SHALL COORDINATE ALL RELOCATIONS WITH THE UTILITY COMPANIES. ELECTRICAL, TELEPHONE, TELEVISION, AND GAS UTILITIES MAY BE ADJUSTED AND/OR RELOCATED BY THE RESPECTIVE UTILITY COMPANIES.

UTILITIES:
SOUTH DAKOTA ONE CALL
1-800-781-7474

(ELECTRIC)
BLACK HILLS POWER AND LIGHT COMPANY
409 DEADWOOD AVENUE
(605) 342-3200

(FIBER OPTIC)
BLACK HILLS FIBERCOM
609 DEADWOOD AVENUE
(605) - 771-2000

(GAS)
MONTANA-DAKOTA UTILITIES
705 KANSAS CITY STREET
(605) 342-0162

(TELEVISION)
MIDCONTINENT COMMUNICATIONS
2497 W CHICAGO STREET
(605) 348-7444

(TELEPHONE)
QUEST (URWEST)
(605) 573-1311

RECEIVED

MAR 12 2004

Rapid City Growth
Management Department

NO	DATE	REVISION
1	11-11-04	NEW LOT

NAME	SCALE	AS SHOWN	DATE	BY	CHKD	DATE

Ferber Engineering Company, Inc.
1370 Government Center, Rapid City, SD 57701
251 East Washington St., Rapid City, SD 57701

SITE PLAN
ATHLETIC CLUB TENNIS CENTER

PROJECT NO.
J03-117
SHEET NO.
1/1