

EXHIBIT B

04VE004

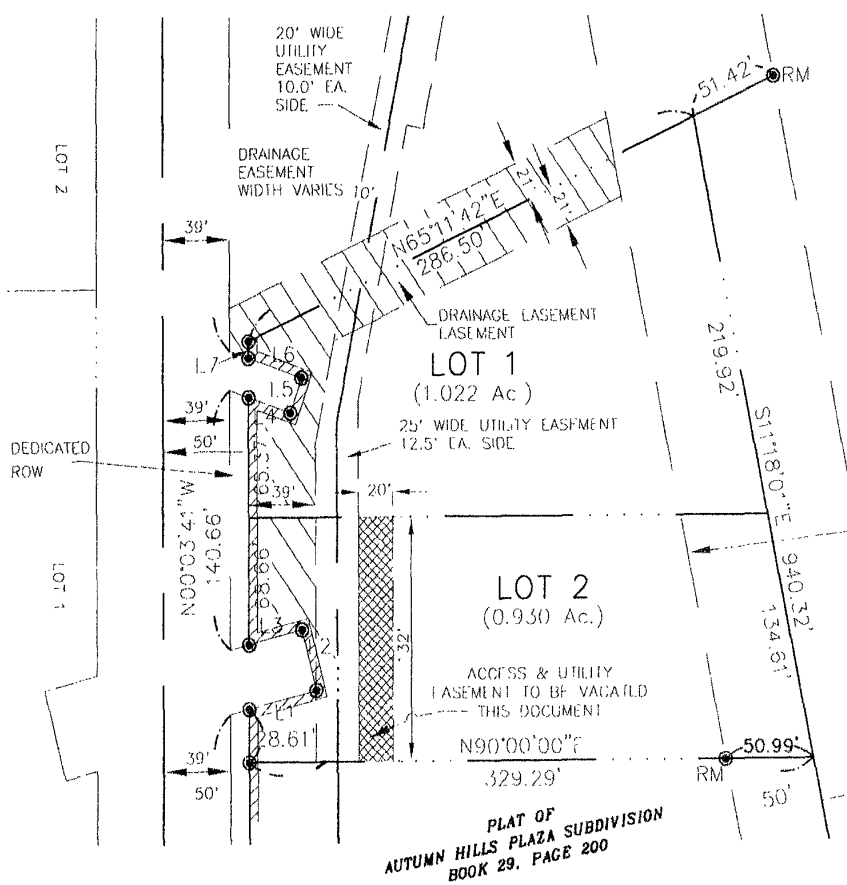
VACATION OF EXISTING ACCESS AND UTILITY EASEMENT

LOT 2 OF AUTUMN HILLS PLAZA SUBDIVISION

LOCATED IN THE NW $\frac{1}{4}$ SW $\frac{1}{4}$ SW $\frac{1}{4}$ NW $\frac{1}{4}$

SECTION 22 T1N, R7E, B1M

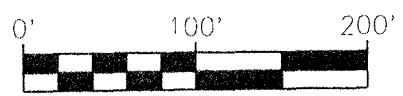
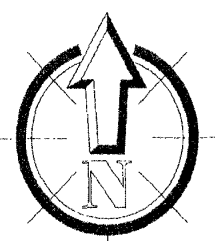
RAPID CITY, PENNINGTON COUNTY, SOUTH DAKOTA.



SHORT COURSE TABLE

L1	N75°43'54"E	40.56'
L2	N14°16'06"W	33.66'
L3	S75°43'54"W	32.04'
L4	S70°48'07"E	25.86'
L5	N19°11'53"E	19.99'
L6	N70°48'07"W	32.85'
L7	N00°03'41"W	8.91'

EXISTING 100' WIDE PERMANENT DRAINAGE EASEMENT (BOOK 78, PAGES 2491-2493)



SCALE: 1 INCH = 100 FEET



D.D.I.
DREAM DESIGN INTERNATIONAL, INC.
 PROFESSIONAL STRUCTURAL & CIVIL ENGINEERING CONSULTANTS
 528 KANSAS CITY STREET, SUITE 4, RAPID CITY, SD 57701
 PH. 605-346-0536 FAX. 605-346-0545 EMAIL: engineers@dreamdesigninc.com