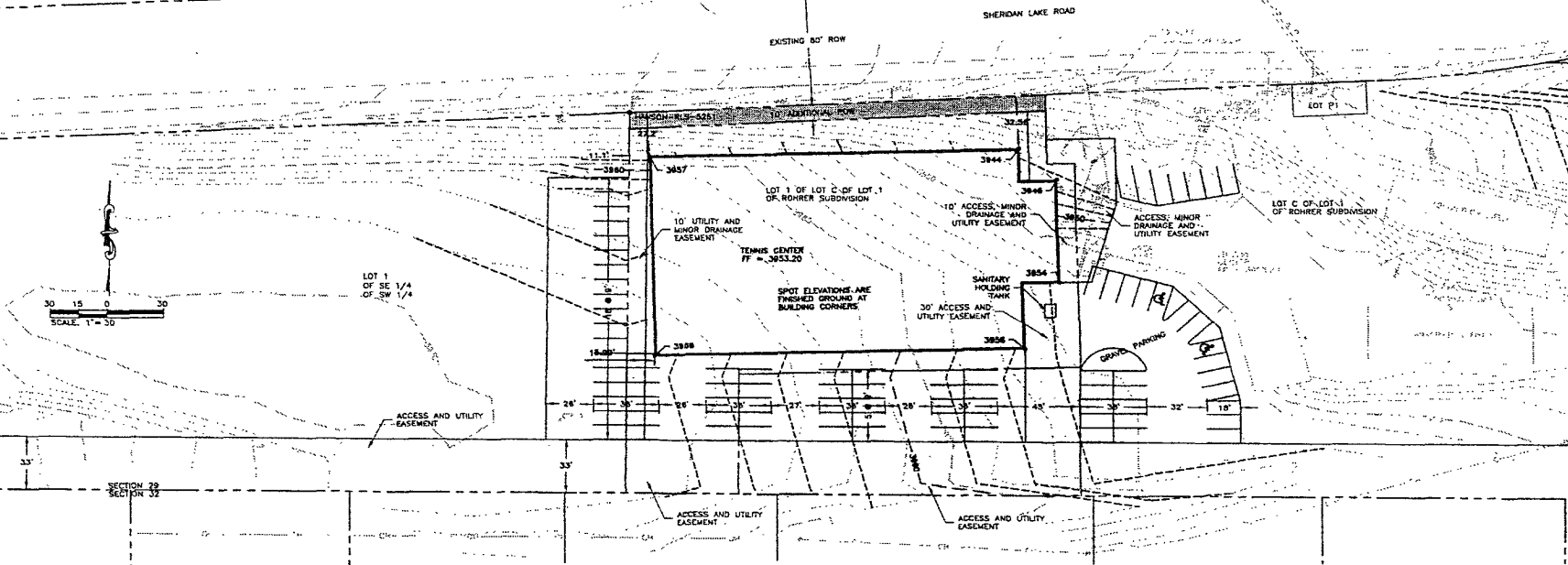


04SV020

CP 3
5/8" REBAR
N = 5000.00
E = 5000.00
ELEV = 3892.40

CP 1
5/8" REBAR
N = 4846.42
E = 4883.86
ELEV = 3889.55

PARKING REQUIREMENTS
FITNESS CENTER/DAYCARE = 72 SPACES
TENNIS CENTER = 10 SPACES
55 SPACES
PARKING SHOWN = 55 SPACES



EXISTING LEGEND

- FLAG POLE
- BOREHOLE
- MONITORING WELL
- PARKING METER
- TRAFFIC SIGNAL
- DELINEATOR
- CABLE TV OR TELEPHONE RISER
- CONIFEROUS TREE
- DECIDUOUS TREE
- BUSH
- HEDGE/TREE LINE
- 3 POLE SIGN
- 2 POLE SIGN
- 1 POLE SIGN
- MAILBOX
- POST / BOLLARD
- YARD HYDRANT
- WATER METER
- FIRE HYDRANT
- GATE VALVE
- BUTTERFLY VALVE
- POST INDICATOR VALVE (P.I.V.)
- SPRINKLER HEAD
- WATER MANHOLE
- CURB STOP
- TELEPHONE MANHOLE
- STORM SEWER MANHOLE
- SANITARY SEWER MANHOLE
- CLEAN OUT
- SET PROPERTY CORNER
- FOUND PROPERTY CORNER
- CONTROL POINT
- RIGHT-OF-WAY MARKER
- GAS VALVE
- GAS METER
- GAS MANHOLE
- ELECTRICAL MANHOLE
- LIGHT POLE
- GUY WIRE ANCHOR
- POWER POLE
- YARD HYDRANT
- TYPE "E" INLET
- TYPE "B" INLET
- STORM SEWER JUNCTION BOX
- STUMP

- TELEPHONE LINE
- OVERHEAD LINES (POWER LINES)
- POWER LINE
- GAS LINE
- FIBEROPTIC LINE
- CABLE TV LINE
- TRAFFIC CONDUIT LINE
- CHAINLINK FENCE
- BARBED WIRE FENCE
- WOOD FENCE
- GUARDRAIL
- SANITARY SEWER LINE
- FOR PIPES 18" AND LARGER
- STORM SEWER LINE
- FOR PIPES 18" AND LARGER
- WATER LINE
- FOR PIPES 18" AND LARGER
- PROPERTY LINE
- MAJOR CONTOUR
- MINOR CONTOUR

PROPOSED LEGEND

- 100 --- MAJOR CONTOUR
- --- MINOR CONTOUR

UTILITIES

THE INFORMATION ON THESE DRAWINGS CONCERNING THE TYPE, SIZE, AND LOCATION OF UTILITIES HAS BEEN SHOWN BASED UPON THE BEST INFORMATION AVAILABLE. THE CONTRACTOR IS RESPONSIBLE FOR DETERMINING THE EXACT LOCATION OF ALL UTILITIES PRIOR TO BEGINNING CONSTRUCTION. THE CONTRACTOR IS RESPONSIBLE FOR PROTECTING ALL EXISTING UTILITIES IN PLACE. CONTRACTOR SHALL COORDINATE ALL RELOCATIONS WITH THE UTILITY COMPANIES.

ELECTRICAL, TELEPHONE, TELEVISION, AND GAS UTILITIES MAY BE ADJUSTED AND/OR RELOCATED BY THE RESPECTIVE UTILITY COMPANIES.

UTILITIES:
SOUTH DAKOTA ONE CALL
1-800-781-7474

(ELECTRIC)
BLACK HILLS POWER AND LIGHT COMPANY
459 DEADWOOD AVENUE
(605) 342-3200

(FIBER OPTIC)
BLACK HILLS FIBERCOM
809 DEADWOOD AVENUE
(605) - 721-2000

(GAS)
SOUTH DAKOTA UTILITIES
703 KANSAS CITY STREET
(605) 342-0180

(TELEVISION)
MIDCONTINENT COMMUNICATIONS
2497 W CHICAGO STREET
(605) 348-7444

(TELEPHONE)
QUEST (LOWEST)
(605) 573-1311

RECEIVED

MAR 12 2004

Rapid City Growth Management Department

| | | | | | | | | | |
|----------|-------|-----|------|------|-----|------|------|-----|------|
| APPROVED | | | | | | | | | |
| REVISION | | | | | | | | | |
| NO | DATE | BY | CHK | DATE | BY | CHK | DATE | BY | CHK |
| 1 | 11-04 | NEW | LOT | | | | | | |
| DATE | BY | CHK | DATE | BY | CHK | DATE | BY | CHK | DATE |
| DATE | BY | CHK | DATE | BY | CHK | DATE | BY | CHK | DATE |

Ferber Engineering, Inc.
1701 East Walcott P. O. Box 100, Rapid City, SD 57701
Tel: 605-342-1111

SITE PLAN

ATHLETIC CLUB TENNIS CENTER

PROJECT NO. J03-117

SHEET NO. 1/1