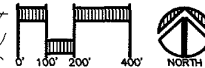


04PL035

Red Rock Meadows

Rapid City, South Dakota

PROJECT NO.: R03-184
FILE NAME: DD1-redrockmead.dwg
DATE: FEB. 13, 2004



DEVELOPMENT INFORMATION:

SUBMITTAL: LAYOUT PLAN
 SUBDIVISION: RED ROCK MEADOWS
 APPLICANT/OWNER: DON WARD & KEVIN SUNTRUCK
 6500 BRIDGEMOOR ROAD
 RAPID CITY, SD 57702
 LAND PLANNER: DESIGNWORKS INC. 605/394-0364
 EXISTING ZONING: A-1 GENERAL AGRICULTURE DISTRICT
 PROPOSED ZONING: PFD PLANNED RESIDENTIAL DEVELOPMENT
 TOTAL SITE AREA: 127.8 ACRES

LOW DENSITY RESIDENTIAL AREA:

- TOTAL RESIDENTIAL AREA: 127.8 ACRES
- TOTAL LOTS: 308 LOTS
- DENSITY: 2.40 LOTS/ACRE
- AVERAGE LOT SIZE: 0.31 ACRES
- MINIMUM LOT SIZE: 0.20 ACRES
- LAND USE: SINGLE FAMILY RESIDENTIAL

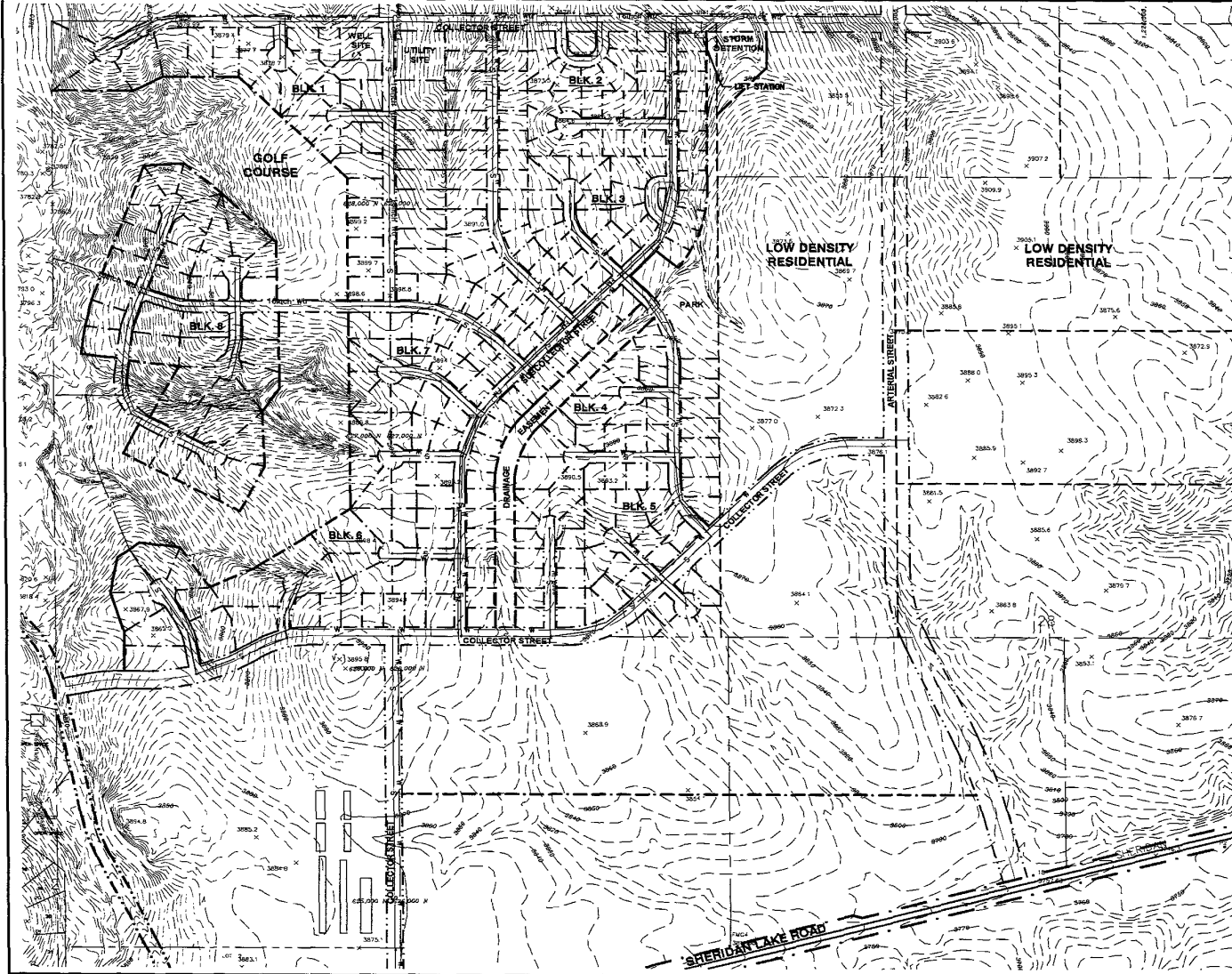
RECEIVED

MAR 10 2004

Rapid City Growth
Management Department



D.D.I.
DREAM DESIGN INTERNATIONAL, INC.
 PROFESSIONAL CIVIL & STRUCTURAL ENGINEERING CONSULTANTS
 526 KANSAS CITY ST., SUITE 4, RAPID CITY, SD 57701
 P.O. BOX 346-9028 FAX: 605-346-9049 EMAIL: en@dreamdesigninc.com



Red Rock Meadows

Rapid City, South Dakota

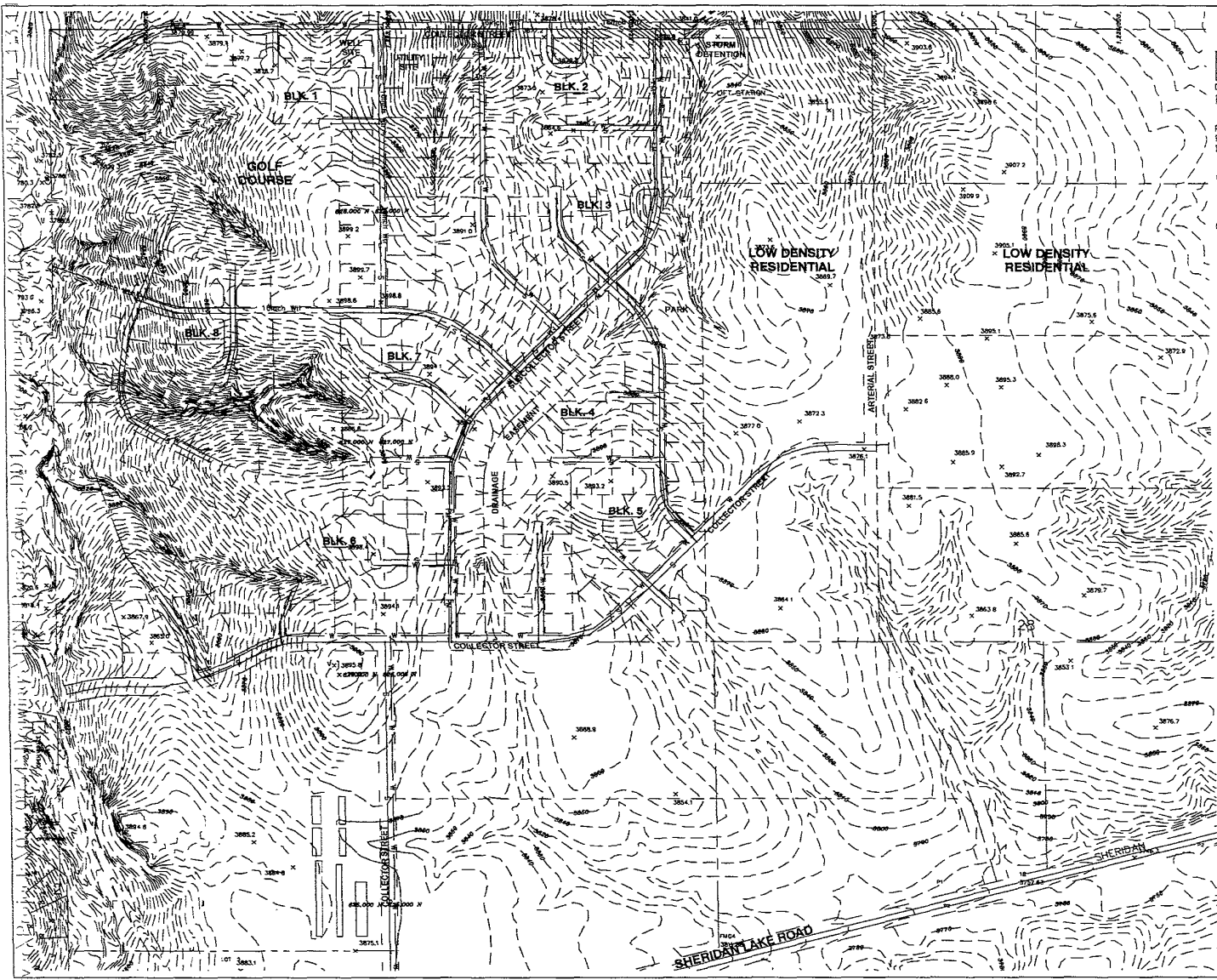
PROJECT NO.: R03-184
FILE NAME: DD1-redrockmead.dwg
DATE: FEB. 13, 2004



DEVELOPMENT INFORMATION:

SUBMITTAL: LAYOUT PLAN
SUBDIVISION: RED ROCK MEADOWS
APPLICANT/OWNER: DON WARD & KEVIN RUNTROCK
6520 BIRDALE ROAD
RAPID CITY, SD 57702
LAND PLANNER: DESIGNWORKS INC. 605/394-0394
EXISTING ZONING: A-1 GENERAL AGRICULTURE DISTRICT
PROPOSED ZONING: PRD PLANNED RESIDENTIAL DEVELOPMENT
TOTAL SITE AREA: 127.8 ACRES

- LOW DENSITY RESIDENTIAL AREA:**
- TOTAL RESIDENTIAL AREA: 127.8 ACRES
 - TOTAL YIELD: 226 LOTS
 - DENSITY: 2.40 LOTS/ACRE
 - AVERAGE LOT SIZE: 0.31 ACRES
 - MINIMUM LOT SIZE: 0.20 ACRES
 - LAND USE: SINGLE FAMILY RESIDENTIAL



D.D.I.
DREAM DESIGN INTERNATIONAL, INC.
PROFESSIONAL CIVIL & STRUCTURAL ENGINEERING CONSULTANTS
528 KANSAS CITY ST., SUITE 4, RAPID CITY, SD 57701
PH. 605-348-0538 FAX. 605-348-0545 EMAIL: engineers@dreamdesigninc.com