

LAYOUT PLAN
HANOVER DRIVE PROPERTY

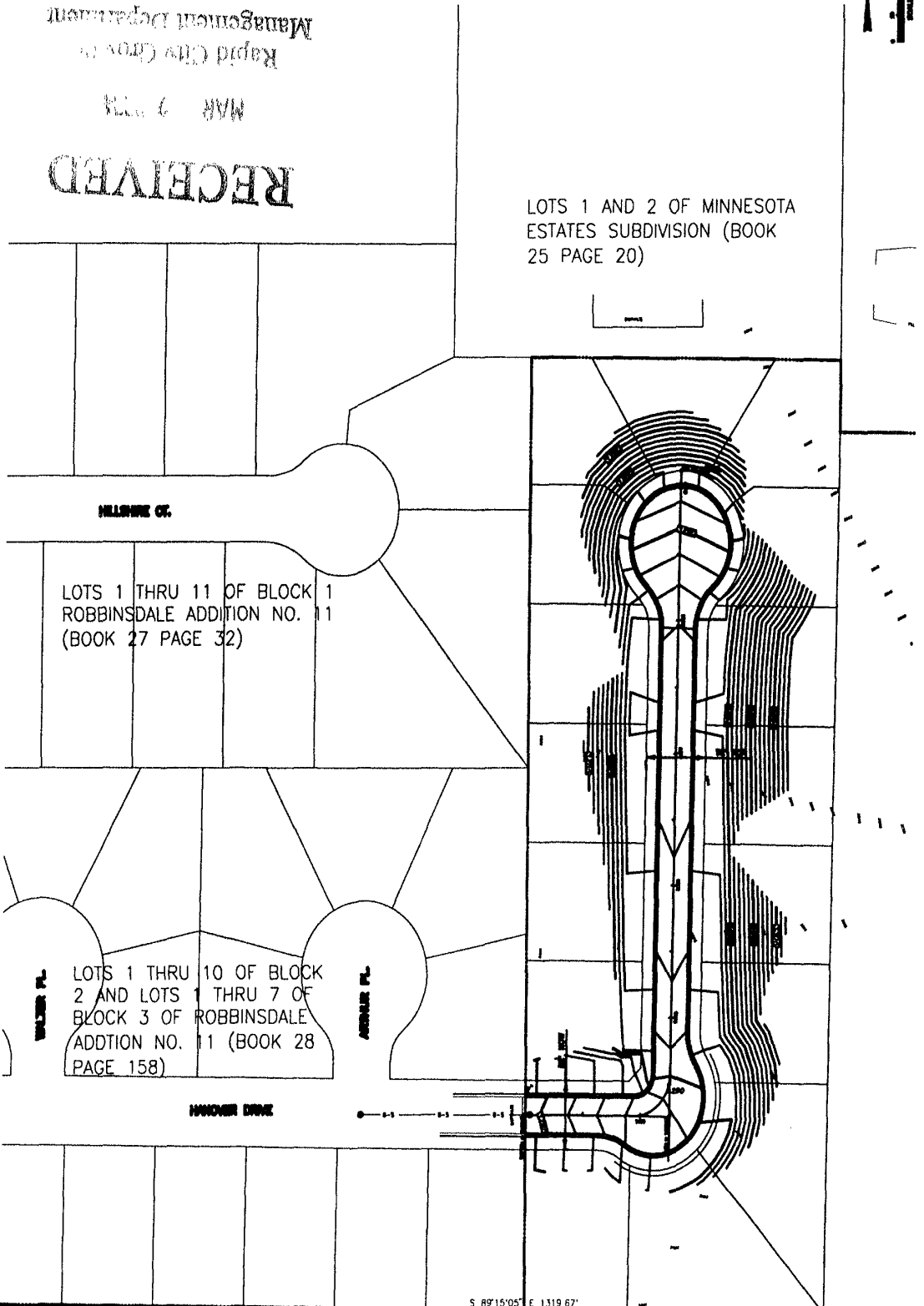
D.D.I. DREAM DESIGN INTERNATIONAL, INC.
 75 000-000-0000 FAX 754 000-0000
 1000 EAST PALM BLVD. SUITE 1000 WEST PALM BEACH, FL 33411
 1000 EAST PALM BLVD. SUITE 1000 WEST PALM BEACH, FL 33411

OWNER	STATE OF MINNESOTA
PROJECT NO.	1319 67
DATE	11/13/05
SCALE	AS SHOWN
BY	STATE OF MINNESOTA
CHECKED BY	STATE OF MINNESOTA
DATE	11/13/05
PROJECT	THE MEADOWS SUBDIVISION
LOT	1 AND 2
SECTION	1319 67

04PL028

RECEIVED
 MAR 7 2008
 Rapid City Council
 Management Department

LOTS 1 AND 2 OF MINNESOTA
ESTATES SUBDIVISION (BOOK
25 PAGE 20)



LOTS 1 THRU 11 OF BLOCK 1
ROBBINSDALE ADDITION NO. 11
(BOOK 27 PAGE 32)

LOTS 1 THRU 10 OF BLOCK 2
AND LOTS 1 THRU 7 OF
BLOCK 3 OF ROBBINSDALE
ADDITION NO. 11 (BOOK 28
PAGE 158)

S 8715'05" E 1319 67'