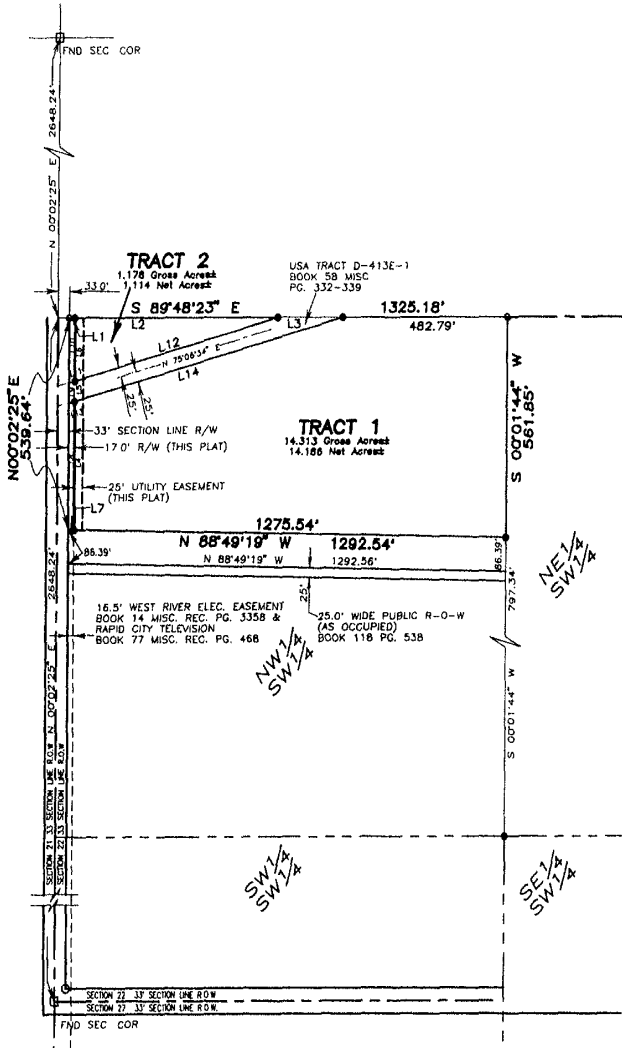


PLAT OF TRACT 1 and TRACT 2  
 LOCATED IN THE N $\frac{1}{2}$ NW $\frac{1}{4}$ SW $\frac{1}{4}$  OF SECTION 22, T2N, R8E, B.H.M.,  
 PENNINGTON COUNTY, SOUTH DAKOTA

04PL020



**LEGEND**

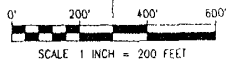
- DENOTES SET 5/8" REBAR WITH SURVEY CAP MARKED "RLS 3977"
  - DENOTES FOUND 5/8" REBAR & CAP RLS 3977
  - DENOTES FOUND SURVEY MONUMENT
- BASIS OF BEARING: ARLETH & ASSOCIATES

**SHORT COURSE TABLE**

NUMBER	DIRECTION	DISTANCE
L1	S 89°48'23" E	17.00'
L2	S 89°48'23" E	600.26'
L3	S 89°48'23" E	192.13'
L4	N 00°02'25" E	326.51'
L5	N 00°02'25" E	51.75'
L6	N 00°02'25" E	161.67'
L7	S 88°49'19" W	17.00'
L8	N 00°02'25" E	321.64'
L9	N 00°02'25" E	51.75'
L10	N 00°02'25" E	166.25'
L11	N 75°06'34" E	17.59'
L12	N 75°06'34" E	621.24'
L13	N 75°06'34" E	17.59'
L14	N 75°06'34" E	820.08'

**NOTES:**

1. TOTAL PLATTED AREA: 15.491 ACRES  
 DEDICATED PUBLIC RIGHT-OF-WAY THIS PLAT: 0.191 ACRES  
 (0.064 ACRES ± & 0.127 ACRES)
2. MINOR DRAINAGE AND UTILITY EASEMENTS ARE HEREBY ESTABLISHED 8" WIDE ON THE INTERIOR SIDE OF ALL LOT LINES AND RIGHT-OF-WAY. (EXCEPT WHERE MAJOR DRAINAGE EASEMENTS ARE LOCATED)
3. ANY MAJOR DRAINAGE EASEMENT SHOWN HEREON SHALL BE KEPT FREE OF ALL OBSTRUCTIONS INCLUDING BUT NOT LIMITED TO BUILDINGS, WALLS, FENCES, HEDGES, TREES, AND SHRUBS. THESE EASEMENTS GRANT TO ALL PUBLIC AUTHORITIES THE RIGHT TO CONSTRUCT, OPERATE, MAINTAIN, INSPECT AND REPAIR SUCH IMPROVEMENTS AND STRUCTURES AS IT DEEMS EXPEDIENT TO FACILITATE DRAINAGE FROM ANY SOURCE.
4. NON-ACCESS EASEMENTS ARE HEREBY ESTABLISHED AS INDICATED HEREON.



SCALE 1 INCH = 200 FEET