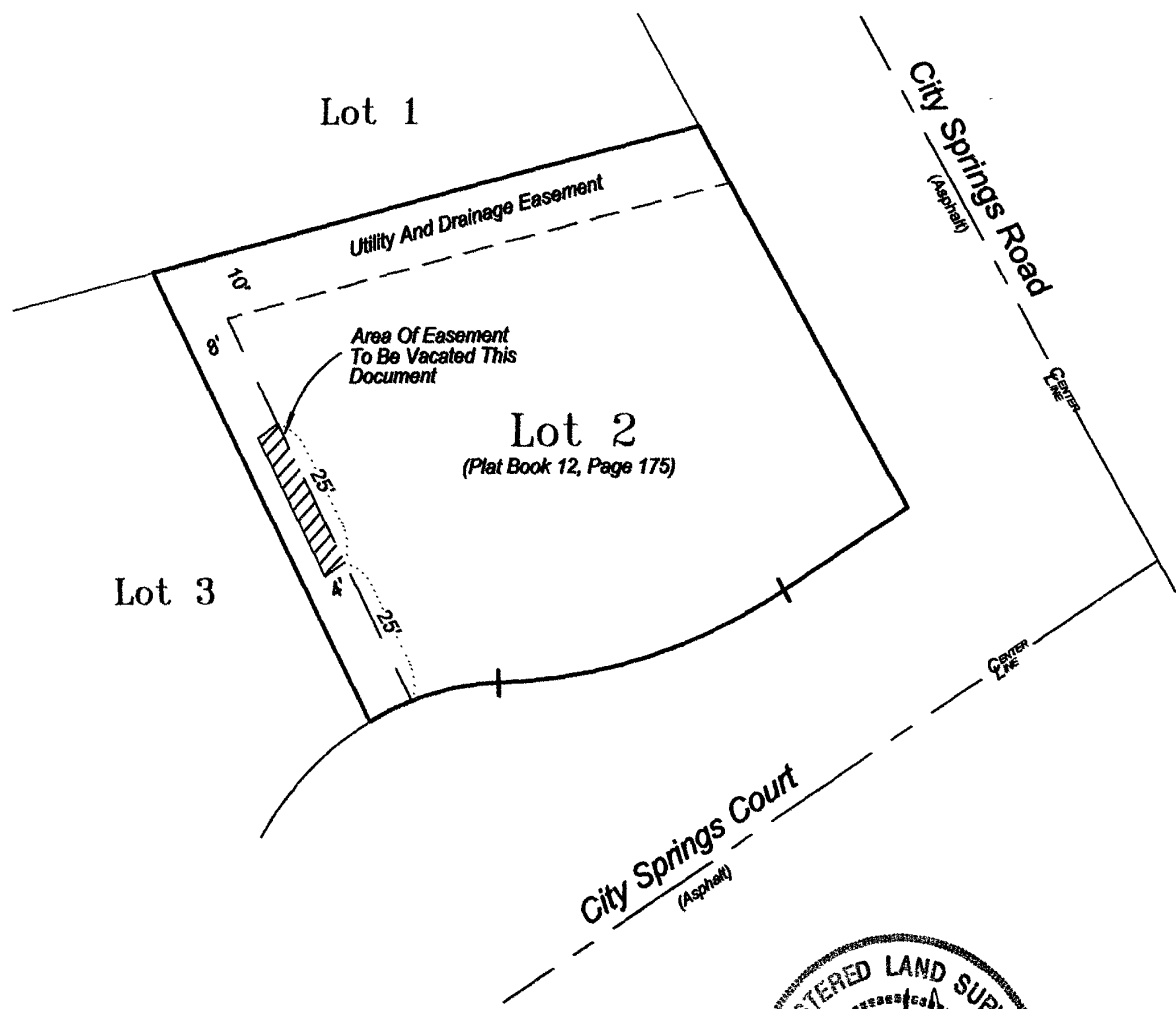
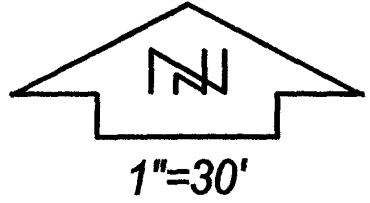


EXHIBIT A

04VE002

VACATION OF A PORTION OF UTILITY AND DRAINAGE EASEMENT
LOCATED IN LOT 2 OF CITY SPRINGS SUBDIVISION,
RAPID CITY, PENNINGTON COUNTY, SOUTH DAKOTA



PREPARED BY:
FISK LAND SURVEYING & CONSULTING ENGINEERS, INC.
P.O. BOX 8154, RAPID CITY, SD 57709 (605) 348-1538 -DATE-

NO. 03-12-05