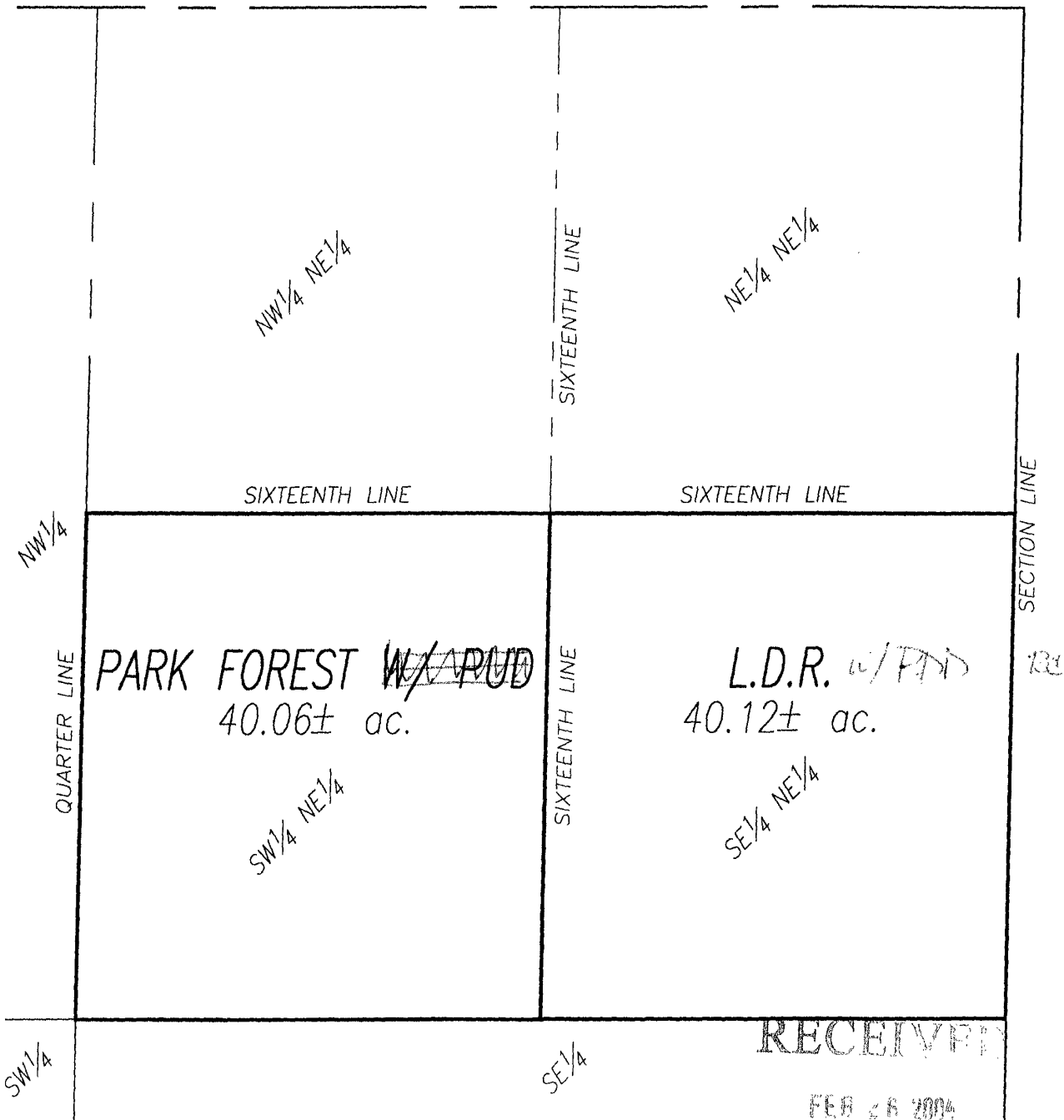


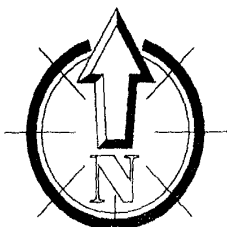
# RAINBOW RIDGE SUB.

## PROPOSED LAND USE

LOCATED IN THE S<sup>1</sup>/<sub>2</sub> NE<sup>1</sup>/<sub>4</sub>  
SECTION 23 T2N, R7E, BHM  
RAPID CITY, PENNINGTON COUNTY, S. DAK.



C:\p04\04RZ005-1169PR03.sbp (Height) by aut-plat-pre-mplan.dwg, 8:11 ZONE MAP, 2/26/2004 3:37:25 PM, 1:1



Rapid City Growth  
Management Department  
0' 400' 800'

SCALE: 1 INCH = 400 FEET

# RAINBOW RIDGE SUB.

## PROPOSED LAND USE

LOCATED IN THE SW $\frac{1}{4}$  NE $\frac{1}{4}$   
SECTION 23 T2N, R7E, BHM  
RAPID CITY, PENNINGTON COUNTY, S. DAK.

PARK FOREST ~~W/ARUD~~  
40.06 $\pm$  ac.

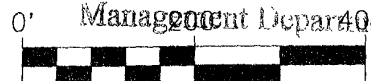
SW $\frac{1}{4}$  NE $\frac{1}{4}$

PC

RECEIVED

FEB 28 2004

Rapid City Growth  
Management Department



SCALE: 1 INCH = 200 FEET

