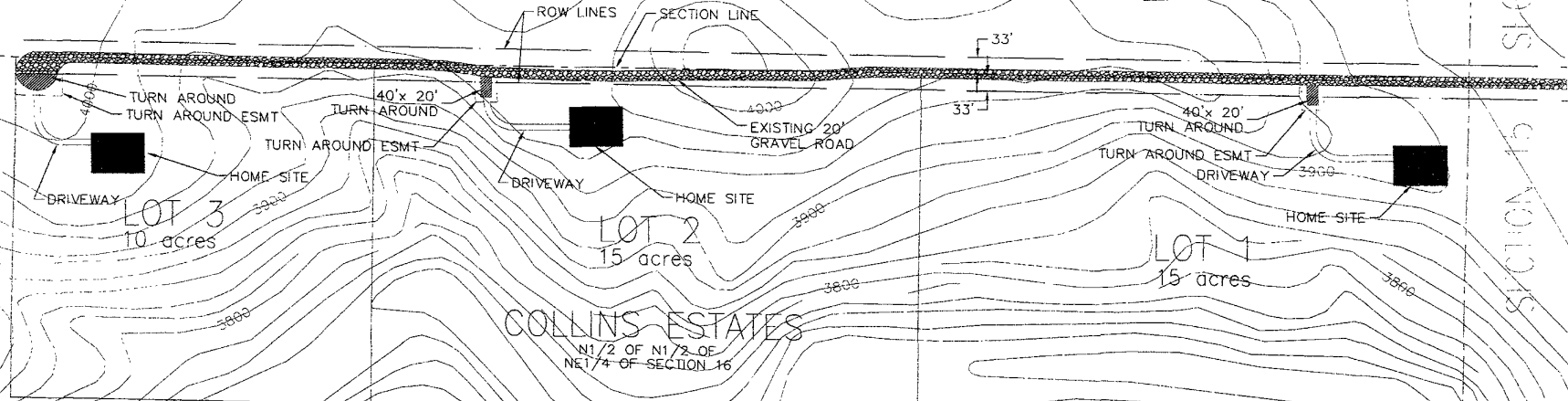


04PL018

SE 1/4 OF SECTION 9

SECTION 15 SECTION 16



COLLINS ESTATES
N 1/2 OF N 1/2 OF
NE 1/4 OF SECTION 16

D.D.I.
DREAM DESIGN INTERNATIONAL, INC.
PROFESSIONAL STRUCTURAL & CIVIL ENGINEERING CONSULTANTS
201 KANSAS CITY ST., SUITE 1, WARD CITY, MO 64116
PH: 816 248 0000 FAX: 816 248 0400 EMAIL: ddream@dreamdesign.com

PROJECT #	04 PL 018
DESIGNED BY	DDI
PROJECT DATE	2/27/04
DATE PLOTTED	2/27/04
DRAWN BY	DDI

COLLINS ESTATES
LAYOUT PLAN

SHEET
1
OF
1

RECEIVED

FEB 27 2004

