

LAYOUT PLAT OF TRACT A & TRACT B SUMMIT INDUSTRIAL PARK

(formerly Lots 1R Revised and 2R Revised of Summit Industrial Park.)
& THE BALANCE OF LOT X OF LOT H2
LOCATED IN NW1/4 OF SW1/4 OF
SECTION 22, T2N, R7E, BHM
RAPID CITY, PENNINGTON COUNTY, SOUTH DAKOTA

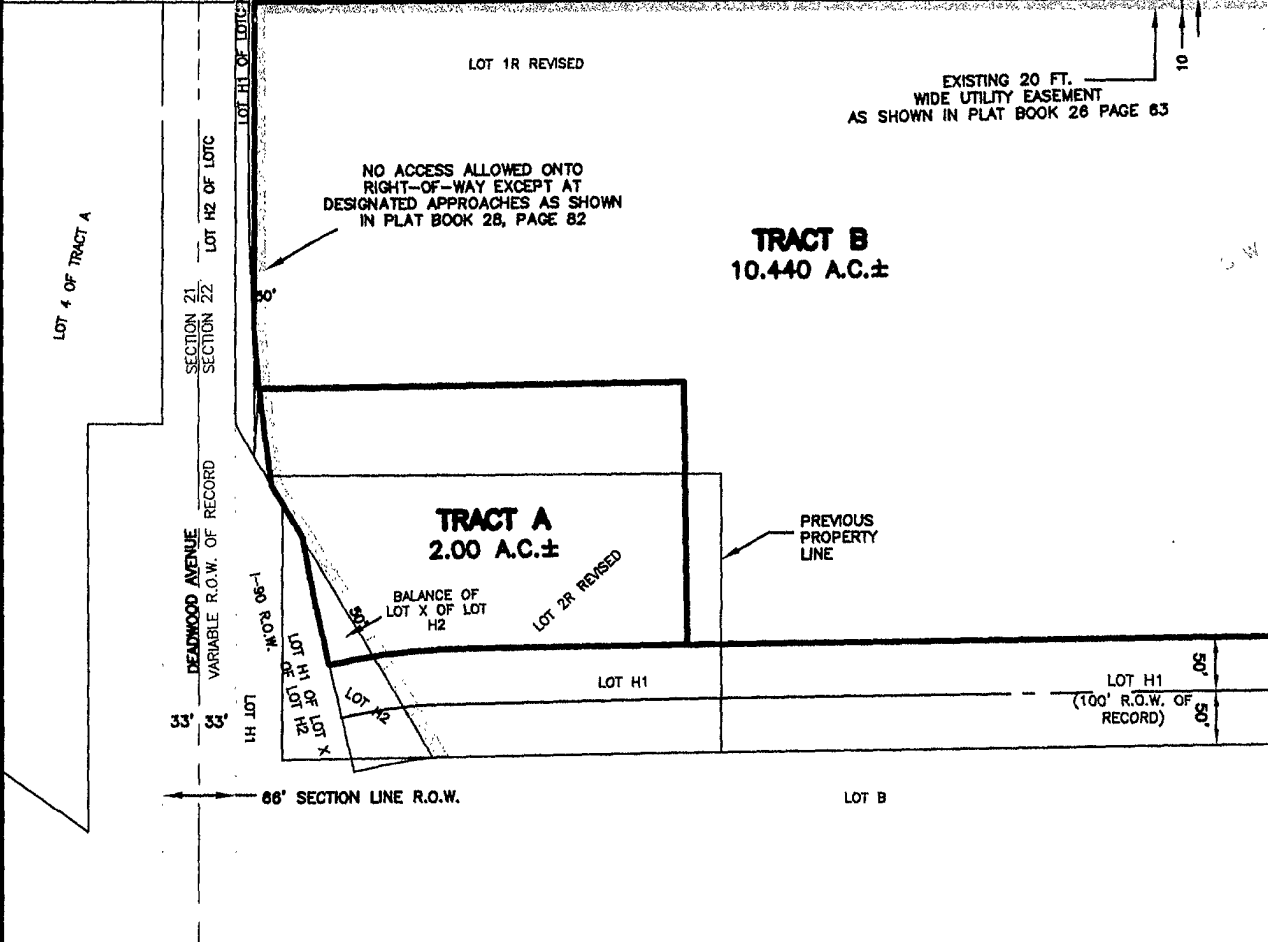
FEBRUARY 27, 2004



33' 33'

SECTION 1/4 LINE

SECTION 1/4 LINE



Renner Associates, LLC.

616 Sixth St. * Rapid City, SD 57701 * 605/721-7310
 FAX: 605/721-7313 * E-MAIL: Gary@RennerAssoc.com
 Spearfish Office * 605/717-0016