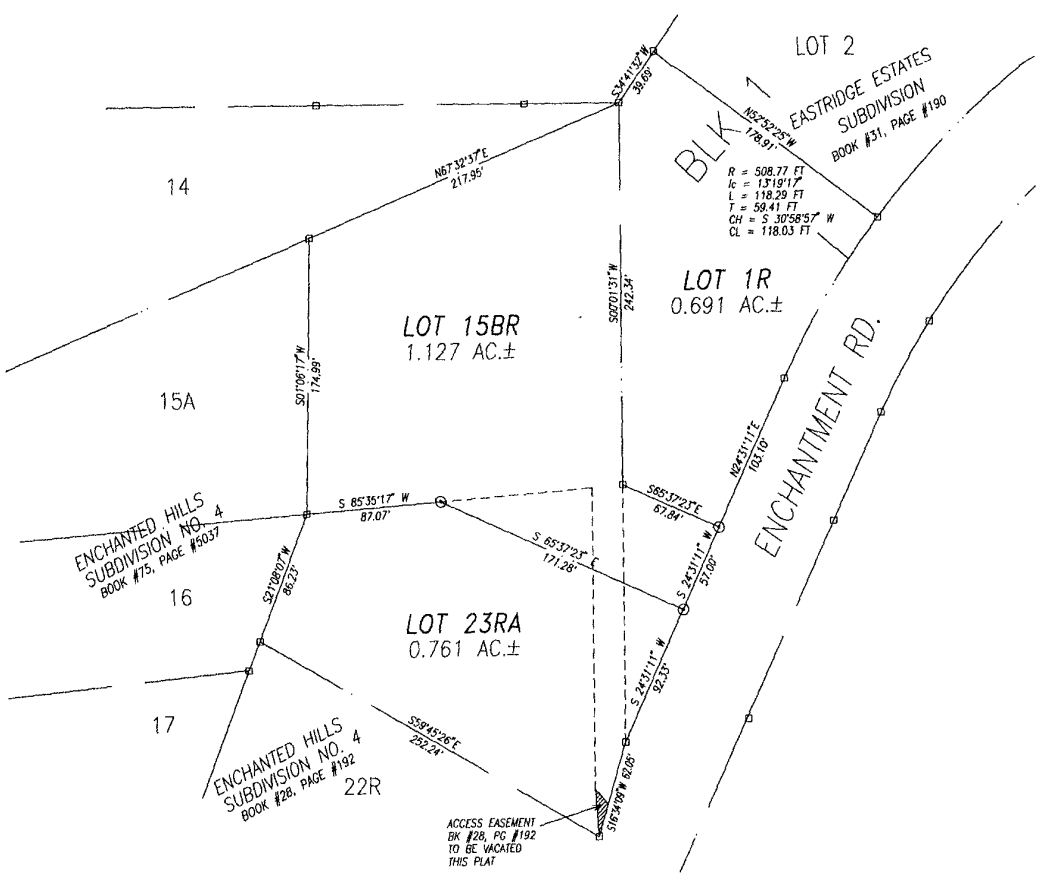


PLAT OF LOTS 15BR AND 23RA OF ENCHANTED HILLS SUBDIVISION NO. 4 (FORMERLY LOTS 15B AND 23R OF ENCHANTED HILLS SUBDIVISION NO.4) LOCATED IN THE S 1/2 NW 1/4 SECTION 24, T1N, R7E, BHM, RAPID CITY, PENNINGTON COUNTY, SOUTH DAKOTA; AND LOT 1R, BLOCK 1 OF EASTRIDGE ESTATES SUBDIVISION (FORMERLY LOT 1, BLOCK 1 OF EASTRIDGE ESTATES SUBDIVISION) LOCATED IN THE NW 1/4 OF SECTION 24, T1N, R7E, BHM, RAPID CITY, PENNINGTON COUNTY, SOUTH DAKOTA

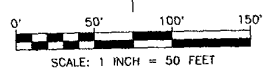


**NOTES:**

- 1. MINOR DRAINAGE AND UTILITY EASEMENTS ARE HEREBY ESTABLISHED 8' WIDE ON THE INTERIOR SIDE OF ALL LOT LINES. (EXCEPT WHERE MAJOR DRAINAGE EASEMENTS ARE LOCATED)
- 2. BUILDING SETBACK REQUIREMENTS ARE AS STATED IN ZONING AND/OR PLATING REGULATIONS

**LEGEND**

- FOUND CORNER MONUMENT
- ⊙ SET #5 REBAR WITH CAP MARKED LS 2554



**SURVEYOR'S CERTIFICATE**

STATE OF SOUTH DAKOTA COUNTY OF PENNINGTON ss

I, DAVID L. KALLEMEYN, REGISTERED LAND SURVEYOR No. 2554 IN THE STATE OF SOUTH DAKOTA, DO HEREBY CERTIFY THAT BEING SO AUTHORIZED, THE SURVEY AND WITHIN PLAT OF THE LAND SHOWN AND DESCRIBED HEREON WERE MADE UNDER MY RESPONSIBLE DIRECTION AND SUPERVISION AND THAT TO THE BEST OF MY KNOWLEDGE AND BELIEF THE WITHIN PLAT IS A CORRECT REPRESENTATION OF SAID SURVEY. ALL ACRE AREA AMOUNTS SHOWN ON THE WITHIN PLAT ARE TO BE CONSIDERED AS HAVING THE WORDS "MORE OR LESS" FOLLOWING DUE TO MATHEMATICAL "ROUNDING". IN WITNESS WHEREOF, I HERETO SET MY HAND AND OFFICIAL SEAL THIS \_\_\_\_ DAY OF \_\_\_\_\_ 20\_\_\_\_.

DAVID L. KALLEMEYN - REGISTERED LAND SURVEYOR No. 2554

**CERTIFICATE OF GROWTH MANAGEMENT DIRECTOR**

STATE OF SOUTH DAKOTA COUNTY OF PENNINGTON ss

I, GROWTH MANAGEMENT DIRECTOR OF THE CITY OF RAPID CITY, HAVE REVIEWED THIS PLAT AND HAVE FOUND IT TO CONFORM TO THE SUBDIVISION REQUIREMENTS OF CHAPTER 16.08.030 OF THE RAPID CITY MUNICIPAL CODE AND AS SUCH I HAVE APPROVED THIS PLAT AS A FINAL PLAT

DATED THIS \_\_\_\_ DAY OF \_\_\_\_\_ 20\_\_\_\_.

GROWTH MANAGEMENT DIRECTOR OF THE CITY OF RAPID CITY: \_\_\_\_\_

**CERTIFICATE OF FINANCE OFFICER**

STATE OF SOUTH DAKOTA COUNTY OF PENNINGTON ss

I, FINANCE OFFICER OF THE CITY OF RAPID CITY, DO HEREBY CERTIFY THAT ALL SPECIAL ASSESSMENTS WHICH ARE LIENS UPON THE WITHIN-DESCRIBED LANDS ARE FULLY PAID ACCORDING TO THE RECORDS OF MY OFFICE.

DATED THIS \_\_\_\_ DAY OF \_\_\_\_\_ 20\_\_\_\_.

FINANCE OFFICER OF THE CITY OF RAPID CITY: \_\_\_\_\_

**PREPARED BY:**



**D.D.I.**  
**DREAM DESIGN INTERNATIONAL, INC.**  
 PROFESSIONAL STRUCTURAL & CIVIL ENGINEERING CONSULTANTS  
 609 E. 24TH ST. SUITE 4, RAPID CITY, SD 57701  
 PH: 605-348-0834 FAX: 605-348-0846 EMAIL: [eng@dreamdesigninc.com](mailto:eng@dreamdesigninc.com)

DATE: 2/04  
 SCALE: 1" = 50'  
 DRAWN: RT

APPROVED: DLK