

TRACT A

CREEK DRIVE INDUSTRIAL PARK

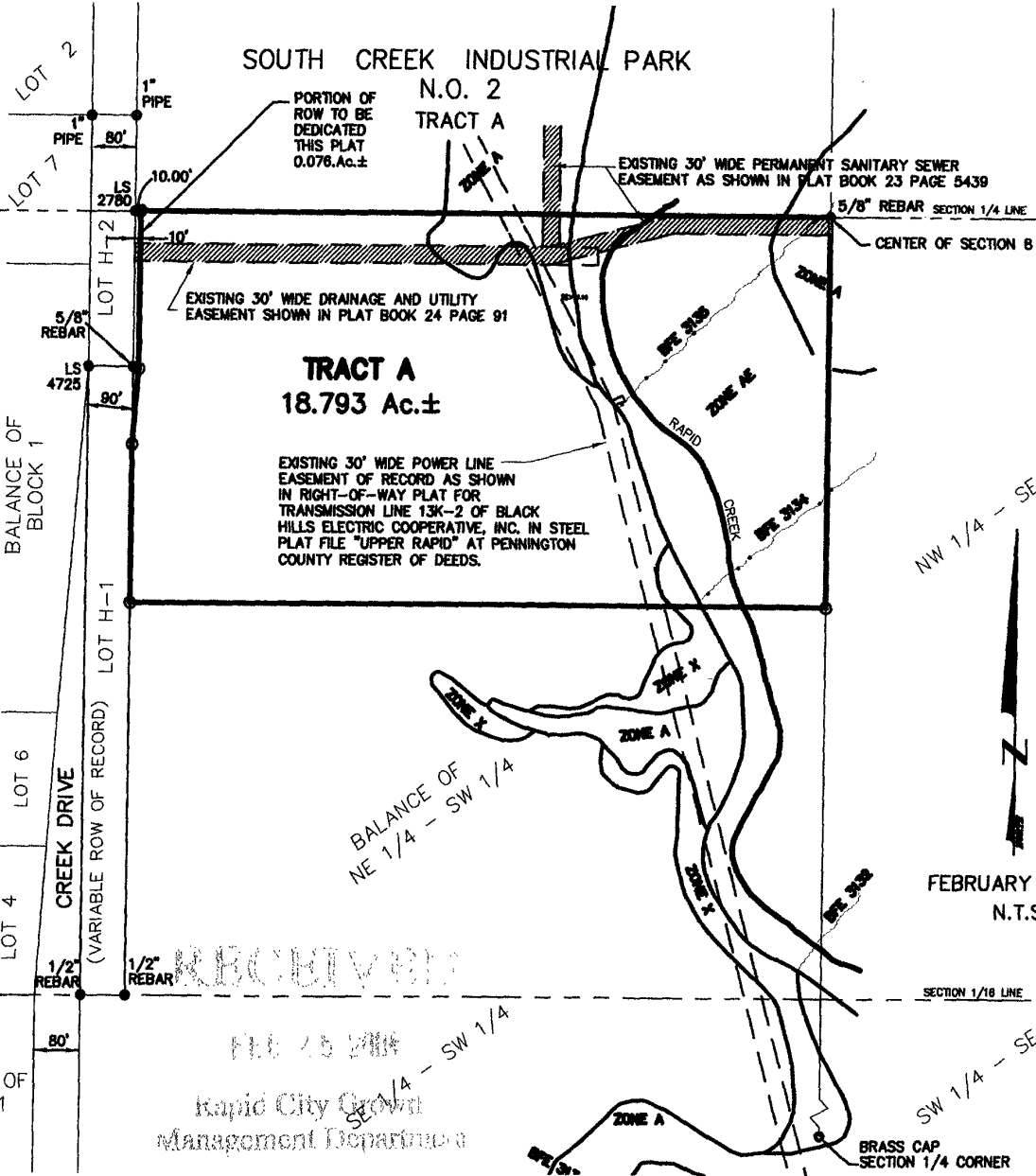
(formerly a portion of the NE1/4 of SW1/4)

LOCATED IN NE1/4 OF SW1/4

SECTION 8, T.1.N., R.8.E., B.H.M.,

RAPID CITY, PENNINGTON COUNTY, SOUTH DAKOTA

SOUTH CREEK INDUSTRIAL PARK
BLOCK 1



NW 1/4 - SE 1/4

FEBRUARY 25, 2004
N.T.S.

SECTION 1/16 LINE

SW 1/4 - SE 1/4

BRASS CAP
SECTION 1/4 CORNER

RECEIVED
FEB 25 2004
Rapid City Growth
Management Department



CITY HALL 1903

Renner Associates, LLC.

616 Sixth St. * Rapid City, SD 57701 * 605/721-7310
 FAX: 605/721-7313 * E-MAIL: Gary@RennerAssoc.com
 * Spearfish 605/717-0016 *