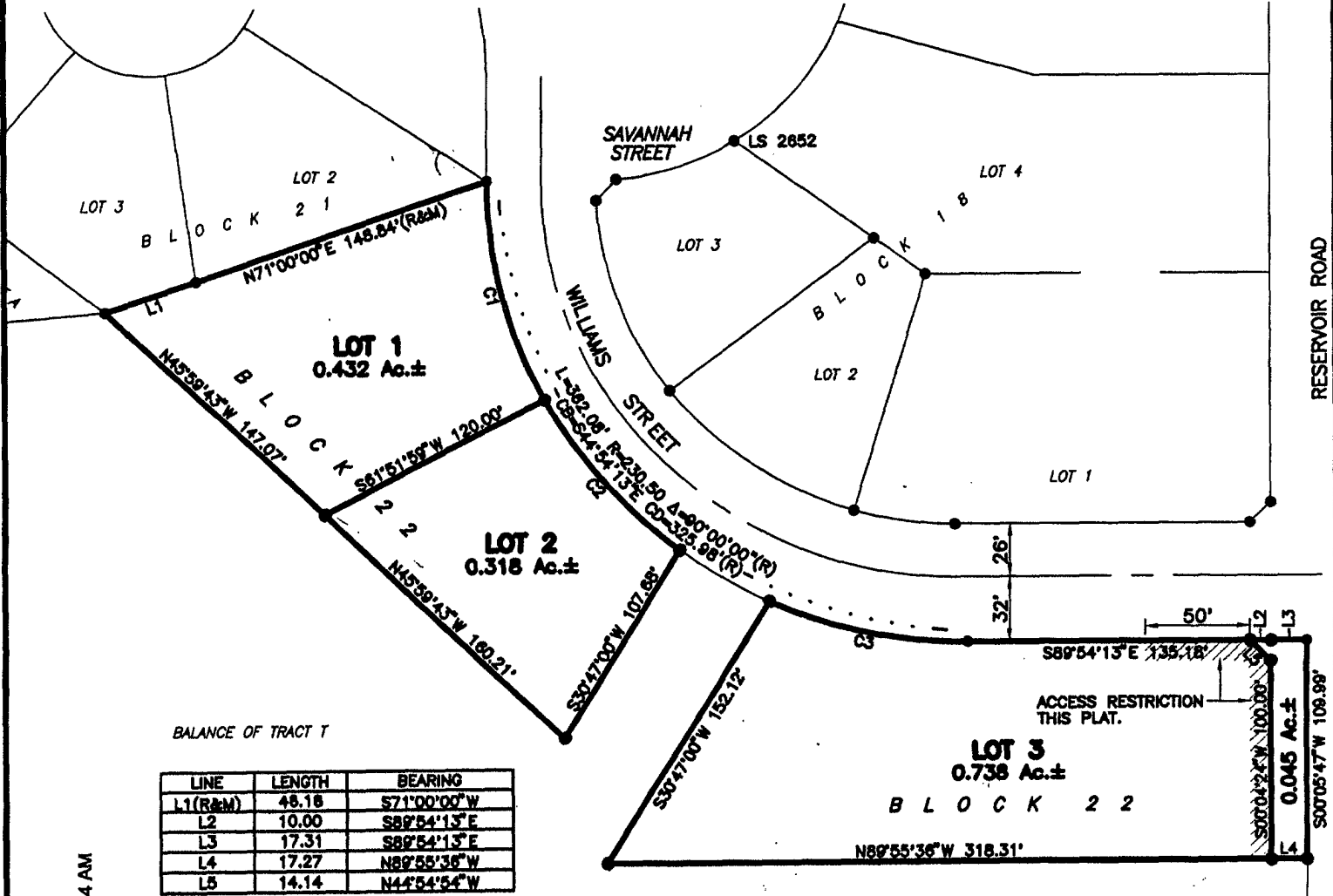


PLAT OF LOTS 1, 2, AND 3 OF BLOCK 22 TRAILWOOD VILLAGE

(formerly a portion of Tract T of Trailwood Village)
LOCATED IN THE E $\frac{1}{2}$ OF THE SE $\frac{1}{4}$
SECTION 10, T1N, R8E, BHM
PENNINGTON COUNTY, SOUTH DAKOTA



BALANCE OF TRACT T

LINE	LENGTH	BEARING
L1(R&M)	48.18	S71°00'00"W
L2	10.00	S89°54'13"E
L3	17.31	S89°54'13"E
L4	17.27	N89°55'36"W
L5	14.14	N44°54'54"W

CURVE	LENGTH	RADIUS	CHORD BEARING	CHORD DISTANCE
C1	113.57	230.50	S14°01'07"E	112.43
C2	100.00	230.50	S40°33'43"E	99.22
C3	98.41	230.50	S77°40'24"E	97.66

**AREA TO BE DEDICATED TO RESERVOIR
ROAD THIS PLAT: 0.045 Ac.±**

RECEIVED

JAN 23 2004

JANUARY 16, 2004
N.T.S.

Rapid City

Planning Department