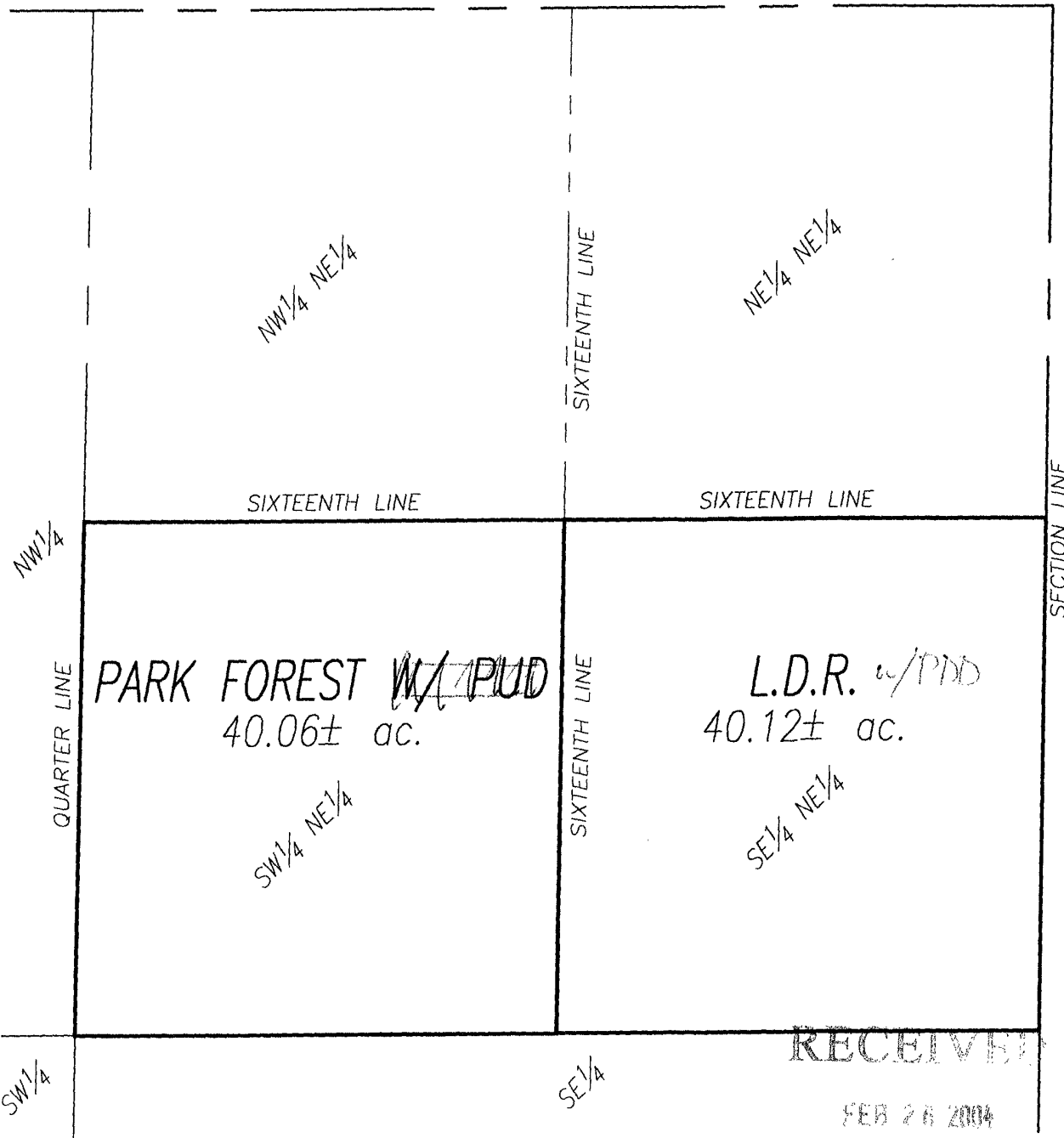


RAINBOW RIDGE SUB.

PROPOSED LAND USE

LOCATED IN THE S¹/₂ NE¹/₄
SECTION 23 T2N, R7E, BHM
RAPID CITY, PENNINGTON COUNTY, S. DAK.

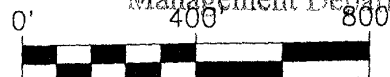


04CA004 - Rapid City Growth Management Department - 2/26/2004 - 3:31:25 PM

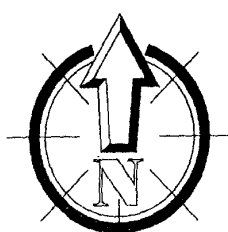
RECEIVED

FEB 26 2004

Rapid City Growth
Management Department



SCALE: 1 INCH = 400 FEET



RAINBOW RIDGE SUB.

04CA004

PROPOSED LAND USE

LOCATED IN THE SE $\frac{1}{4}$ NE $\frac{1}{4}$
SECTION 23 T2N, R7E, BHM
RAPID CITY, PENNINGTON COUNTY, S. DAK.

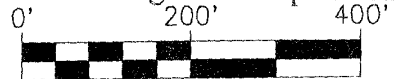
L.D.R. w/ PDD
40.12± ac.

SE $\frac{1}{4}$ NE $\frac{1}{4}$

RECEIVED

FEB 26 2004

Rapid City Growth
Management Department



SCALE: 1 INCH = 200 FEET

