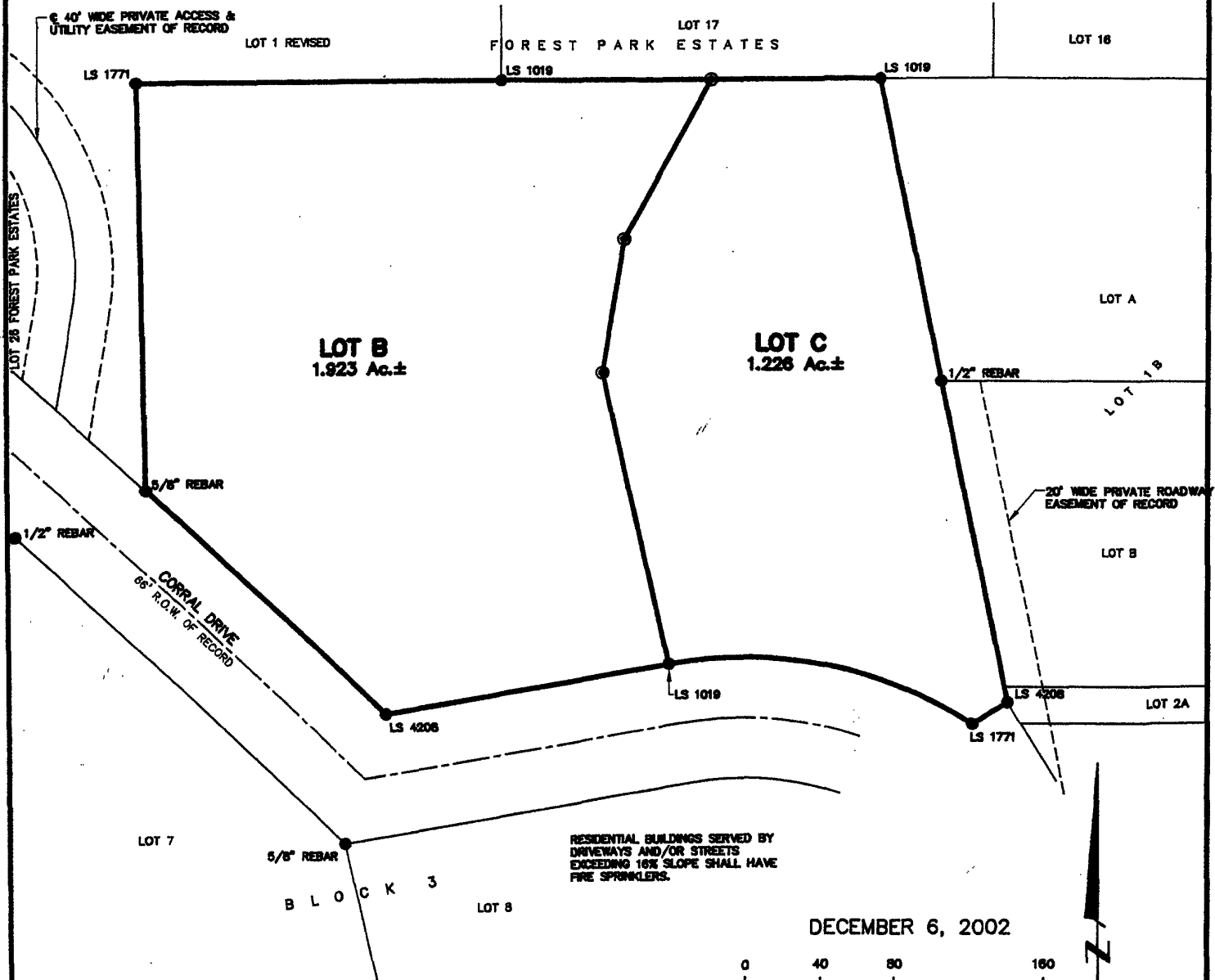


03PL035

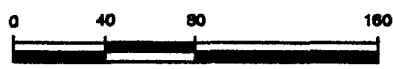
PLAT OF LOTS B & C OF LOT 6, MIRACLE PINES SUBDIVISION

(formerly a portion of Lot 6 of Miracle Pines Subdivision)
LOCATED IN THE NW¹/₄,
SECTION 21, T1N, R7E, BHM,
RAPID CITY, PENNINGTON COUNTY, SOUTH DAKOTA



RESIDENTIAL BUILDINGS SERVED BY
DRIVEWAYS AND/OR STREETS
EXCEEDING 16% SLOPE SHALL HAVE
FIRE SPRINKLERS.

DECEMBER 6, 2002



SCALE 1" = 80'



Renner & Sperlich Engineering Co.

616 Sixth St. * Rapid City, SD 57701 * 605/342-1191
FAX: 605/342-1405 * E-MAIL: RSEC@RAPIDNET.COM