

# EXHIBIT A

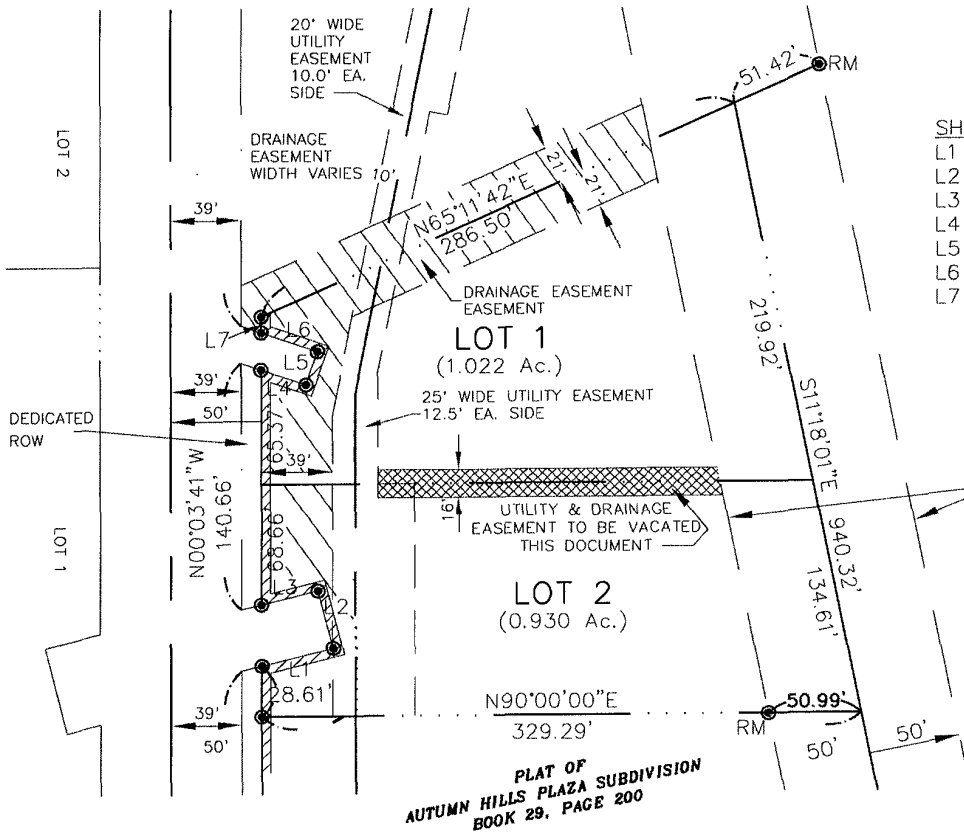
## VACATION OF EXISTING UTILITY AND DRAINAGE EASEMENT

LOTS 1 & 2 OF AUTUMN HILLS PLAZA SUBDIVISION

LOCATED IN THE NW $\frac{1}{4}$  SW $\frac{1}{4}$  SW $\frac{1}{4}$  NW $\frac{1}{4}$

SECTION 22 T1N, R7E, BHM

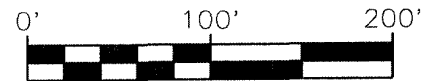
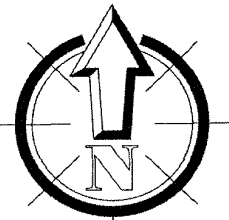
RAPID CITY, PENNINGTON COUNTY, SOUTH DAKOTA.



SHORT COURSE TABLE

L1	N75°43'54\"E	40.56'
L2	N14°16'06\"W	33.66'
L3	S75°43'54\"W	32.04'
L4	S70°48'07\"E	25.86'
L5	N19°11'53\"E	19.99'
L6	N70°48'07\"W	32.85'
L7	N00°03'41\"W	8.91'

EXISTING 100' WIDE PERMANENT DRAINAGE EASEMENT (BOOK 78, PAGES 2491-2493)



SCALE: 1 INCH = 100 FEET



**D.D.I.**

**DREAM DESIGN INTERNATIONAL, INC.**

PROFESSIONAL STRUCTURAL & CIVIL ENGINEERING CONSULTANTS

528 KANSAS CITY STREET, SUITE 4, RAPID CITY, SD 57701

PH. 605-348-0530 FAX. 605-348-0545 EMAIL: engineers@dreamdesigninc.com